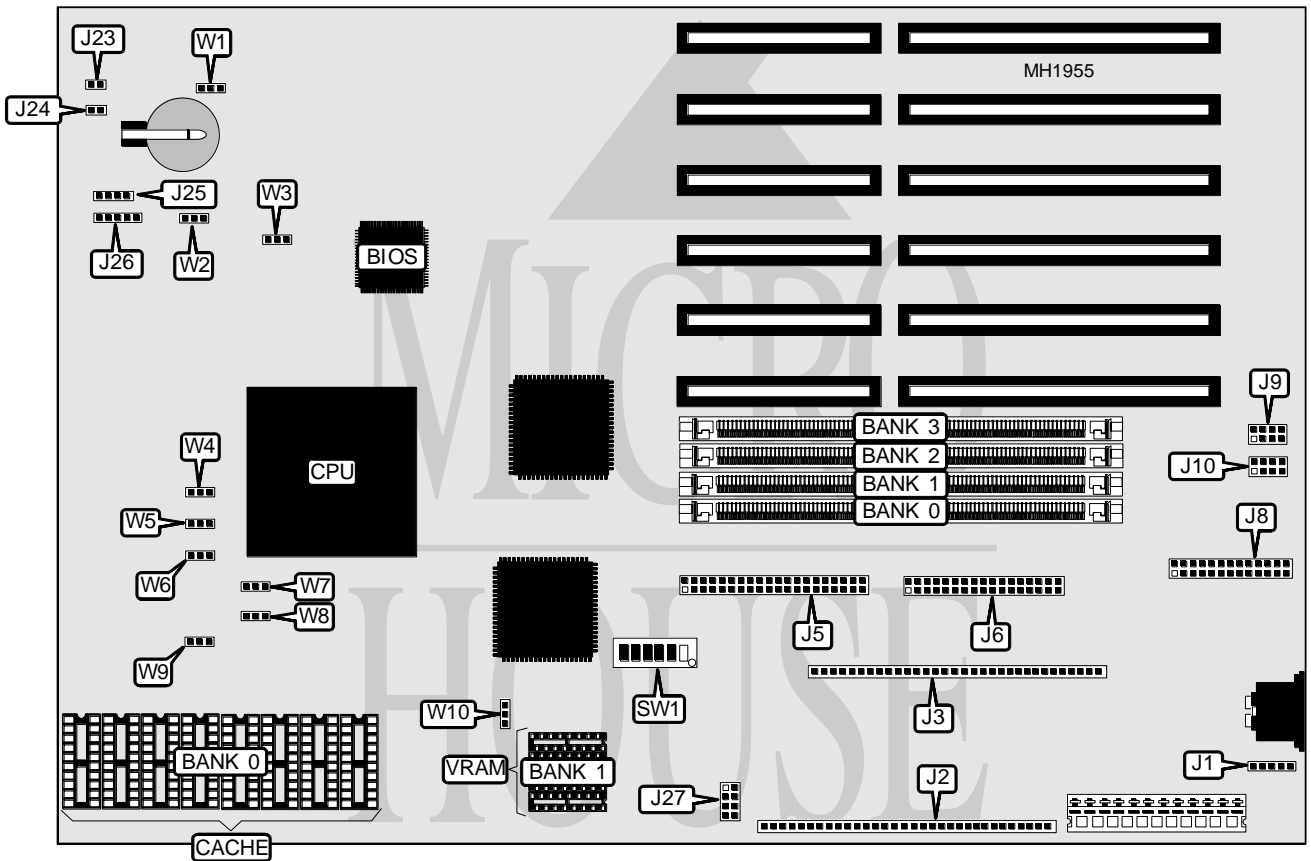


DELL COMPUTER CORPORATION V486DX/XX, XXS REV. 2

Processor	80486SX/80487SX/80486DX/80486DX2
Processor Speed	25/33/50(internal)MHz
Chip Set	OPTI
Max. Onboard DRAM	64MB
Cache	64/256KB
BIOS	AMI
Dimensions	330mm x 218mm
NPU options	None



CONNECTIONS			
Purpose	Location	Purpose	Location
External battery	J1	Serial port 1	J10
Unidentified	J2	Turbo LED	J23
Unidentified	J3	Reset switch	J24
IDE interface	J5	Power LED & keylock	J25
Floppy drive interface	J6	Speaker	J26
Parallel port	J8	VGA interface	J27
Serial port 2	J9		

Continued next page...

DELL COMPUTER CORPORATION

V486DX/XX REV. 2

... continued from previous page.

USER CONFIGURABLE SETTINGS		
Function	Jumper	Position
í Monitor type select color	W1	pins 1 & 2 closed
Monitor type select monochrome	W1	pins 2 & 3 closed
í CMOS memory normal operation	W2	pins 1 & 2 closed
CMOS memory clear	W2	pins 2 & 3 closed
í Factory configured - do not alter	W3	pins 2 & 3 closed
í Onboard VGA enabled	W10	pins 1 & 2 closed
Onboard VGA disabled	W10	pins 2 & 3 closed

DRAM CONFIGURATION				
Size	Bank 0	Bank 1	Bank 2	Bank 3
4MB	(1) 1M x 36	NONE	NONE	NONE
8MB	(1) 1M x 36	(1) 1M x 36	NONE	NONE
12MB	(1) 1M x 36	(1) 1M x 36	(1) 1M x 36	NONE
16MB	(1) 1M x 36	(1) 1M x 36	(1) 1M x 36	(1) 1M x 36
16MB	(1) 4M x 36	NONE	NONE	NONE
20MB	(1) 4M x 36	(1) 1M x 36	NONE	NONE
24MB	(1) 4M x 36	(1) 1M x 36	(1) 1M x 36	NONE
28MB	(1) 4M x 36	(1) 1M x 36	(1) 1M x 36	(1) 1M x 36
32MB	(1) 4M x 36	(1) 4M x 36	NONE	NONE
36MB	(1) 4M x 36	(1) 4M x 36	(1) 1M x 36	NONE
40MB	(1) 4M x 36	(1) 4M x 36	(1) 1M x 36	(1) 1M x 36
48MB	(1) 4M x 36	(1) 4M x 36	(1) 4M x 36	NONE
52MB	(1) 4M x 36	(1) 4M x 36	(1) 4M x 36	(1) 1M x 36
64MB	(1) 4M x 36	(1) 4M x 36	(1) 4M x 36	(1) 4M x 36

CACHE CONFIGURATION	
Size	Bank 0
64KB	(8) 16K x 4
256KB	(8) 32K x 8

CACHE JUMPER CONFIGURATION			
Size	W4	W5	W9
0KB	Open	Open	Open
64KB	pins 2 & 3 closed	pins 2 & 3 closed	pins 2 & 3 closed
256KB	pins 1 & 2 closed	pins 1 & 2 closed	pins 1 & 2 closed

CPU FREQUENCY SELECT			
CPU type	W6	W7	W8
80486SX	pins 2 & 3 closed	pins 2 & 3 closed	Open
80487SX	pins 1 & 2 closed	pins 1 & 2 closed	pins 1 & 2 closed
80486DX	pins 1 & 2 closed	pins 1 & 2 closed	pins 2 & 3 closed
80486DX2	pins 1 & 2 closed	pins 1 & 2 closed	pins 2 & 3 closed

Continued next page...

DELL COMPUTER CORPORATION

V486DX/XX REV. 2

... continued from previous page.

VIDEO RAM CONFIGURATION		
Size	Bank 0	Bank 1
512KB	(4) 256KB x 4	NONE
1MB	(4) 256KB x 4	(4) 256KB x 4
Note: Bank 0 is factory installed and is not configurable.		

VIDEO RAM JUMPER CONFIGURATION	
Size	SW1/6
512KB	On
1MB	Off

MONITOR REFRESH RATE (800 x 600)		
Rate	SW1/1	SW1/2
56Hz	Off	Off
60Hz	Off	On
72Hz	On	Off
56Hz	On	On

MONITOR REFRESH RATE (1024 x 768)		
Rate	SW1/3	SW1/4
Interlaced	Off	Off
60Hz (noninterlaced)	Off	On
70Hz (noninterlaced)	On	Off
72Hz (noninterlaced)	On	On

STANDARD VGA MODES	
Mode	SW1/5
40Hz horizontal, 75/80Hz vertical	On
31.5Hz horizontal, 60/70Hz vertical	Off