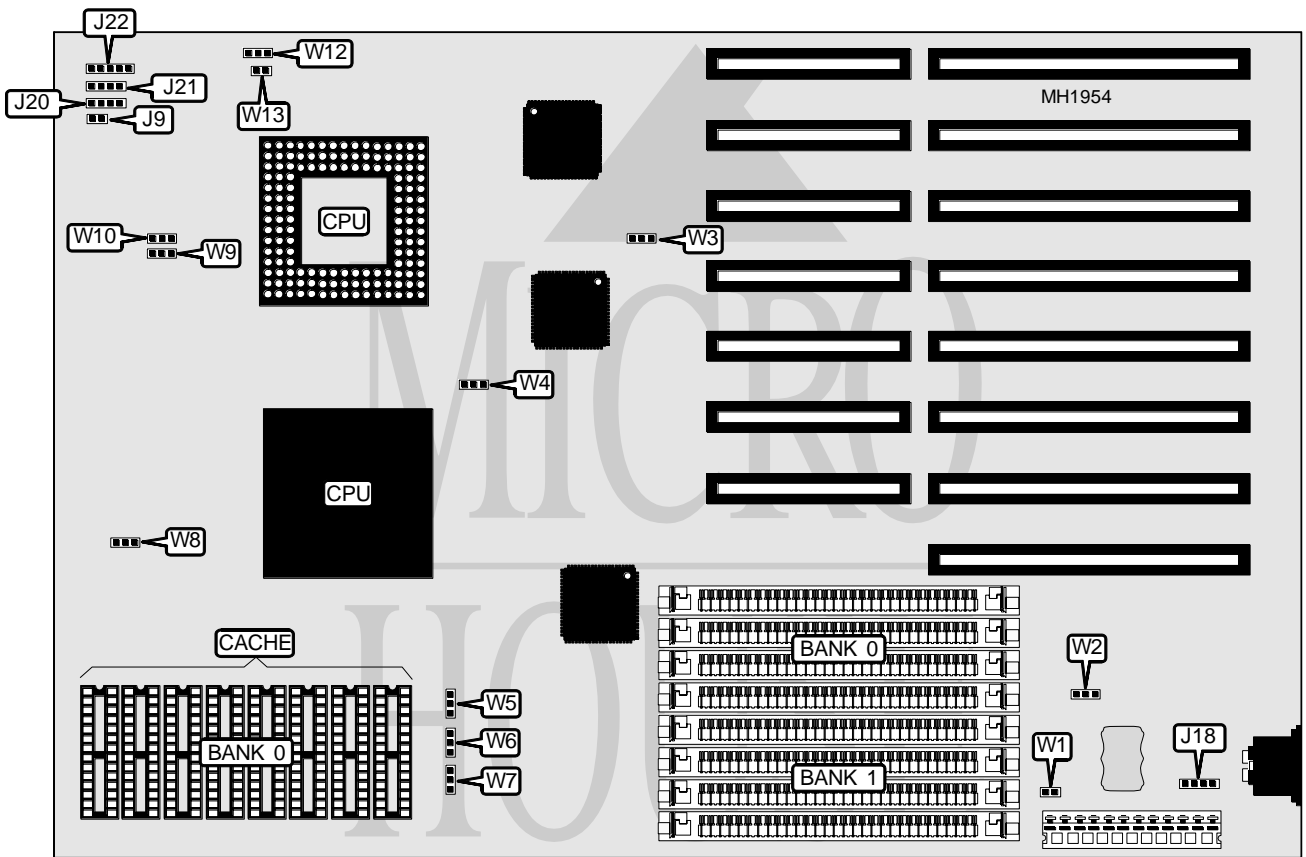


DELL COMPUTER CORPORATION SYSTEM V486/XX REV. 1

Processor 80486SX/80486DX/80486DX2/Overdrive
Processor Speed 25/33/50(internal)/66(internal)MHz
Chip Set Opti
Max. Onboard DRAM 32MB
Cache 64/256KB
BIOS AMI
Dimensions 330mm x 218mm
NPU Options None



CONNECTIONS			
Purpose	Location	Purpose	Location
Turbo LED	J9	Speaker	J21
External battery	J18	Power LED and keylock	J22
Turbo Switch	J20		

Continued next page...

DELL COMPUTER CORPORATION SYSTEM V486/XX REV. 1

... continued from previous page.

USER CONFIGURABLE SETTINGS		
Function	Jumper	Position
í Battery type select - internal	W1	Closed
Battery type select - external	W1	Open
í CMOS memory normal operation	W2	pins 1 & 2 closed
CMOS memory clear	W2	pins 2 & 3 closed
í Factory configured - do not alter	W3	pins 2 & 3 closed
í Factory configured - do not alter	W4	pins 2 & 3 closed
í Monitor type select color	W12	pins 1 & 2 closed
Monitor type select monochrome	W12	pins 2 & 3 closed
í Factory configured - do not alter	W13	Open

DRAM CONFIGURATION		
Size	Bank 0	Bank 1
4MB	(4) 1M x 9	NONE
8MB	(4) 1M x 9	(4) 1M x 9
16MB	(4) 4M x 9	NONE
20MB	(4) 4M x 9	(4) 1M x 9
32MB	(4) 4M x 9	(4) 4M x 9

CACHE CONFIGURATION	
Size	Bank 0
64KB	(8) 16K x 4
256KB	(8) 32K x 8

CACHE JUMPER CONFIGURATION			
Size	W8	W9	W10
0KB	Open	Open	Open
64KB	pins 2 & 3 closed	pins 2 & 3 closed	pins 2 & 3 closed
256KB	pins 1 & 2 closed	pins 1 & 2 closed	pins 1 & 2 closed

CPU TYPE SELECT			
CPU type	W5	W6	W7
486SX	pins 2 & 3 closed	pins 2 & 3 closed	Open
487SX	pins 1 & 2 closed	pins 1 & 2 closed	pins 1 & 2 closed
486DX	pins 1 & 2 closed	pins 1 & 2 closed	pins 2 & 3 closed
486DX2	pins 1 & 2 closed	pins 1 & 2 closed	pins 2 & 3 closed
Overdrive	pins 1 & 2 closed	pins 1 & 2 closed	pins 1 & 2 closed