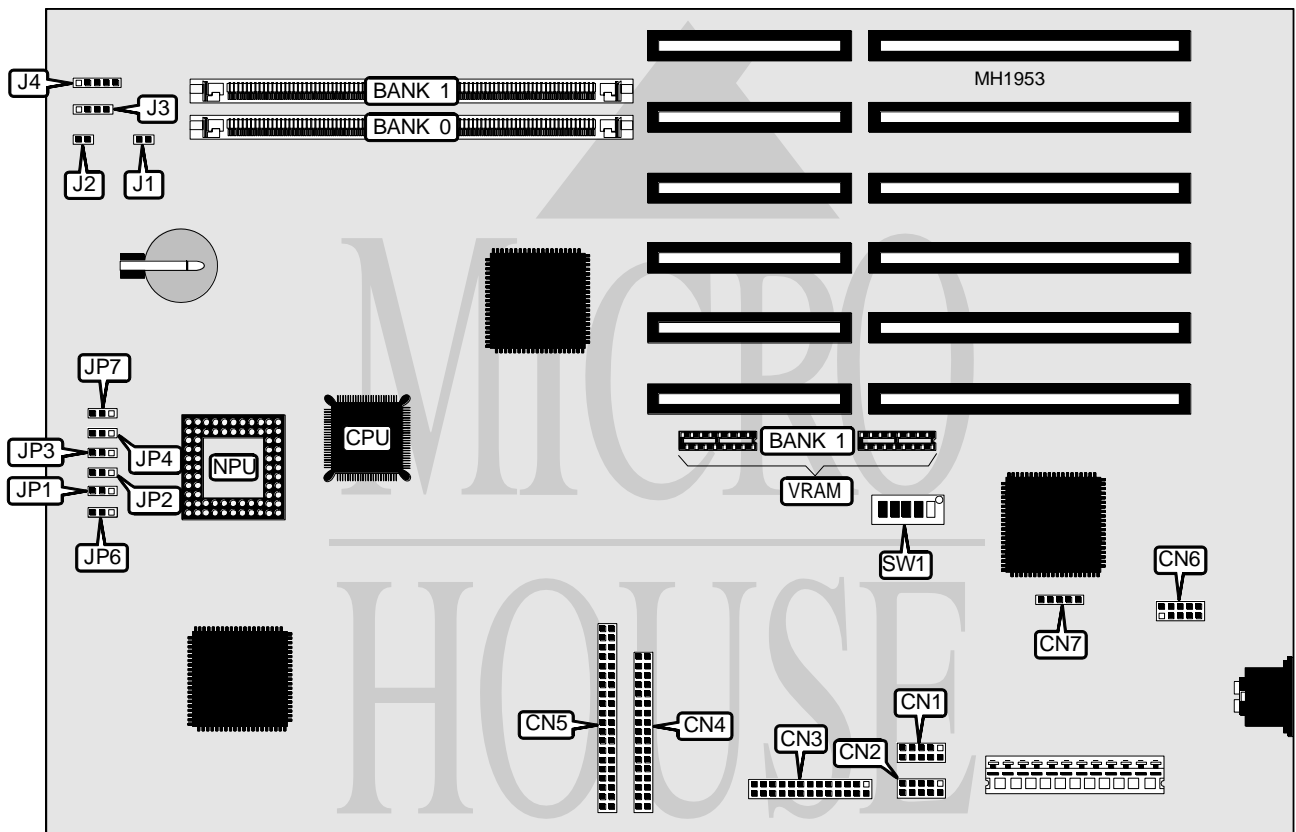


DELL COMPUTER CORPORATION SYSTEM V386SX/XX REV. 2

Processor	80386SX
Processor Speed	16/25MHz
Chip Set	VLSI
Max. Onboard DRAM	16MB
Cache	None
BIOS	AMI
Dimensions	330mm x 218mm
I/O Options	Floppy drive interface, IDE interface, video interface, parallel port, PS/2 mouse port, serial ports (2), Video interface
NPU Options	80387SX



CONNECTIONS			
Purpose	Location	Purpose	Location
IDE interface LED	J1	Parallel port	CN3
Reset switch	J2	Floppy drive interface	CN4
Speaker	J3	IDE interface	CN5
Power LED & keylock	J4	Video interface	CN6
Serial port 1	CN1	Mouse interface	CN7
Serial port 2	CN2		

Continued next page...

DELL COMPUTER CORPORATION SYSTEM V386SX/XX REV. 2

... continued from previous page.

USER CONFIGURABLE SETTINGS		
Function	Jumper/Switch	Position
í VGA IRQ generation disabled	JP1	pins 1 & 2 closed
VGA IRQ generation enabled	JP1	pins 2 & 3 closed
í On board VGA enabled	JP2	pins 2 & 3 closed
On board VGA disabled	JP2	pins 1 & 2 closed
í Single IDE drive enabled	JP3	pins 1 & 2 closed
Dual IDE drive enabled	JP3	pins 2 & 3 closed
í Pipeline mode enabled	JP4	pins 2 & 3 closed
Pipeline mode disabled	JP4	pins 1 & 2 closed
í Monitor type select color	JP6	pins 1 & 2 closed
Monitor type select monochrome	JP6	pins 2 & 3 closed
CMOS memory normal operation	JP7	pins 2 & 3 closed
í CMOS memory clear	JP7	pins 1 & 2 closed
Old style Multisync monitor enabled	SW1/1	On
All other monitors enabled	SW1/1	Off
PS/2 style VGA installed	SW1/2	On
AT style VGA installed	SW1/2	Off
1024 x 768 interlaced enabled	SW1/5	On
1024 x 768 non interlaced enabled	SW1/5	Off

DRAM CONFIGURATION		
Size	Bank 0	Bank 1
1MB	(1) 256K x 36	NONE
2MB	(1) 256K x 36	(1) 256K x 36
4MB	(1) 1M x 36	NONE
5MB	(1) 1M x 36	(1) 256K x 36
8MB	(1) 1M x 36	(1) 1M x 36
16MB	(1) 4M x 36	NONE

VRAM CONFIGURATION		
Size	Bank 0	Bank 1
256KB	(2) 256K x 4	NONE
512KB	(2) 256K x 4	(2) 256K x 4

Note: Bank 0 is factory installed and is not configurable.

VIDEO REFRESH RATES (800 x 600)			
Refresh rate	Colors	SW1/3	SW1/4
56Hz	16	On	On
56Hz	256	On	Off
56Hz	256	On	On
60Hz	16	Off	On
60Hz	256	Off	On
60Hz	256	Off	Off
72Hz	16	Off	Off
72Hz	16	On	Off