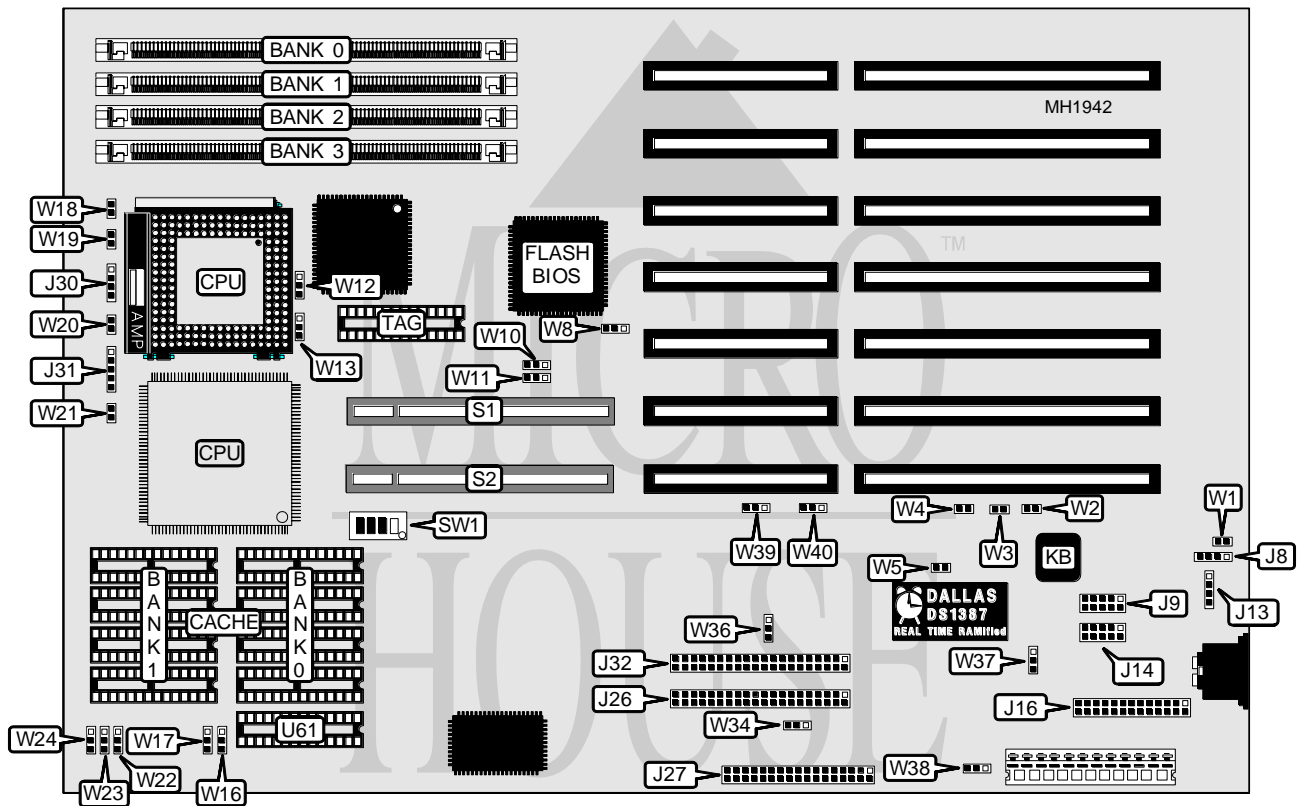


MICRONICS COMPUTERS, INC.

JX30GC VL-BUS

Processor	80486SX/80486DX/80486DX2/80486DX4/Pentium Overdrive
Processor Speed	25/33/50(internal)/66(internal)/100(internal)MHz
Chip Set	Micronics
Max. Onboard DRAM	64MB
Cache	64/128/256KB
BIOS	Phoenix
Dimensions	330mm x 218mm
I/O Options	32-bit VESA local bus slots (2), floppy drive interface, IDE interface (2), parallel port, serial ports (2)
NPU Options	None



CONNECTIONS			
Purpose	Location	Purpose	Location
External battery	J8	Power LED & keylock	J31
Serial port 2	J9	IDE interface - secondary	J32
External keyboard	J13	32-bit VESA Local bus slots	S1 & S2
Serial port 1	J14	Turbo LED	W18
Parallel port	J16	Turbo switch	W19
IDE interface - primary	J26	Reset switch	W20
Floppy drive interface	J27	IDE interface LED	W21
Speaker	J30		

Continued next page...

MICRONICS COMPUTERS, INC.

JX30GC VL-BUS

... continued from previous page.

USER CONFIGURABLE SETTINGS		
Function	Jumper/Switch	Position
í Factory configured - do not alter	SW1/3	Off
í Factory configured - do not alter	SW1/4	Off
í Real time clock installed	W1	Closed
Real time clock not installed	W1	Open
í Monitor type select color	W2	Closed
Monitor type select monochrome	W2	Open
í Factory configured - do not alter	W3	Open
í Parity enabled	W4	Closed
Parity disabled	W4	Open
í CMOS memory normal operation	W5	Closed
CMOS memory clear	W5	Open
í Normal operation	W8	pins 2 & 3 closed
BIOS recovery enabled	W8	pins 1 & 2 closed
í Primary IDE (J26) enabled	W34	pins 1 & 2 closed
Primary IDE (J26) disabled	W34	pins 2 & 3 closed
í Parallel port select IRQ7	W36	pins 1 & 2 closed
Parallel port select IRQ5	W36	pins 2 & 3 closed

CACHE CONFIGURATION				
Size	Bank 0	Bank 1	TAG	TAG/U61
64KB	(4) 8K x 8	(4) 8K x 8	(1) 8K x 8	(1) 8K x 8
128KB	(4) 32K x 8	NONE	(1) 32K x 8	(1) 32K x 8
256KB	(4) 32K x 8	(4) 32K x 8	(1) 32K x 8	(1) 32K x 8

Note: If Write-Through caching is not being used, the chip at U61 is not installed.

CACHE JUMPER CONFIGURATION					
Size	W10	W11	W22	W23	W24
64KB	1 & 2	1 & 2	2 & 3	2 & 3	1 & 2
128KB	1 & 2	2 & 3	1 & 2	1 & 2	2 & 3
256KB	2 & 3	2 & 3	2 & 3	2 & 3	2 & 3

Note: Pins designated should be in the closed position.

CACHING METHOD CONFIGURATION			
Method	Size	W16	W17
Write-Through	All	Open	Open
Write-Back	64KB	pins 1 & 2 closed	pins 1 & 2 closed
Write-Back	128KB	pins 1 & 2 closed	pins 2 & 3 closed
Write-Back	256KB	pins 2 & 3 closed	pins 2 & 3 closed

Continued next page...

MICRONICS COMPUTERS, INC.

JX30GC VL-BUS

... continued from previous page.

DRAM CONFIGURATION				
Size	Bank 0	Bank 1	Bank 2	Bank 3
1MB	(1) 256K x 36	NONE	NONE	NONE
2MB	(1) 256K x 36	(1) 256K x 36	NONE	NONE
4MB	(1) 1M x 36	NONE	NONE	NONE
6MB	(1) 256K x 36	(1) 256K x 36	(1) 1M x 36	NONE
8MB	(1) 1M x 36	(1) 1M x 36	NONE	NONE
10MB	(1) 256K x 36	(1) 256K x 36	(1) 1M x 36	(1) 1M x 36
12MB	(1) 1M x 36	(1) 1M x 36	(1) 1M x 36	NONE
16MB	(1) 1M x 36	(1) 1M x 36	(1) 1M x 36	(1) 1M x 36
16MB	(1) 4M x 36	NONE	NONE	NONE
18MB	(1) 256K x 36	(1) 256K x 36	(1) 4M x 36	NONE
20MB	(1) 1M x 36	(1) 4M x 36	NONE	NONE
24MB	(1) 1M x 36	(1) 1M x 36	(1) 4M x 36	NONE
32MB	(1) 4M x 36	(1) 4M x 36	NONE	NONE
36MB	(1) 1M x 36	(1) 4M x 36	(1) 4M x 36	NONE
40MB	(1) 1M x 36	(1) 1M x 36	(1) 4M x 36	(1) 4M x 36
48MB	(1) 4M x 36	(1) 4M x 36	(1) 4M x 36	NONE
64MB	(1) 4M x 36	(1) 4M x 36	(1) 4M x 36	(1) 4M x 36

CPU TYPE CONFIGURATION		
Type	W12	W13
80486SX	pins 1 & 2 closed	pins 2 & 3 closed
80486DX	pins 2 & 3 closed	pins 2 & 3 closed
804896DX2	pins 2 & 3 closed	pins 2 & 3 closed
Pentium Overdrive	pins 2 & 3 closed	pins 1 & 2 closed

CPU SPEED CONFIGURATION		
Speed	SW1/1	SW1/2
25MHz	Off	On
33MHz	On	On
50iMHz	Off	On
66iMHz	On	On
75iMHz	Off	On
100iMHz	On	On

PARALLEL PORT CHANNEL CONFIGURATION		
Channel	W37	W38
í NONE	Open	Open
DMA1	pins 1 & 2 closed	pins 1 & 2 closed
DMA3	pins 2 & 3 closed	pins 2 & 3 closed

SECONDARY IDE CHANNEL CONFIGURATION		
Channel	W39	W40
í NONE	Open	Open
DMA6	pins 1 & 2 closed	pins 1 & 2 closed
DMA7	pins 2 & 3 closed	pins 2 & 3 closed