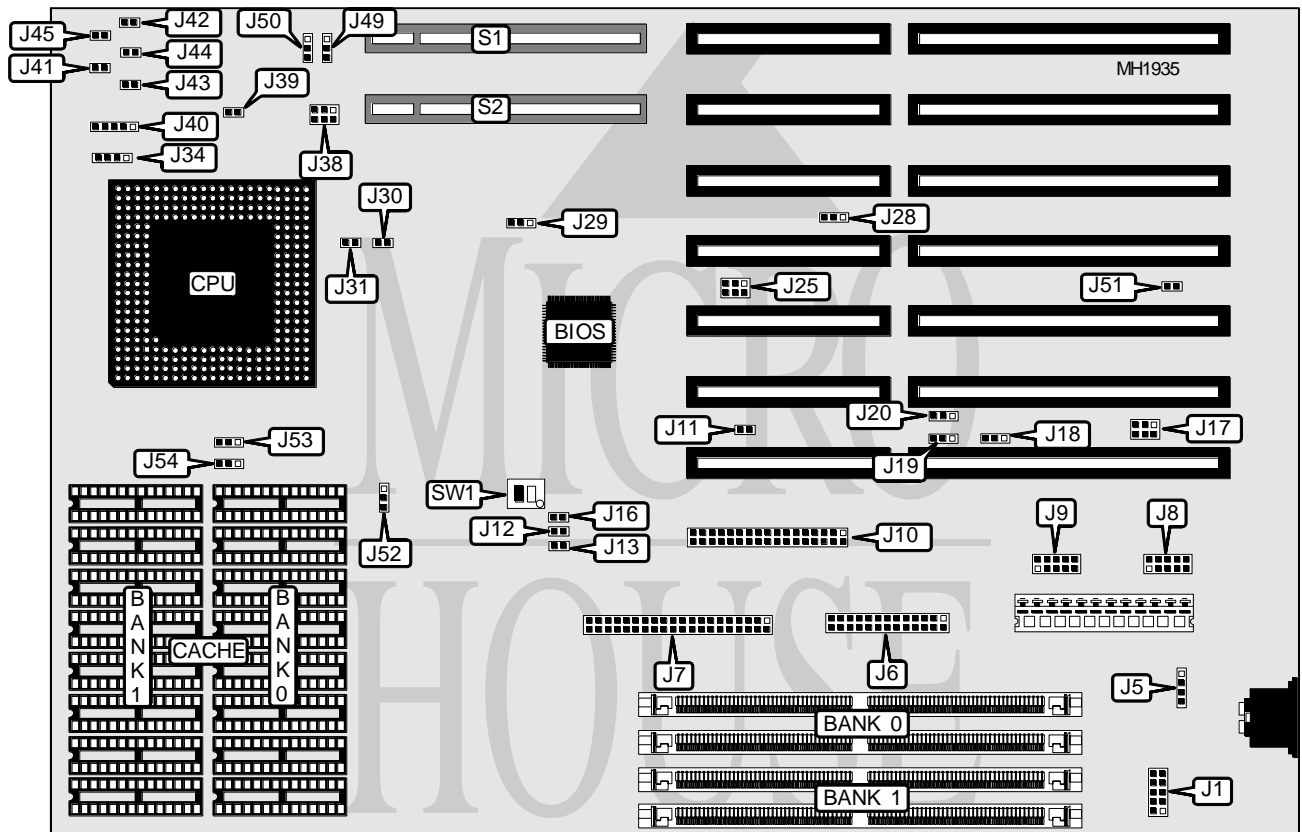


# AMERICAN MEGATRENDS, INC. EXCALIBUR VLB PENTIUM

<b>Processor</b>	Pentium
<b>Processor Speed</b>	60MHz
<b>Chip Set</b>	OPTi PTMWBA-V
<b>Max. Onboard DRAM</b>	128MB
<b>Cache</b>	128/256/512KB
<b>BIOS</b>	AMI
<b>Dimensions</b>	330mm x 218mm
<b>I/O Options</b>	32-bit VESA local bus slots(2), floppy drive interface, IDE interface, parallel port, PS/2 mouse port, serial ports (2)
<b>NPU Options</b>	None



CONNECTIONS			
Purpose	Location	Purpose	Location
PS/2 mouse port	J1	Keylock	J40
External battery	J5	IDE interface LED	J41
Parallel port	J6	Turbo LED	J42
IDE interface	J7	Reset switch	J43
Serial port 1	J8	Turbo switch	J45
Serial port 2	J9	32-bit VESA local bus slot	S1
Floppy drive interface	J10	32-bit VESA local bus slot	S2
Speaker	J34		

Continued next page...

# AMERICAN MEGATRENDS, INC. EXCALIBUR VLB PENTIUM

... continued from previous page.

USER CONFIGURABLE SETTINGS		
Function	Jumper/Switch	Position
í Factory configured - do not alter	J11	Closed
í Factory configured - do not alter	J12	Open
í Factory configured - do not alter	J13	Open
í Factory configured - do not alter	J16	Open
í Parallel port set at IRQ7	J18	pins 1 & 2 closed
Parallel port set at IRQ5	J18	pins 2 & 3 closed
í Serial port 1 set at IRQ4	J19	pins 1 & 2 closed
Serial port 1 set at IRQ3	J19	pins 2 & 3 closed
í Serial port 2 set at IRQ3	J20	pins 1 & 2 closed
Serial port 2 set at IRQ4	J20	pins 2 & 3 closed
í Enables IRQ12 from onboard mouse	J28	pins 1 & 2 closed
Enables IRQ12 from bus mouse	J28	pins 2 & 3 closed
í CMOS memory normal operation	J29	pins 1 & 2 closed
CMOS memory clear (RAM drain)	J29	pins 2 & 3 closed
í Factory configured do not alter	J38	pins 1, 2, 5, 6 closed
í Factory configured do not alter	J39	Open
í Factory configured - do not alter	J44	N/A
í Factory configured - do not alter	J49	Open
í Factory configured - do not alter	J50	Closed
í Flash ROM programming disabled	J51	Open
Flash ROM programming enabled	J51	Closed
í Factory configured - do not alter	SW1/1	Off
í Monitor type select color	SW1/2	On
Monitor type select monochrome	SW1/2	Off

EXTENDED PARALLEL PORT DMA SELECT		
DMA Channel	J17	J25
None (Factory setting)	Open	Open
DRQ0	pins 1 & 2 closed	pins 1 & 2 closed
DRQ1	pins 3 & 4 closed	pins 3 & 4 closed
DRQ3	pins 5 & 6 closed	pins 5 & 6 closed

Continued next page...

# AMERICAN MEGATRENDS, INC.

## EXCALIBUR VLB PENTIUM

... continued from previous page.

DRAM CONFIGURATION		
Size	Bank 0	Bank 1
2MB	(1) 256K x 36	(1) 256K x 36
4MB	(1) 512K x 36	(1) 512K x 36
8MB	(1) 1MB x 36	(1) 1MB x 36
16MB	(1) 2MB x 36	(1) 2MB x 36
32MB	(1) 4MB x 36	(1) 4MB x 36
128MB	(1) 8MB x 36	(1) 8MB x 36

Note: The exact location of Bank 0 and Bank 1 are unknown.

CACHE MEMORY CONFIGURATION					
Size	J30	J31	J52	J53	J54
128K	Open	Open	pins 1 & 2	pins 1 & 2	pins 1 & 2
256K	Open	Closed	pins 2 & 3	pins 2 & 3	pins 2 & 3
512K	Closed	Closed	pins 1 & 2	pins 1 & 2	pins 1 & 2

Note: Pins designated should be in the closed position.