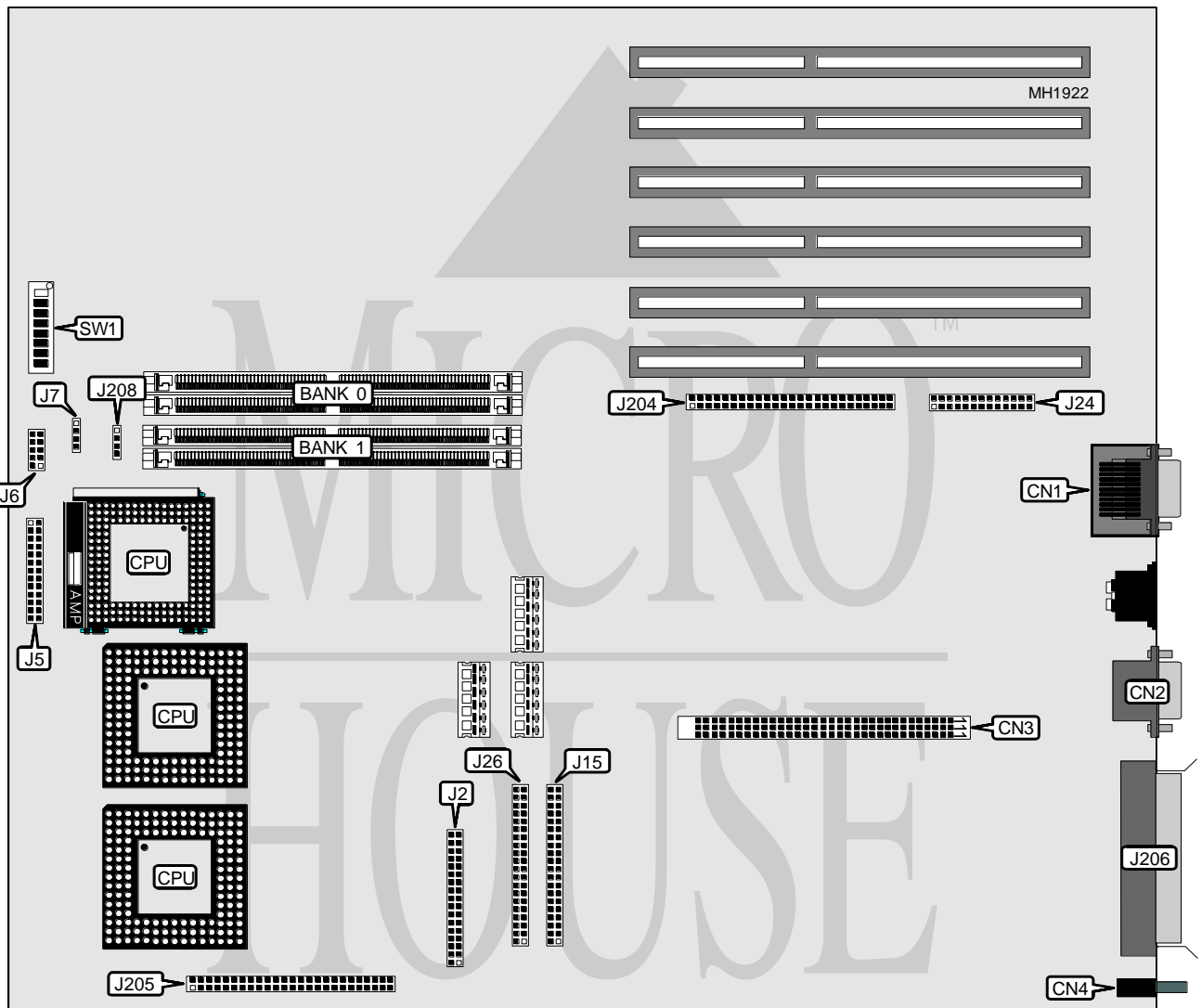


TULIP COMPUTERS

TR 486 EISA (VER. 1 TC32)

Processor	80486SX/80486DX2
Processor Speed	33/50(internal)/66(internal)MHz
Chip Set	Texas Instruments
Max. Onboard DRAM	132MB
Cache	None
BIOS	Phoenix
Dimensions	355mm x 304mm
I/O Options	Floppy drive interface, IDE interface (2), internal video board connector, parallel port, PS/2 mouse port, SCSI ports (3), serial ports (2)
NPU Options	None



Continued next page...

TULIP COMPUTERS

TR 486 EISA (VER. 1 TC32)

... continued from previous page.

CONNECTIONS			
Purpose	Location	Purpose	Location
Serial port 1 & 2	CN1	IDE interface LED/SCSI LED	J7
VGA port	CN2	Primary IDE interface	J15
Internal video board connector	CN3	Parallel port	J24
UPS connector	CN4	Secondary IDE interface	J26
Floppy drive interface	J2	Internal SCSI connector/Channel B	J204
LCD connector	J5	Internal SCSI connector/Channel A	J205
Battery/loudspeaker/power-on LED	J6	External SCSI connector	J206

USER CONFIGURABLE SETTINGS		
Function	Jumper/Switch	Position
í Factory configured - do not alter	J208	N/A
í Factory configured - do not alter	SW1/5	Off
í Factory configured - do not alter	SW1/6	Off
í Factory configured - do not alter	SW1/7	Off
í Factory configured - do not alter	SW1/8	Off

DRAM CONFIGURATION						
Size	Bank 0	Bank 1	SW1/1	SW1/2	SW1/3	SW1/4
4MB	NONE	NONE	On	On	On	On
12MB	(2) 4M x 36	NONE	Off	On	On	On
20MB	(2) 4M x 36	(2) 4M x 36	On	Off	On	On
28MB	(2) 4M x 36	(2) 8M x 36	Off	Off	On	On
36MB	(2) 8M x 36	(2) 8M x 36	On	Off	Off	On
44MB	(2) 4M x 36	(2) 16M x 36	On	On	Off	On
68MB	(2) 16M x 36	(2) 16M x 36	Off	Off	Off	On
76MB	(2) 4M x 36	(2) 32M x 36	Off	On	Off	On
100MB	(2) 16M x 36	(2) 32M x 36	On	On	On	Off
132MB	(2) 32M x 36	(2) 32M x 36	Off	On	On	Off