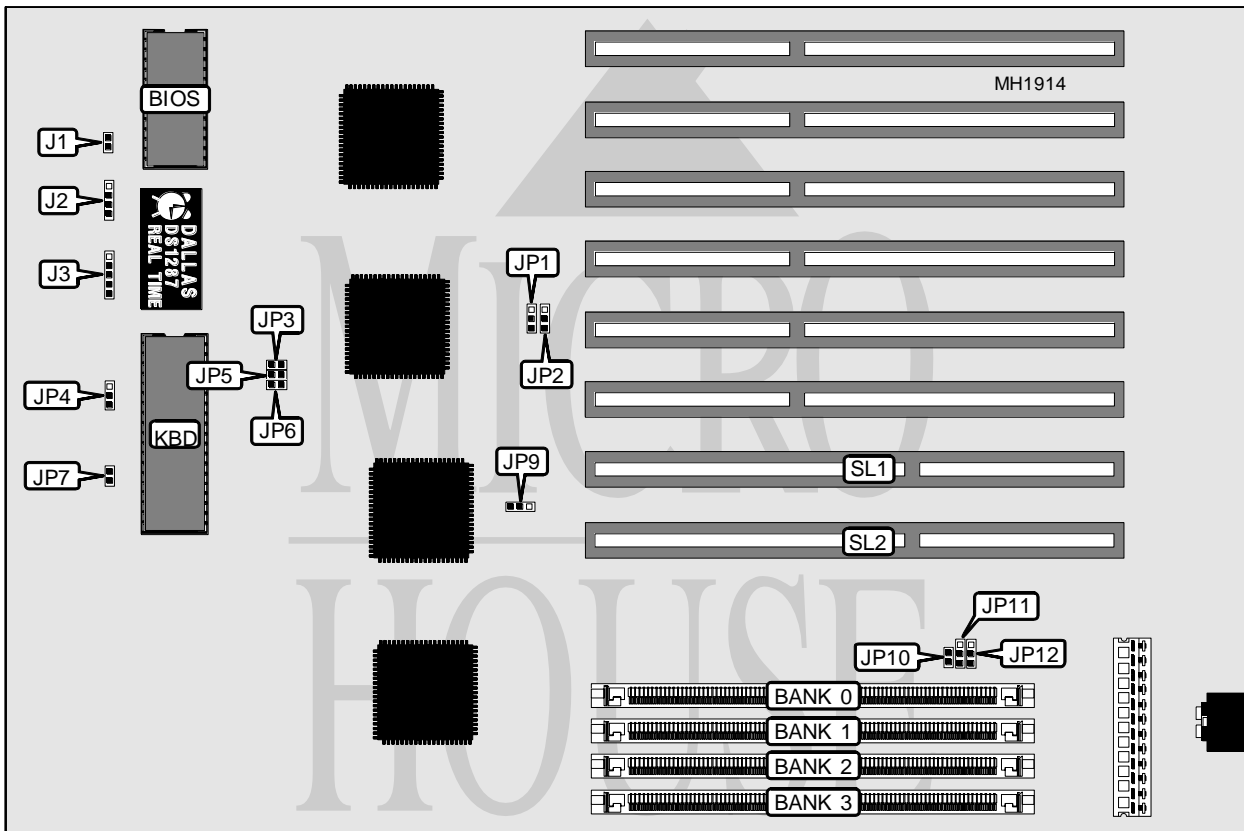


TECHNOLOGY POWER ENTERPRISES, INC.

TP486 SONIC EISA

Processor	80486SX/80486DX/ODP486SX/80486DX2
Processor Speed	20/25/33/50(internal)/50/66(internal)MHz
Chip Set	Unidentified
Max. Onboard DRAM	64MB
Cache	64/256KB
BIOS	Unidentified
Dimensions	330mm x 218mm
I/O Options	32-bit proprietary local bus slots(2)
NPU Options	4167



CONNECTIONS			
Purpose	Location	Purpose	Location
Reset switch	J1	32-bit proprietary local bus slot(video)	SL1
Speaker	J2	32-bit proprietary local bus slot(CPU)	SL2
Power LED & keylock	J3		

Continued on next page . . .

TECHNOLOGY POWER ENTERPRISES, INC.

TP486 SONIC EISA

... continued from previous page

USER CONFIGURABLE SETTINGS		
Function	Jumper	Position
í Monitor type select color	JP7	Closed
Monitor type select monochrome	JP7	Open
í TP Sonic Mirage Local bus graphics card not installed	JP9	pins 1 & 2 closed
TP Sonic Mirage Local bus graphics card installed	JP9	pins 2 & 3 closed
í Factory configured-do not alter	JP13	Open
Note: The location of JP13 is unidentified.		

DRAM CONFIGURATION				
Size	Bank 0	Bank 1	Bank 2	Bank 3
4MB	(1) 1M x 36	NONE	NONE	NONE
8MB	(1) 1M x 36	(1) 1M x 36	NONE	NONE
12MB	(1) 1M x 36	(1) 1M x 36	(1) 1M x 36	NONE
16MB	(1) 1M x 36	(1) 1M x 36	(1) 1M x 36	(1) 1M x 36
16MB	(1) 4M x 36	NONE	NONE	NONE
20MB	(1) 1M x 36	(1) 4M x 36	NONE	NONE
24MB	(1) 1M x 36	(1) 1M x 36	(1) 4M x 36	NONE
24MB	(1) 1M x 36	(1) 4M x 36	(1) 1M x 36	NONE
28MB	(1) 1M x 36	(1) 1M x 36	(1) 4M x 36	(1) 1M x 36
28MB	(1) 1M x 36	(1) 4M x 36	(1) 1M x 36	(1) 1M x 36
32MB	(1) 4M x 36	(1) 4M x 36	NONE	NONE
36MB	(1) 1M x 36	(1) 4M x 36	(1) 4M x 36	NONE
36MB	(1) 4M x 36	(1) 4M x 36	(1) 1M x 36	NONE
40MB	(1) 1M x 36	(1) 1M x 36	(1) 4M x 36	(1) 4M x 36
40MB	(1) 4M x 36	(1) 4M x 36	(1) 4M x 36	(1) 4M x 36
40MB	(1) 4M x 36	(1) 4M x 36	(1) 1M x 36	(1) 1M x 36
48MB	(1) 4M x 36	(1) 4M x 36	(1) 4M x 36	
52MB	(1) 1M x 36	(1) 4M x 36	(1) 4M x 36	(1) 4M x 36
52MB	(1) 4M x 36	(1) 4M x 36	(1) 4M x 36	(1) 1M x 36
64MB	(1) 4M x 36	(1) 4M x 36	(1) 4M x 36	(1) 4M x 36

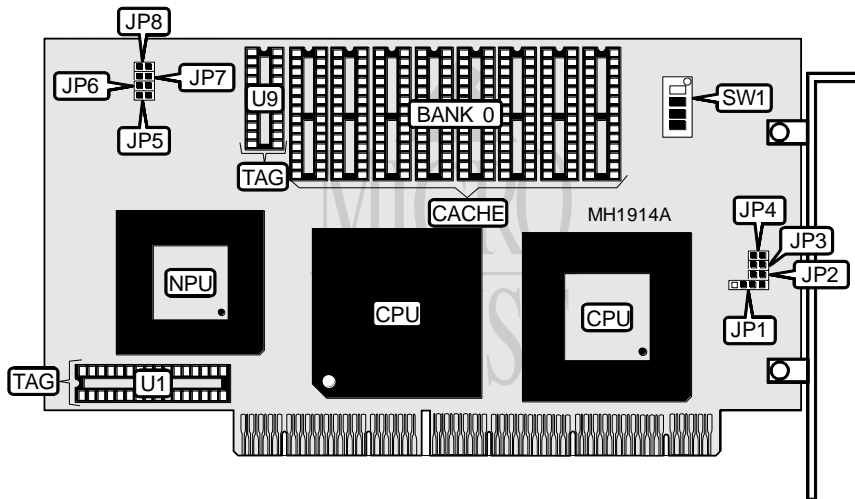
CPU TYPE CONFIGURATION							
Type	JP1	JP2	JP3	JP5	JP6	JP11	JP12
386 EISA	1 & 2	1 & 2	Closed	Open	Open	1 & 2	1 & 2
486 EISA	2 & 3	2 & 3	Open	Closed	Closed	2 & 3	2 & 3
Note: Pins designated should be in the closed position.							

Continued on next page ...

TECHNOLOGY POWER ENTERPRISES, INC.
TP486 SONIC EISA

... continued from previous page

CPU SPEED CONFIGURATION			
Speed	JP4	JP8	JP10
20MHz	pins 2 & 3 closed	pins 2 & 3 closed	Closed
25MHz	pins 1 & 2 closed	pins 2 & 3 closed	Open
33MHz	pins 1 & 2 closed	pins 2 & 3 closed	Open
50iMHz	pins 1 & 2 closed	pins 1 & 2 closed	Open
50MHz	pins 1 & 2 closed	pins 1 & 2 closed	Open
66iMHz	pins 1 & 2 closed	pins 2 & 3 closed	Open



CACHE CONFIGURATION			
Size	Bank 0	TAG(U1)	TAG(U9)
64KB	(8) 8K x 8	(1) 8K x 9	(1) 16K x 1
256KB	(8) 32K x 8	(1) 32K x 9	(1) 64K x 1

CACHE JUMPER CONFIGURATION				
Size	JP5	JP6	JP7	JP8
64KB	Open	Open	Open	Open
256KB	Closed	Closed	Closed	Closed

CPU TYPE CONFIGURATION				
Type	SW1/1	SW1/2	SW1/3	SW1/4
DX2	Off	On	Off	On
Overdrive	On	Off	On	Off

Continued on next page...

BUFFALO TECHNOLOGY

TP486 SONIC EISA

... continued from previous page

CPU SPEED CONFIGURATION				
Speed	JP1	JP2	JP3	JP4
20MHz	2 & 3	Open	Open	Open
25MHz SX	2 & 3	Open	Open	Open
25MHz DX	1, 2, 3, & 4	Closed	Open	Open
33MHz	1, 2, 3, & 4	Closed	Open	Closed
50MHz	1, 2, 3, & 4	Closed	Open	Open
50MHz	1, 2, 3, & 4	Closed	Closed	Closed
66MHz	1, 2, 3, & 4	Closed	Open	Closed

Note: Pins designated should be in the closed position.