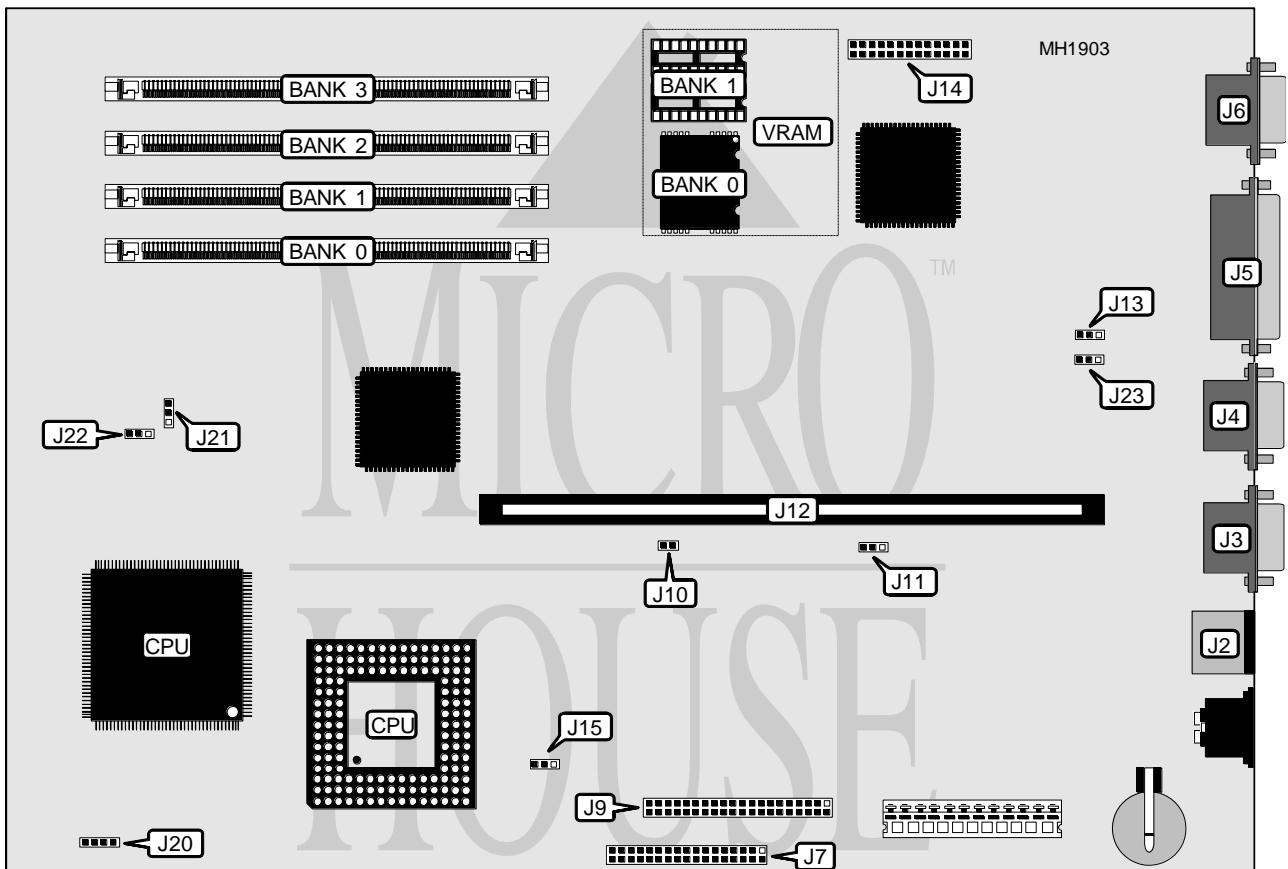


# IBM CORPORATION PS/VALUEPOINT 6381 SX

<b>Processor</b>	80486SX/80486DX/80486DX2
<b>Processor Speed</b>	25/50(internal)MHz
<b>Chip Set</b>	Intel
<b>Max. Onboard DRAM</b>	64MB
<b>Cache</b>	None
<b>BIOS</b>	IBM
<b>Dimensions</b>	330mm x 218mm
<b>I/O Options</b>	32-bit riser card slot, floppy drive interface, hard drive interface, parallel port, PS/2 mouse port, serial ports (2), video port
<b>NPU Options</b>	None



CONNECTIONS			
Purpose	Location	Purpose	Location
PS/2 mouse port	J2	Hard drive interface	J9
Serial port 1	J3	Riser Card	J12
Serial port 2	J4	VESA feature connector	J14
Parallel port	J5	Power LED & hard drive LED	J18
Video port	J6	Speaker	J25
Floppy drive interface	J7		

Continued next page...

# IBM CORPORATION

## PS/VALUEPOINT 6381 SX

... continued from previous page.

USER CONFIGURABLE SETTINGS		
Function	Jumper	Position
í Mouse port disabled	J10	pins 1 & 2 closed
Mouse port enabled	J10	pins 2 & 3 closed
í Flash memory enabled	J11	pins 1 & 2 closed
Flash memory disabled	J11	pins 2 & 3 closed
í Video port enabled	J13	pins 1 & 2 closed
Video port disabled	J13	pins 2 & 3 closed
í Write protect enabled	J15	pins 1 & 2 closed
Write protect disabled	J15	pins 2 & 3 closed
í Speaker enabled	J22	pins 1 & 2 closed
Speaker disabled	J22	pins 2 & 3 closed
í Video interrupt disabled	J23	pins 1 & 2 closed
Video interrupt enabled	J23	pins 2 & 3 closed

DRAM CONFIGURATION				
Size	Bank 0	Bank 1	Bank 2	Bank 3
16MB	(1) 2M x 36	(1) 2M x 36	NONE	NONE
32MB	(1) 2M x 36	(1) 2M x 36	(1) 2M x 36	(1) 2M x 36
32MB	(1) 4M x 36	(1) 4M x 36	NONE	NONE
64MB	(1) 4M x 36	(1) 4M x 36	(1) 4M x 36	(1) 4M x 36
64MB	(1) 8M x 36	(1) 8M x 36	NONE	NONE

VIDEO MEMORY CONFIGURATION		
Size	Bank 0	Bank 1
512KB	(2) 512K x 4	None
1MB	(2) 512K x 4	(2) 512K x 4