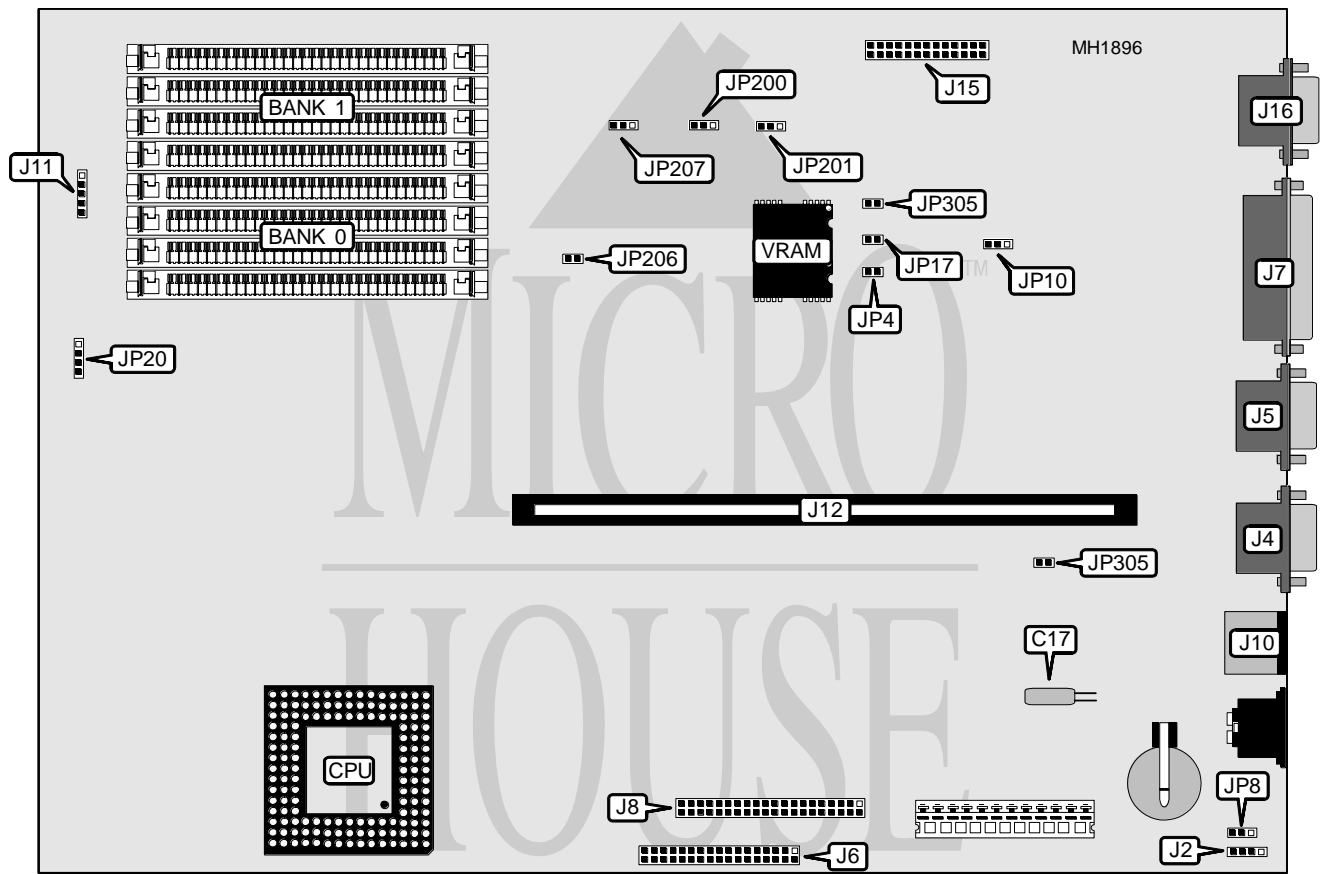


IBM CORPORATION PS/VALUEPOINT 6384 433DX/466DX2

Processor	80486DX/80486DX2
Processor Speed	33/66(internal)MHz
Chip Set	Intel
Max. Onboard DRAM	32MB
Cache	8KB/128KB (location unknown)
BIOS	IBM
Dimensions	330mm x 218mm
I/O Options	32-bit riser card slot, floppy drive interface, hard drive interface, parallel port, PS/2 mouse port, serial ports (2), video port
NPU Options	None



CONNECTIONS			
Purpose	Location	Purpose	Location
External battery	J2	Hard drive LED	J11 pins 4 & 5
Serial port 1	J4	Power on LED	J11 pins 1 & 2
Serial port 2	J5	Riser card slot	J12
Floppy drive interface	J6	VESA feature connector	J15
Parallel port	J7	Video port	J16
Hard drive interface	J8	Power LED	J23
PS/2 mouse port	J10		

Continued next page...

IBM CORPORATION

PS/VALUEPOINT 6384 433DX/466DX2

... continued from previous page.

USER CONFIGURABLE SETTINGS		
Function	Jumper	Position
í Factory configured - do not alter	JP4	Closed
í CMOS memory normal operation	JP8	pins 1 & 2 closed
CMOS memory clear	JP8	pins 2 & 3 closed
í Beeper enabled	JP20	pins 1 & 2 closed
Beeper disabled	JP20	pins 3 & 4 closed
í Mouse port enabled	JP209	Closed
Mouse port disabled	JP209	Open
í IRQ9 enabled	JP305	Closed
IRQ9 disabled	JP305	Open

Note: The capacitor located at C17 must be used in conjunction with JP8 to erase the password.

DRAM CONFIGURATION		
Size	Bank 0	Bank 1
4MB	(4) 1M x 9	None
8MB	(4) 1M x 9	(4) 1M x 9
16MB	(1) 4M x 9	None
32MB	(1) 4M x 9	(1) 4M x 9

CACHE CONFIGURATION				
Size	JP200	JP201	JP206	JP207
í 8KB	pins 1 & 2 closed	pins 1 & 2 closed	pins 1 & 2 closed	pins 1 & 2 closed
128KB	pins 2 & 3 closed	pins 2 & 3 closed	pins 2 & 3 closed	pins 2 & 3 closed

VIDEO CONFIGURATION		
Port	JP10	JP17
í Enabled	pins 2 & 3 closed	Open
Disabled	pins 1 & 2 closed	Closed