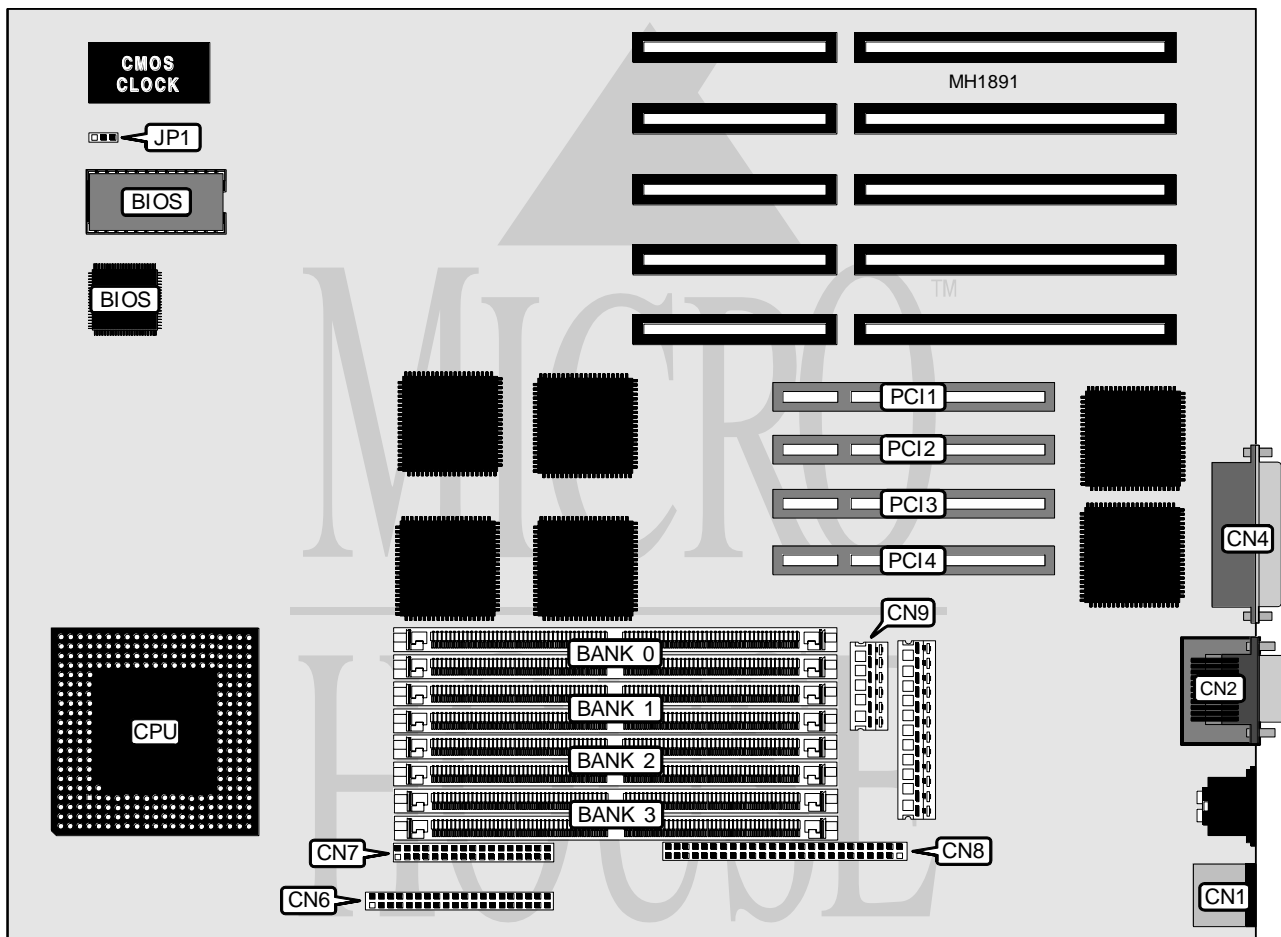


ADVANCED LOGIC RESEARCH, INC. EVOLUTION V ST/PCI

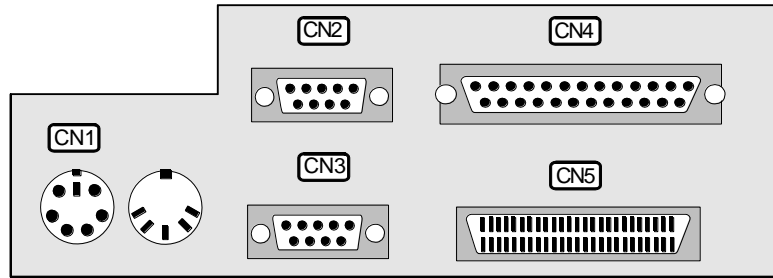
Processor	Pentium
Processor Speed	60MHz
Chip Set	ALR
Max. Onboard DRAM	128MB
Cache	256KB
BIOS	Phoenix
Dimensions	330mm x 218mm
I/O Options	32-bit PCI local bus slots (4), floppy drive interface, IDE interface, parallel port, PS/2 mouse port, SCSI device controller, SCSI port, serial ports (2)
NPU Options	None



Continued next page...

ADVANCED LOGIC RESEARCH, INC. EVOLUTION V ST/PCI

... continued from previous page.



CONNECTIONS			
Purpose	Location	Purpose	Location
PS/2 mouse port	CN1	SCSI device controller	CN8
Serial port 2	CN2	Optional 3.3V power connector	CN9
Serial port 1	CN3	32-bit PCI Local bus slot	PCI1
Parallel port	CN4	32-bit PCI Local bus slot	PCI2
SCSI port	CN5	32-bit PCI Local bus slot	PCI3
IDE interface	CN6	32-bit PCI Local bus slot	PCI4
Floppy drive interface	CN7		

USER CONFIGURABLE SETTINGS		
Function	Jumper	Position
í CMOS memory normal operation	W510	pins 1 & 2 closed
CMOS memory clear	W510	pins 2 & 3 closed

DRAM CONFIGURATION				
Size	Bank 0	Bank 1	Bank 2	Bank 3
2MB	(2) 1M x 36	NONE	NONE	NONE
4MB	(2) 2M x 36	NONE	NONE	NONE
4MB	(2) 1M x 36	(2) 1M x 36	(2) 1M x 36	NONE
6MB	(2) 1M x 36	(2) 2M x 36	NONE	NONE
8MB	(2) 1M x 36	(2) 1M x 36	(2) 1M x 36	(2) 1M x 36
8MB	(2) 2M x 36	(2) 2M x 36	NONE	NONE
8MB	(2) 4M x 36	NONE	NONE	NONE
10MB	(2) 1M x 36	(2) 4M x 36	NONE	NONE
12MB	(2) 2M x 36	(2) 4M x 36	NONE	NONE
12MB	(2) 1M x 36	(2) 4M x 36	NONE	(2) 1M x 36
16MB	(2) 4M x 36	(2) 4M x 36	NONE	NONE
16MB	(2) 8M X 36	NONE	NONE	NONE
18MB	(2) 1M x 36	(2) 8M X 36	NONE	NONE
18MB	(2) 1M x 36	(2) 4M x 36	(2) 4M x 36	NONE
20MB	(2) 2M x 36	(2) 8M X 36	NONE	NONE
20MB	(2) 1M x 36	(2) 4M x 36	(2) 4M x 36	(2) 1M x 36
24MB	(2) 4M x 36	(2) 8M X 36	NONE	NONE
24MB	(2) 4M x 36	(2) 4M x 36	(2) 4M x 36	NONE

Continued on next page . . .

ADVANCED LOGIC RESEARCH, INC.

EVOLUTION V ST/PCI

... continued from previous page

DRAM CONFIGURATION				
32MB	(2) 8M X 36	(2) 8M X 36	NONE	NONE
32MB	(2) 16M X 36	NONE	NONE	NONE
32MB	(2) 4M x 36	(2) 4M x 36	(2) 4M x 36	(2) 4M x 36
34MB	(2) 1M x 36	(2) 16M X 36	NONE	NONE
36MB	(2) 2M x 36	(2) 16M X 36	NONE	NONE
36MB	(2) 1M x 36	(2) 16M X 36	NONE	(2) 1M x 36
40MB	(2) 4M x 36	(2) 16M X 36	NONE	NONE
48MB	(2) 8M X 36	(2) 16M X 36	NONE	NONE
48MB	(2) 4M x 36	(2) 16M X 36	NONE	(2) 4M x 36
64MB	(2) 16M X 36	(2) 16M X 36	NONE	NONE
64MB	(2) 32M x 36	NONE	NONE	NONE
66MB	(2) 1M x 36	(2) 32M x 36	NONE	NONE
66MB	(2) 1M x 36	(2) 16M X 36	(2) 16M X 36	NONE
68MB	(2) 2M x 36	(2) 32M x 36	NONE	NONE
68MB	(2) 1M x 36	(2) 16M X 36	(2) 16M X 36	(2) 1M x 36
72MB	(2) 4M x 36	(2) 32M x 36	NONE	NONE
72MB	(2) 4M x 36	(2) 16M X 36	(2) 16M X 36	NONE
80MB	(2) 8M x 36	(2) 32M x 36	NONE	NONE
80MB	(2) 4M x 36	(2) 16M X 36	(2) 16M X 36	(2) 4M x 36
96MB	(2) 16M X 36	(2) 32M x 36	NONE	NONE
96MB	(2) 16M X 36	(2) 16M X 36	(2) 16M X 36	NONE
128MB	(2) 32M x 36	(2) 32M x 36	NONE	NONE
128MB	(2) 16M X 36	(2) 16M X 36	(2) 16M X 36	(2) 16M X 36