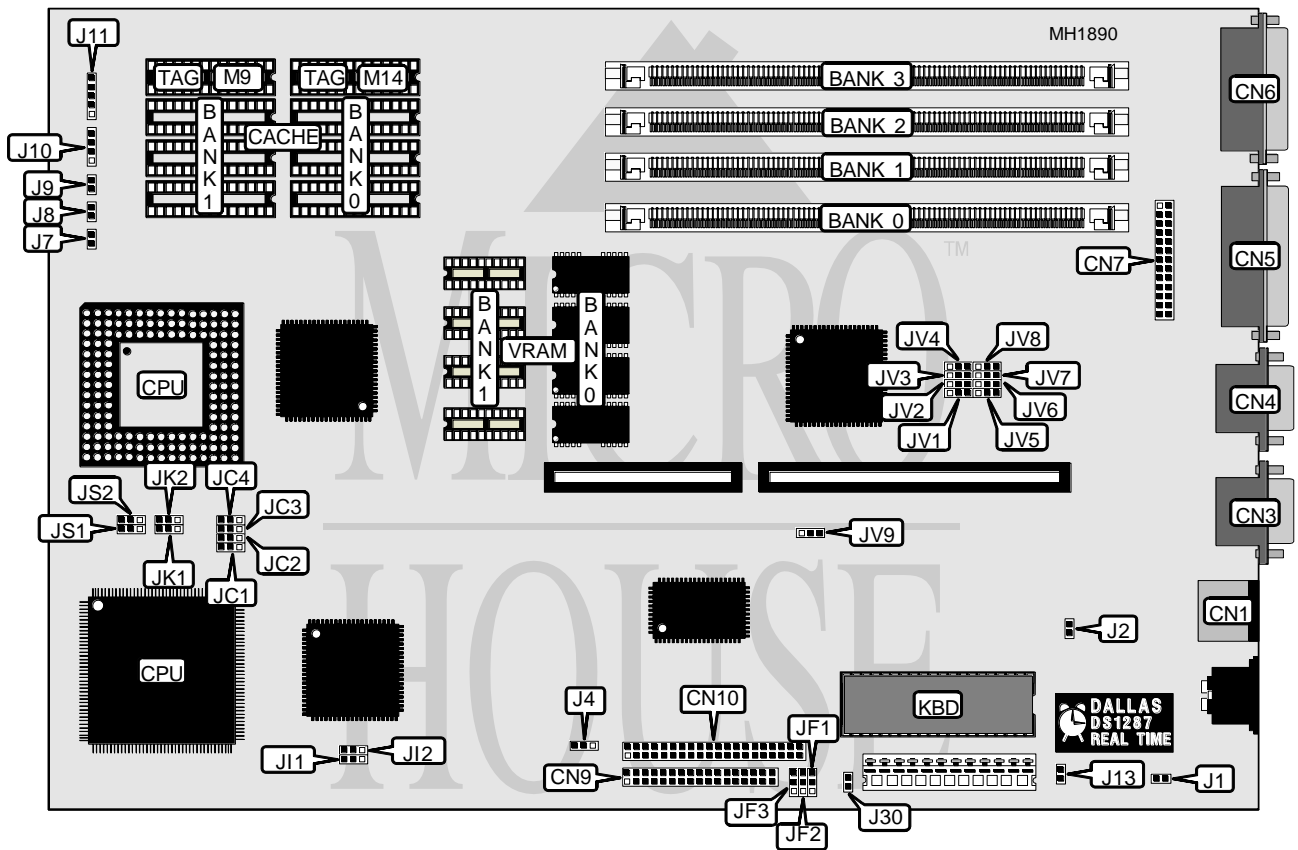


FIRST INTERNATIONAL COMPUTER, INC.

486 - V A L

Processor	80486SX/80487SX/80486DX/80486DX2
Processor Speed	20/25/33/50(internal)/50/66(internal)MHz
Chip Set	VIA
Max. Onboard DRAM	64MB
Cache	64/128/256KB
BIOS	AMI
Dimensions	330mm x 218mm
I/O Options	Floppy drive interface, IDE interface, parallel port, PS/2 mouse port, serial ports (2), VGA feature connector, VGA port
NPU Options	None



CONNECTIONS			
Purpose	Location	Purpose	Location
PS/2 mouse port	CN1	IDE interface	CN10
Serial port 1	CN3	IDE interace LED	J4
Serial port 2	CN4	Turbo LED	J7
Parallel port	CN5	Turbo switch	J8
VGA port	CN6	Reset switch	J9
Video feature connector	CN7	Speaker	J10
Floppy drive interface	CN9	Power LED & keylock	J11

Continued on next page...

FIRST INTERNATIONAL COMPUTER, INC.
486 - V A L

... continued from previous page.

USER CONFIGURABLE SETTINGS		
Function	Jumper	Position
í Real time clock normal operation	J1	Open
Real time clock clear	J1	Closed
í Flash BIOS write protect enabled	J2	Open
Flash BIOS write protect disabled	J2	Closed
í Monitor type select color	J13	Closed
Monitor type select monochrome, VGA or EGA	J13	Open
í I/O channel ready enabled	J30	Closed
I/O channel ready disabled	J30	Open
í Factory configured - do not alter	JF1	pins 2 & 3 closed
í Factory configured - do not alter	JF2	pins 2 & 3 closed
í Factory configured - do not alter	JF3	pins 2 & 3 closed
í Keyboard IRQ set for AMI 8042 KF	J11	pins 1 & 2 closed
Keyboard IRQ set for another version	J11	pins 2 & 3 closed
í PS/2 mouse IRQ set for AMI 8042 KF	J12	pins 1 & 2 closed
PS/2 mouse IRQ set for another version	J12	pins 2 & 3 closed
í Local type tri-state	JV2	pins 1 & 2 closed
Local type level	JV2	pins 2 & 3 closed
í Local access for DAC enabled	JV3	pins 1 & 2 closed
A10 busline for DAC enabled	JV3	pins 2 & 3 closed
í Local bus select 86C805 enabled	JV4	pins 1 & 2 closed
Local bus select 86C805 disabled	JV4	pins 2 & 3 closed
í Factory configured - do not alter	JV8	N/A
í Video interrupt select IRQ5	JV9	pins 1 & 2 closed
Video interrupt select IRQ9	JV9	pins 2 & 3 closed

DRAM CONFIGURATION				
Size	Bank 0	Bank 1	Bank 2	Bank 3
1MB	(1) 256K x 36	NONE	NONE	NONE
2MB	(1) 256K x 36	(1) 256K x 36	NONE	NONE
3MB	(1) 256K x 36	(1) 256K x 36	(1) 256K x 36	NONE
4MB	(1) 256K x 36	(1) 256K x 36	(1) 256K x 36	(1) 256K x 36
4MB	(1) 1M x 36	NONE	NONE	NONE
5MB	(1) 1M x 36	(1) 256K x 36	NONE	NONE
6MB	(1) 1M x 36	(1) 256K x 36	(1) 256K x 36	NONE
7MB	(1) 1M x 36	(1) 256K x 36	(1) 256K x 36	(1) 256K x 36
8MB	(1) 1M x 36	(1) 1M x 36	NONE	NONE
12MB	(1) 1M x 36	(1) 1M x 36	(1) 1M x 36	NONE
16MB	(1) 1M x 36	(1) 1M x 36	(1) 1M x 36	(1) 1M x 36
16MB	(1) 4M x 36	NONE	NONE	NONE
17MB	(1) 4M x 36	(1) 256K x 36	NONE	NONE
18MB	(1) 4M x 36	(1) 256K x 36	(1) 256K x 36	NONE
19MB	(1) 4M x 36	(1) 256K x 36	(1) 256K x 36	(1) 256K x 36
20MB	(1) 4M x 36	(1) 1M x 36	NONE	NONE
21MB	(1) 4M x 36	(1) 1M x 36	(1) 256K x 36	NONE

Continued on next page...

FIRST INTERNATIONAL COMPUTER, INC.

486 - V A L

... continued from previous page.

DRAM CONFIGURATION (continued)				
Size	Bank 0	Bank 1	Bank 2	Bank 3
22MB	(1) 4M x 36	(1) 1M x 36	(1) 256K x 36	(1) 256K x 36
24MB	(1) 4M x 36	(1) 1M x 36	(1) 1M x 36	NONE
28MB	(1) 4M x 36	(1) 1M x 36	(1) 1M x 36	(1) 1M x 36
32MB	(1) 4M x 36	(1) 4M x 36	NONE	NONE
33MB	(1) 4M x 36	(1) 4M x 36	(1) 256K x 36	NONE
34MB	(1) 4M x 36	(1) 4M x 36	(1) 256K x 36	(1) 256K x 36
36MB	(1) 4M x 36	(1) 4M x 36	(1) 1M x 36	NONE
40MB	(1) 4M x 36	(1) 4M x 36	(1) 1M x 36	(1) 1M x 36
48MB	(1) 4M x 36	(1) 4M x 36	(1) 4M x 36	NONE
64MB	(1) 4M x 36	(1) 4M x 36	(1) 4M x 36	(1) 4M x 36

CACHE CONFIGURATION				
Size	Bank 0	Bank 1	TAG/M9	TAG/M14
64KB	(4) 8K x 8	(4) 8K x 8	(1) 8K x 8	NONE
128KB	(4) 32K x 8	NONE	(1) 8K x 8	NONE
256KB	(4) 32K x 8	(4) 32K x 8	(1) 32K x 8	NONE

CACHE JUMPER CONFIGURATION		
Size	JS1	JS2
64KB	pins 1 & 2 closed	pins 1 & 2 closed
128KB	pins 2 & 3 closed	pins 1 & 2 closed
256KB	pins 2 & 3 closed	pins 2 & 3 closed

CPU TYPE/SPEED CONFIGURATION						
Type/Speed	JC1	JC2	JC3	JC4	JK1	JK2
80486SX/20	pins 2 & 3	pins 2 & 3	pins 2 & 3	Open	pins 1 & 2	pins 1 & 2
80486SX/25	pins 2 & 3	pins 2 & 3	pins 2 & 3	Open	pins 1 & 2	pins 1 & 2
80486SX/33	pins 2 & 3	pins 2 & 3	pins 2 & 3	Open	pins 2 & 3	pins 2 & 3
80487SX/20	pins 1 & 2	pins 1 & 2	pins 2 & 3	pins 2 & 3	pins 1 & 2	pins 1 & 2
80487SX/25	pins 1 & 2	pins 1 & 2	pins 2 & 3	pins 2 & 3	pins 1 & 2	pins 1 & 2
80486DX/20	pins 1 & 2	pins 1 & 2	pins 1 & 2	pins 1 & 2	pins 1 & 2	pins 1 & 2
80486DX/25	pins 1 & 2	pins 1 & 2	pins 1 & 2	pins 1 & 2	pins 1 & 2	pins 1 & 2
80486DX/33	pins 1 & 2	pins 1 & 2	pins 1 & 2	pins 1 & 2	pins 2 & 3	pins 2 & 3
80486DX/50	pins 1 & 2	pins 1 & 2	pins 1 & 2	pins 1 & 2	pins 2 & 3	pins 2 & 3
80486DX2/50i	pins 1 & 2	pins 1 & 2	pins 1 & 2	pins 1 & 2	pins 1 & 2	pins 1 & 2
80486DX2/66i	pins 1 & 2	pins 1 & 2	pins 1 & 2	pins 1 & 2	pins 2 & 3	pins 2 & 3

Note: Pins designated should be in the closed position.

Continued on next page ...

FIRST INTERNATIONAL COMPUTER, INC.

486-VAL

... continued from previous page

MONITOR TYPE SELECT			
Type	JV5	JV6	JV7
640 x 480/60Hz	pins 2 & 3 closed	pins 2 & 3 closed	pins 2 & 3 closed
640 x 480/70Hz	pins 1 & 2 closed	pins 2 & 3 closed	pins 2 & 3 closed
800 x 600/60Hz	pins 2 & 3 closed	pins 1 & 2 closed	pins 2 & 3 closed
800 x 600/70Hz	pins 1 & 2 closed	pins 1 & 2 closed	pins 2 & 3 closed
800 x 600/56Hz	pins 2 & 3 closed	pins 2 & 3 closed	pins 1 & 2 closed
1024 x 768/43Hz	pins 1 & 2 closed	pins 2 & 3 closed	pins 1 & 2 closed
1024 x 768/60Hz	pins 2 & 3 closed	pins 1 & 2 closed	pins 1 & 2 closed
1024 x 768/70Hz	pins 1 & 2 closed	pins 1 & 2 closed	pins 1 & 2 closed

VRAM CONFIGURATION			
Size	Bank 0	Bank 1	JV1
512KB	(4) 44256	None	pins 1 & 2 closed
1MB	(4) 44256	(4) 44256	pins 2 & 3 closed