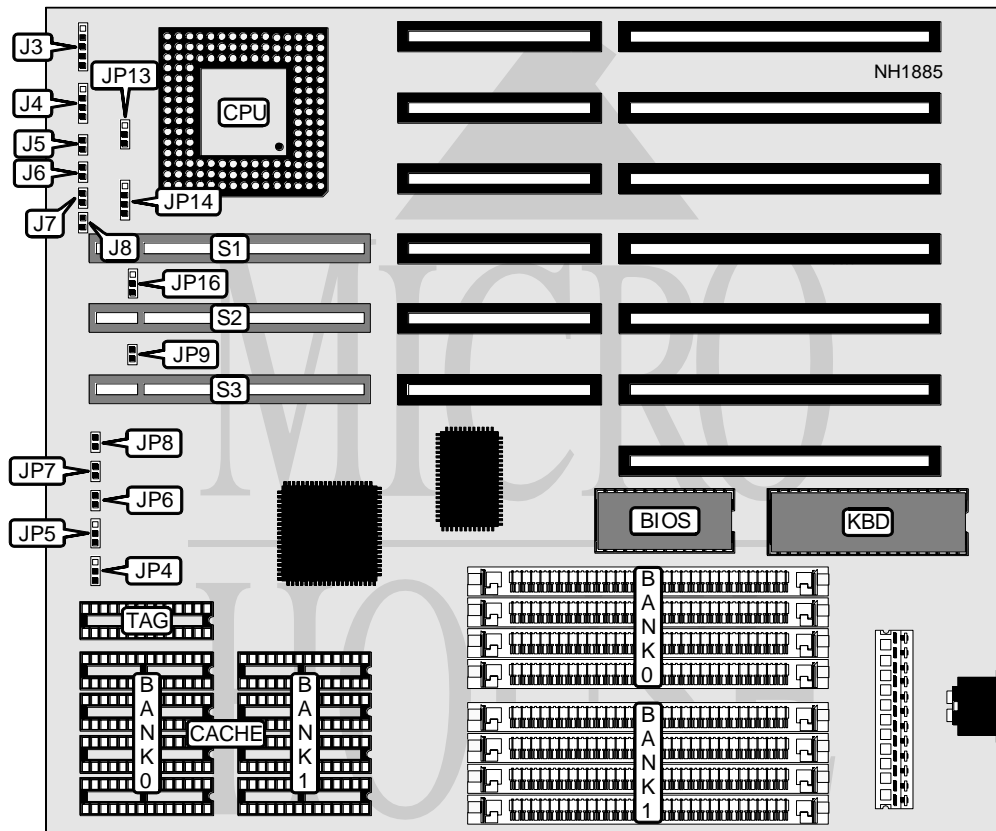


PC WARE INTERNATIONAL, INC. UMC 486 VESA BUS

| | |
|--------------------------|--|
| Processor | 80486SX/CX487S/80486DX/80486DX2 |
| Processor Speed | 20/25/33/50(internal)/50/66(internal)MHz |
| Chip Set | UMC |
| Max. Onboard DRAM | 32MB |
| Cache | 32/64/128/256KB |
| BIOS | AMI |
| Dimensions | 254mm x 218mm |
| I/O Options | 32-bit VESA local bus slots (3) |
| NPU Options | None |



| CONNECTIONS | | | |
|---------------------|----------|----------------------------|----------|
| Purpose | Location | Purpose | Location |
| Power LED & keylock | J3 | Reset switch | J7 |
| Speaker | J4 | 32-bit VESA local bus slot | S1 |
| Turbo LED | J5 | 32-bit VESA local bus slot | S2 |
| Turbo switch | J6 | 32-bit VESA local bus slot | S3 |

| USER CONFIGURABLE SETTINGS | | | |
|-------------------------------------|--------|----------|--|
| Function | Jumper | Position | |
| í Factory configured - do not alter | J8 | N/A | |

Continued next page...

PC WARE INTERNATIONAL, INC.
UMC 486 VESA BUS

... continued from previous page.

| DRAM CONFIGURATION | | |
|--------------------|--------------|--------------|
| Size | Bank 0 | Bank 1 |
| 1MB | (4) 256K x 9 | NONE |
| 2MB | (4) 256K x 9 | (4) 256K x 9 |
| 4MB | (4) 1M x 9 | NONE |
| 5MB | (4) 1M x 9 | (4) 256K x 9 |
| 8MB | (4) 1M x 9 | (4) 1M x 9 |
| 16MB | (4) 4M x 9 | NONE |
| 17MB | (4) 4M x 9 | (4) 256K x 9 |
| 20MB | (4) 4M x 9 | (4) 1M x 9 |
| 32MB | (4) 4M x 9 | (4) 4M x 9 |

| CACHE CONFIGURATION | | | |
|---------------------|-------------|-------------|-------------|
| Size | Bank 0 | Bank 1 | TAG |
| 32KB | (4) 32K x 8 | NONE | (1) 8K x 8 |
| 64KB | (4) 8K x 8 | (4) 8K x 8 | (1) 8K x 8 |
| 128KB | (4) 32K x 8 | NONE | (1) 8K x 8 |
| 256KB | (4) 32K x 8 | (4) 32K x 8 | (1) 32K x 8 |

| CACHE JUMPER CONFIGURATION | | | | | |
|----------------------------|------------|------------|------|--------|--------|
| Size | JP4 | JP5 | JP6 | JP7 | JP8 |
| 32KB | None | None | None | None | None |
| 64KB | Open | pins 1 & 2 | Open | Closed | Closed |
| 128KB | pins 2 & 3 | pins 2 & 3 | Open | Closed | Closed |
| 256KB | pins 1 & 2 | pins 1 & 2 | Open | Closed | Closed |

Note: Pins designated should be in the closed position.

| CPU TYPE CONFIGURATION | | | |
|------------------------|--------|-------------------|----------------------|
| Type | JP3 | JP13 | JP14 |
| 80486SX | N/A | pins 1 & 2 closed | pins 1 & 2 and 3 & 4 |
| CX487S | Closed | N/A | N/A |
| 80487SX | N/A | Open | pins 2 & 3 closed |
| 80486DX | N/A | pins 1 & 2 closed | pins 1 & 2 and 3 & 4 |
| 80486DX2 | N/A | pins 1 & 2 closed | pins 1 & 2 and 3 & 4 |
| ODP486SX | N/A | pins 2 & 3 closed | pins 1 & 2 and 3 & 4 |

Note: Pins designated should be in the closed position.

| VESA BUS SPEED CONFIGURATION | | |
|------------------------------|--------|-------------------|
| Speed | JP9 | JP16 |
| < 33MHz | Open | pins 1 & 2 closed |
| > 33MHz | Closed | pins 2 & 3 closed |