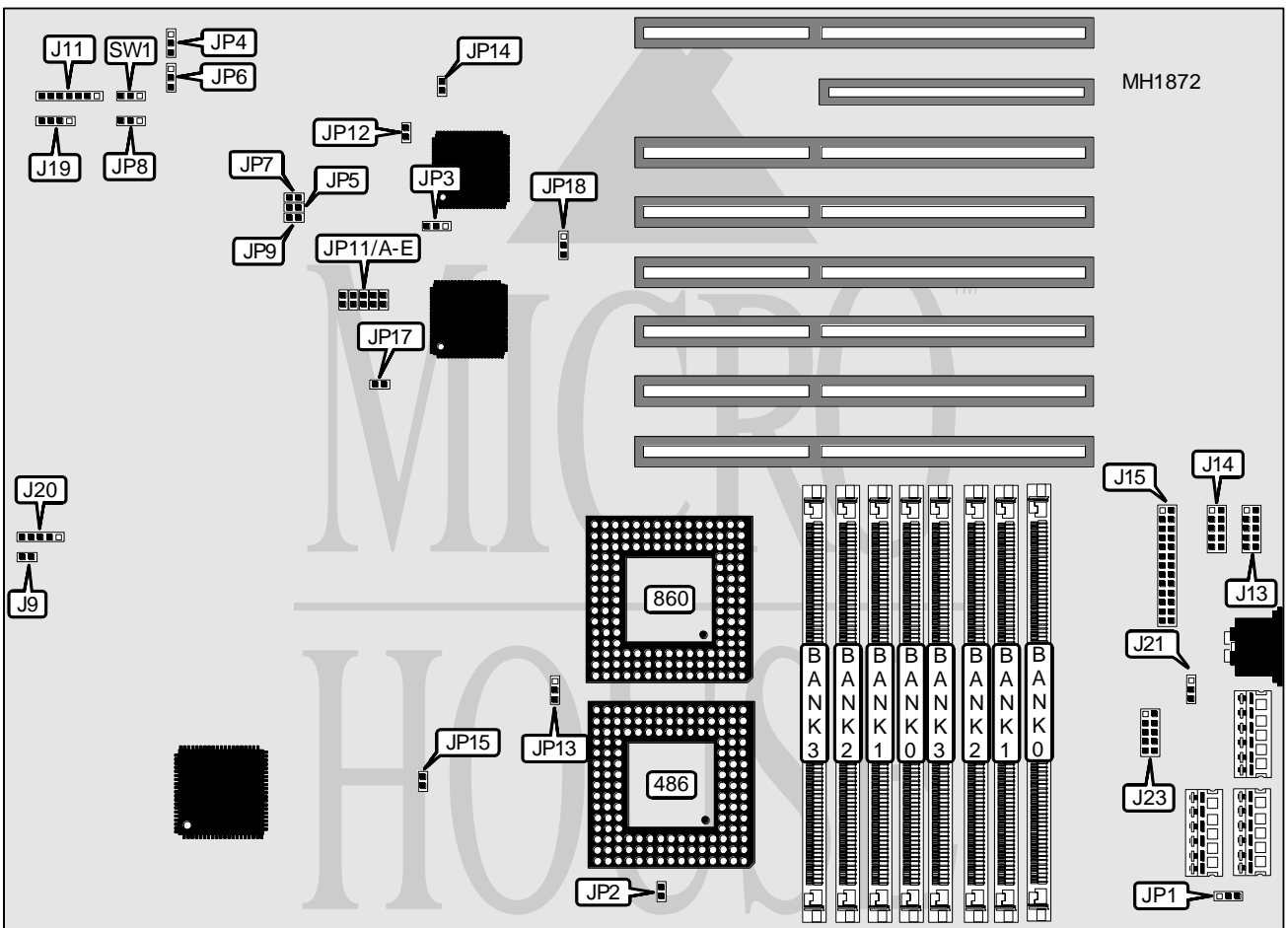


HAUPPAUGE COMPUTER WORKS, INC. 4860 MOTHERBOARD

| | |
|--------------------------|---------------------------------|
| Processor | 80486DX/i860 |
| Processor Speed | 25/33MHz |
| Chip Set | Intel |
| Max. onboard DRAM | 32MB |
| Cache | None |
| BIOS | Unidentified |
| Dimensions | 330mm x 218mm |
| I/O Options | Parallel port, serial ports (2) |
| NPU Options | None |



| CONNECTIONS | | | |
|------------------|----------|----------------------|----------|
| Purpose | Location | Purpose | Location |
| Reset switch | J9 | Speaker | J19 |
| Turbo LED/switch | J11 | Keylock & power LED | J20 |
| Serial port 1 | J13 | External battery | J21 |
| Serial port 2 | J14 | PS/2 mouse interface | J23 |
| Parallel port | J15 | | |

Continued on next page. . .

HAUPPAUGE COMPUTER WORKS, INC.

4860 MOTHERBOARD

...continued from previous page

| USER CONFIGURABLE SETTINGS | | |
|---|--------|-------------------|
| Function | Jumper | Position |
| í I860 interrupt select 61.7911msec | JP1 | Pins 2 & 3 closed |
| I860 timer interrupt select 30.8955msec | JP1 | Pins 1 & 2 closed |
| í Turbocache not installed | JP2 | Closed |
| Turbocache installed | JP2 | Open |
| í IRQ12 disabled | JP3 | Pins 1 & 2 closed |
| IRQ12 enabled | JP3 | Pins 2 & 3 closed |
| í Serial port 1 address COM1 select | JP4 | Pins 1 & 2 closed |
| Serial port 1 address COM3 select | JP4 | Pins 2 & 3 closed |
| í IRQ4 enabled | JP5 | Closed |
| IRQ4 disabled | JP5 | Open |
| í Serial port 2 address COM2 select | JP6 | Pins 1 & 2 closed |
| Serial port 2 address COM4 select | JP6 | Pins 2 & 3 closed |
| í IRQ3 enabled | JP7 | Closed |
| IRQ3 disabled | JP7 | Open |
| í Parallel port address LPT2 select | JP8 | Pins 2 & 3 closed |
| Parallel port address LPT1 select | JP8 | Pins 1 & 2 closed |
| í IRQ7 enabled | JP9 | Closed |
| IRQ7 disabled | JP9 | Open |
| í Factory configured-do not alter | JP12 | Closed |
| í Factory configured-do not alter | JP13 | Pins 2 & 3 closed |
| í 25MHz CPU speed select | JP14 | Closed |
| 33MHZ CPU speed select | JP14 | Open |
| í Write-protected caching by 486 & Turbocache | JP15 | Open |
| Write protected caching by Turbocache only | JP15 | Closed |
| í Factory configured-do not alter | JP17 | Open |
| í 64-bit slot write select CPUWR# | JP18 | Pins 2 & 3 closed |
| 64-bit slot write select BCPUWR# | JP18 | Pins 1 & 2 closed |
| í Monitor type select monochrome | SW1 | Open |
| Monitor type select color | SW1 | Pins 2 & 3 closed |
| Burn-in test enable | SW1 | Pins 1 & 2 closed |

| MOUSE/KEYBOARD BIOS CONFIGURATION | | | | | |
|-----------------------------------|--------|--------|--------|--------|--------|
| Setting | JP11A | JP11B | JP11C | JP11D | JP11E |
| XT keyboard | Open | Open | Closed | Closed | Closed |
| Mouse, AT keyboard | Closed | Closed | Open | Open | Open |
| No mouse installed | Open | Open | Closed | Closed | Closed |

Continued on next page . . .

HAUPPAUGE COMPUTER WORKS, INC.

4860 MOTHERBOARD

... continued from previous page

| DRAM CONFIGURATION | | | | |
|--------------------|---------------|---------------|---------------|---------------|
| Size | Bank 0 | Bank 1 | Bank 2 | Bank 3 |
| 4MB | (2) 512K x 36 | (2) 512K x 36 | (2) 512K x 36 | (2) 512K x 36 |
| 4MB | (2) 1MB x 36 | (2) 1MB x 36 | NONE | NONE |
| 4MB | (2) 2MB x 36 | NONE | NONE | NONE |
| 6MB | (2) 1MB x 36 | (2) 1MB x 36 | (2) 1MB x 36 | NONE |
| 8MB | (2) 1MB x 36 | (2) 1MB x 36 | (2) 1MB x 36 | (2) 1MB x 36 |
| 8MB | (2) 2MB x 36 | (2) 2MB x 36 | NONE | NONE |
| 8MB | (2) 4MB x 36 | NONE | NONE | NONE |
| 12MB | (2) 2MB x 36 | (2) 2MB x 36 | (2) 2MB x 36 | NONE |
| 16MB | (2) 4MB x 36 | (2) 4MB x 36 | NONE | NONE |
| 16MB | (2) 2MB x 36 | (2) 2MB x 36 | (2) 2MB x 36 | (2) 2MB x 36 |
| 16MB | (2) 8M x 36 | NONE | NONE | NONE |
| 32MB | (2) 8M x 36 | (2) 8M x 36 | NONE | NONE |