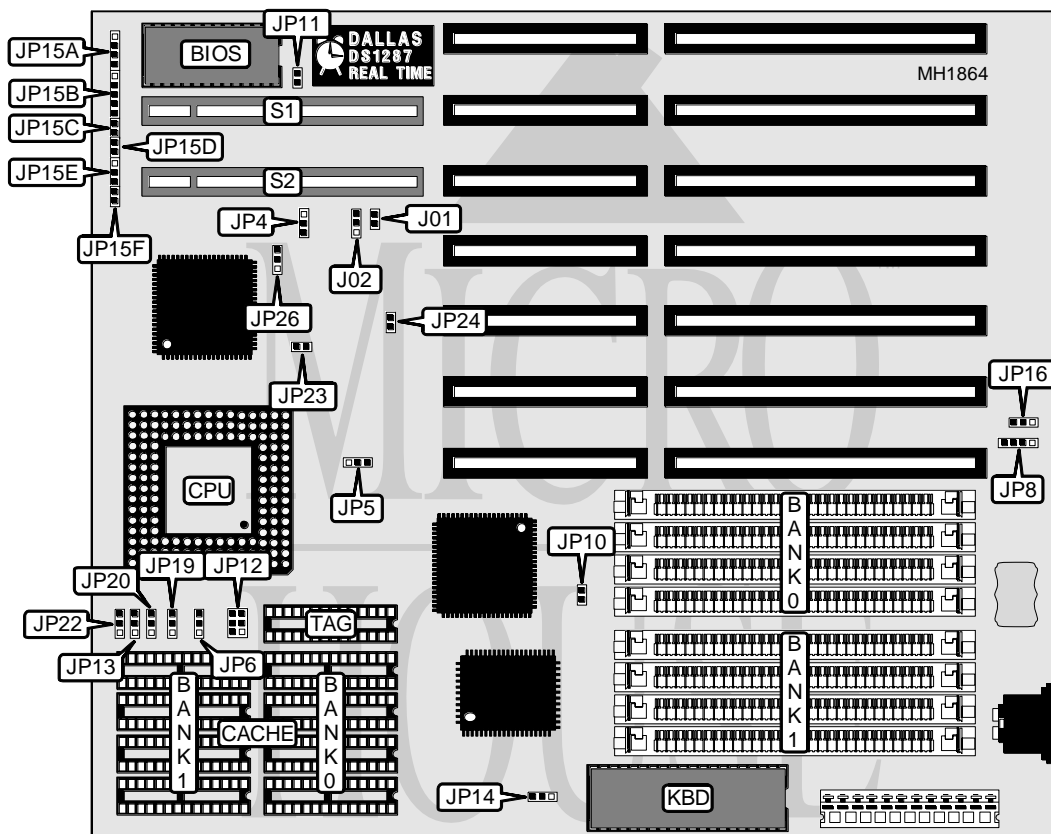


# BIOSTAR MICROTECH INTERNATIONAL CORPORATION MB-1425AEA-V, MB-1433AEA-V, MB-1440AEA-V, MB-1450AEA-V

<b>Processor</b>	80486SX/80487SX/80486DX/ODP486SX/80486DX2
<b>Processor Speed</b>	25/33/40/50(internal)/50/66(internal)MHz
<b>Chip Set</b>	Advanced
<b>Max. Onboard DRAM</b>	32MB
<b>Cache</b>	64/128/256KB
<b>BIOS</b>	AMI
<b>Dimensions</b>	254mm x 218mm
<b>I/O Options</b>	32-bit VESA local bus slots (2)
<b>NPU Options</b>	None



CONNECTIONS			
Purpose	Location	Purpose	Location
External battery	JP8	Turbo switch	JP15E
Speaker	JP15A	5V ground connector	JP15F
Power LED & keylock	JP15B	32-bit VESA Local bus slot	S1
Turbo LED	JP15C	32-bit VESA Local bus slot	S2
Reset switch	JP15D		

Continued next page...

# BIOSTAR MICROTECH INTERNATIONAL CORPORATION MB-1425AEA-V, MB-1433AEA-V, MB-1440AEA-V, MB-1450AEA-V

... continued from previous page.

USER CONFIGURABLE SETTINGS		
Function	Jumper	Position
í Factory configured - do not alter	J01	N/A
í Factory configured - do not alter	JP4	pins 2 & 3 closed
7 Bit TAG RAM installed	JP6	pins 1 & 2 closed
8 Bit TAG RAM installed	JP6	pins 2 & 3 closed
Dallas Real time clock 1287 installed	JP11	Closed
Battery & Real time clock 146818 installed	JP11	Open
í Monitor type select color	JP14	pins 2 & 3 closed
Monitor type select monochrome	JP14	pins 1 & 2 closed
í CMOS memory normal operation	JP16	pins 2 & 3 closed
CMOS memory clear	JP16	pins 1 & 2 closed
í CPU PQFP installed	JP22	pins 1 & 2 closed
CPU PGA installed	JP22	pins 2 & 3 closed
í VESA bus clock asynchronous mode	JP26	pins 1 & 2 closed
VESA bus clock synchronous mode	JP26	pins 2 & 3 closed

DRAM CONFIGURATION		
Size	Bank 0	Bank 1
1MB	(4) 256K x 9	NONE
2MB	(4) 256K x 9	(4) 256K x 9
4MB	(4) 1M x 9	NONE
5MB	(4) 256K x 9	(4) 1M x 9
8MB	(4) 1M x 9	(4) 1M x 9
16MB	(4) 4M x 9	NONE
20MB	(4) 1M x 9	(4) 4M x 9
32MB	(4) 4M x 9	(4) 4M x 9

CACHE CONFIGURATION				
Size	Max Cachable	Bank 0	Bank 1	TAG
64KB	8MB	(4) 8K x 8	(4) 8K x 8	(1) 8K x 8
128KB	16MB	(4) 32K x 8	NONE	(1) 8K x 8
256KB	32MB	(4) 32K x 8	(4) 32K x 8	(1) 32K x 8

CACHE JUMPER CONFIGURATION		
Size	JP12	JP19
64KB	Open	pins 1 & 2 closed
128KB	pins 1 & 2 and 3 & 4 closed	pins 2 & 3 closed
256KB	Closed	pins 1 & 2 closed

Continued next page...

# BIOSTAR MICROTECH INTERNATIONAL CORPORATION

## MB-1425AEA-V, MB-1433AEA-V, MB-1440AEA-V, MB-1450AEA-V

... continued from previous page.

CPU TYPE CONFIGURATION		
Type	JP13	JP20
80486SX	Open	pins 1 & 2 closed
80487SX	pins 1 & 2 closed	pins 2 & 3 closed
80486DX	pins 2 & 3 closed	pins 2 & 3 closed
ODP486SX	pins 1 & 2 closed	pins 2 & 3 closed
80486DX2	pins 2 & 3 closed	pins 2 & 3 closed

CPU SPEED CONFIGURATION				
Speed	JP5	JP10	JP23	JP24
25MHz	pins 2 & 3 closed	Open	Open	Open
33MHz	pins 2 & 3 closed	Open	Closed	Open
40MHz	pins 1 & 2 closed	Closed	Open	Closed
50i MHz	pins 2 & 3 closed	Open	Open	Open
50MHz	pins 1 & 2 closed	Closed	Open	Open
66i MHz	pins 2 & 3 closed	Open	Closed	Open

VESA WAIT STATE CONFIGURATION	
Wait states	J02
0 wait states	pins 1 & 2 closed
1 wait state	pins 2 & 3 closed