

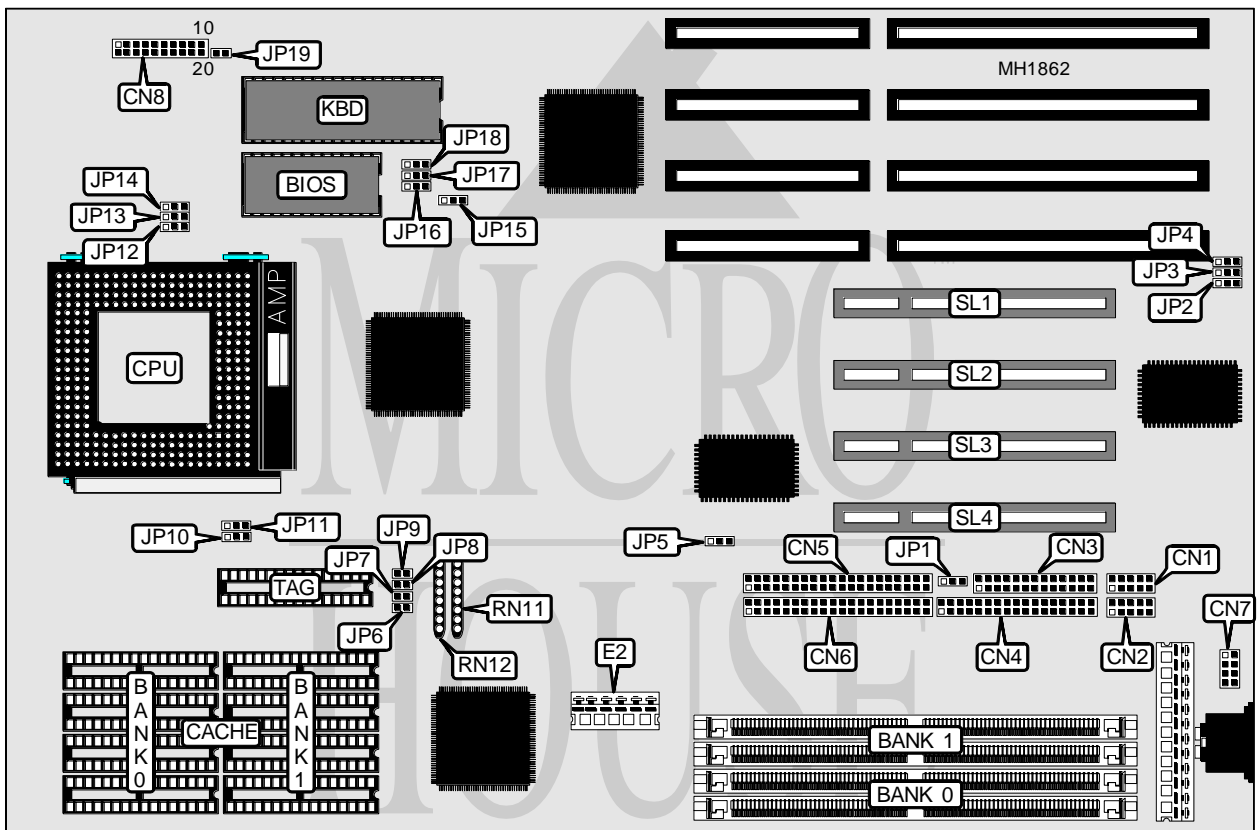
# ASUS COMPUTER INTERNATIONAL

## PCI/I-P54SP4

### UNIDENTIFIED

### SPI.V

<b>Processor</b>	Pentium
<b>Processor Speed</b>	60/75/90/100MHz
<b>Chip Set</b>	SIS
<b>Max. Onboard DRAM</b>	128MB
<b>Cache</b>	256/512/1024KB
<b>BIOS</b>	Award
<b>Dimensions</b>	330mm x 218mm
<b>I/O Options</b>	32-bit PCI slots (4), floppy drive interface, green PC connector, IDE interfaces (2), parallel port, PS/2 mouse interface, serial ports (2)
<b>NPU Options</b>	None



Continued on next page. . .

# PCI/I-P54SP4

## UNIDENTIFIED

### SPI.V

... continued from previous page

CONNECTIONS			
Purpose	Location	Purpose	Location
Serial port 2	CN1	Turbo LED	CN8 (pins 12 - 13)
Serial port 1	CN2	Green PC connector	CN8 (pins 14 - 15)
Parallel port	CN3	Turbo switch	CN8 (pins 16 - 17)
Floppy drive interface	CN4	Reset switch	CN8 (pins 19 - 20)
IDE interface (primary)	CN5	3.3V power connector	E2
IDE interface (secondary)	CN6	Green PC connector	JP1
PS/2 mouse interface	CN7	IDE interface LED	JP19
Power LED & keylock	CN8 (pins 1 - 5)	32-bit PCI slots	SL1 - SL4
Speaker	CN8 (pins 7 - 10)		

USER CONFIGURABLE SETTINGS		
Function	Jumper	Position
í On board I/O enabled	JP2	pins 1 & 2 closed
On board I/O disabled	JP2	pins 2 & 3 closed
í IDE interface enabled	JP5	pins 1 & 2 closed
IDE interface disabled	JP5	pins 2 & 3 closed
í Parity check enabled	JP15	pins 1 & 2 closed
Parity check disabled	JP15	pins 2 & 3 closed
í Mouse disabled	JP16	pins 1 & 2 closed
Mouse enabled	JP16	pins 2 & 3 closed
í Flash BIOS write protect disabled	JP17	pins 1 & 2 closed
Flash BIOS write protect enabled	JP17	pins 2 & 3 closed
í EPROM voltage select 5v	JP18	pins 1 & 2 closed
EPROM voltage select 12v	JP18	pins 2 & 3 closed

DRAM CONFIGURATION		
Size	Bank 0	Bank 1
2MB	(2) 256K x 36	NONE
4MB	(2) 256K x 36	(2) 256K x 36
4MB	(2) 512K x 36	NONE
8MB	(2) 512K x 36	(2) 512K x 36
8MB	(2) 1M x 36	NONE
12MB	(2) 512K x 36	(2) 1M x 36
16MB	(2) 1M x 36	(2) 1M x 36
16MB	(2) 2M x 36	NONE
20MB	(2) 512K x 36	(2) 2M x 36
24MB	(2) 1M x 36	(2) 2M x 36
32MB	(2) 2M x 36	(2) 2M x 36
32MB	(2) 4M x 36	NONE
36MB	(2) 512K x 36	(2) 4M x 36

Continued on next page. . .

# ASUS COMPUTER INTERNATIONAL

## PCI/I-P54SP4

### UNIDENTIFIED

### SPI.V

... continued from previous page

DRAM CONFIGURATION (Cont.)		
40MB	(2) 1M x 36	(2) 4M x 36
48MB	(2) 2M x 36	(2) 4M x 36
64MB	(2) 4M x 36	(2) 4M x 36
64MB	(2) 8M x 36	NONE
72MB	(2) 1M x 36	(2) 8M x 36
80MB	(2) 2M x 36	(2) 8M x 36
96MB	(2) 4M x 36	(2) 8M x 36
128MB	(2) 8M x 36	(2) 8M x 36

DRAM TERMINATOR CONFIGURATION		
Type	RN11	RN12
Single sided	Installed	Not installed
Double sided	Not installed	Installed

CACHE CONFIGURATION			
Size	Bank 0	Bank 1	TAG
256KB	(4) 32K x 8	(4) 32K x 8	(1) 8K x 8 or (1) 32K x 8
512KB	(4) 64K x 8	(4) 64K x 8	(1) 16K x 8 or (1) 32K x 8
1MB	(4) 128K x 8	(4) 128K x 8	(1) 32K x 8

CACHE JUMPER CONFIGURATION		
Size	JP10	JP11
256KB	pins 2 & 3 closed	pins 2 & 3 closed
512KB	pins 1 & 2 closed	pins 2 & 3 closed
1MB	pins 1 & 2 closed	pins 1 & 2 closed

CACHE VOLTAGE CONFIGURATION				
Type	JP6	JP7	JP8	JP9
3.3V in/out	Open	Open	Closed	Closed
5V in/3.3V out	Closed	Closed	Open	Open

CPU SPEED CONFIGURATION			
Speed	JP12	JP13	JP14
60MHz	pins 1 & 2 closed	pins 2 & 3 closed	pins 2 & 3 closed
75MHz	pins 2 & 3 closed	pins 1 & 2 closed	pins 1 & 2 closed
90MHz	pins 1 & 2 closed	pins 2 & 3 closed	pins 1 & 2 closed
100MHz	pins 2 & 3 closed	pins 1 & 2 closed	pins 2 & 3 closed

DMA CHANNEL CONFIGURATION		
DMA	JP3	JP4
Channel 1	pins 1 & 2 closed	pins 1 & 2 closed
Channel 3	pins 2 & 3 closed	pins 2 & 3 closed