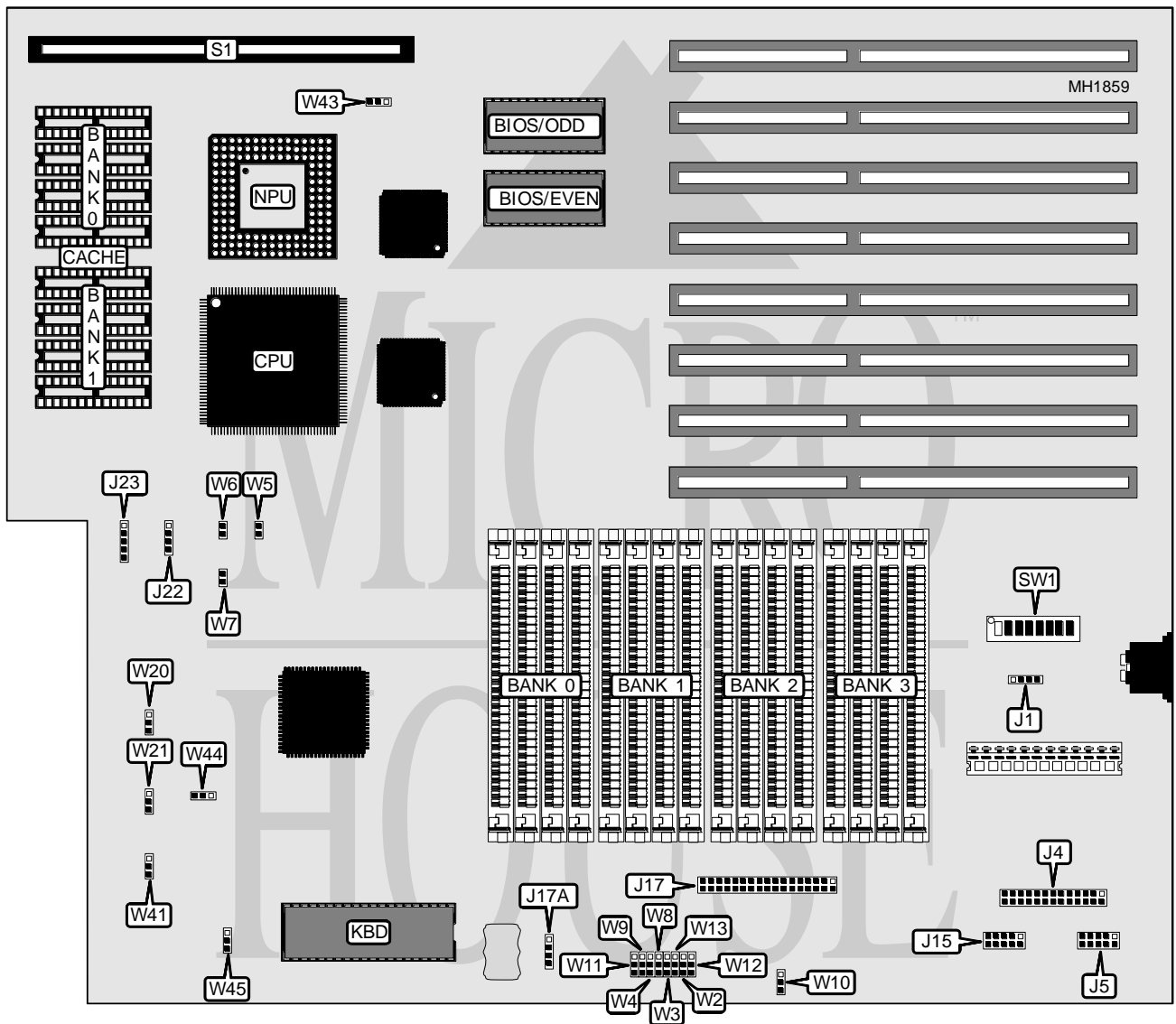


# MICRONICS COMPUTERS, INC. 80486 ASIC EISA SYSTEM BOARD

<b>Processor</b>	80486DX/80486DX2
<b>Processor Speed</b>	33/50(internal)MHz
<b>Chip Set</b>	Intel
<b>Max. Onboard DRAM</b>	64MB
<b>Cache</b>	64/256KB
<b>BIOS</b>	Phoenix
<b>Dimensions</b>	355mm x 304mm
<b>I/O Options</b>	32-bit local bus slot, floppy drive interface, parallel port, serial ports (2)
<b>NPU Options</b>	4167



Continued next page...

# MICRONICS COMPUTERS, INC.

## 80486 ASIC EISA SYSTEM BOARD

... continued from previous page.

CONNECTIONS			
Purpose	Location	Purpose	Location
External keyboard connector	J1	Speaker	J22
Parallel port	J4	Power LED & keylock	J23
Serial port 1	J5	32-bit Local bus slot	S1
Serial port 2	J15	Reset switch	W5
Floppy drive interface	J17	Turbo switch	W6
External battery	J17A	Turbo LED	W7

USER CONFIGURABLE SETTINGS		
Function	Jumper/Switch	Position
í Factory configured - do not alter	SW1/6	On
í Factory configured - do not alter	SW1/7	Off
í Monitor type select color	SW1/8	On
Monitor type select monochrome	SW1/8	Off
í Factory configured - do not alter	W11	pins 2 & 3 closed
í Factory configured - do not alter	W12	pins 1 & 2 closed
í Floppy drive interface enabled	W13	pins 1 & 2 closed
Floppy drive interface disabled	W13	pins 2 & 3 closed
í CPU select 486DX2/50MHz	W43	pins 1 & 2 closed
CPU select 486DX/33MHz	W43	Open
í Factory configured - do not alter	W45	pins 1 & 2 closed

PARALLEL PORT CONFIGURATION				
I/O Address	Port	W3	W4	W10
3BC-3BEh	LPT1	pins 1 & 2 closed	pins 2 & 3 closed	pins 2 & 3 closed
378-37Ah	LPT2	pins 1 & 2 closed	pins 1 & 2 closed	pins 2 & 3 closed
278-27Ah	LPT3	pins 2 & 3 closed	pins 1 & 2 closed	pins 2 & 3 closed
N/A	Disabled	pins 2 & 3 closed	pins 2 & 3 closed	pins 2 & 3 closed

SERIAL PORT CONFIGURATION				
Port 1	Port 2	W2	W8	W9
COM1	COM2	pins 1 & 2 closed	pins 1 & 2 closed	pins 1 & 2 closed
COM1	Disabled	pins 1 & 2 closed	pins 1 & 2 closed	pins 2 & 3 closed
Disabled	COM2	pins 2 & 3 closed	pins 1 & 2 closed	pins 1 & 2 closed
Disabled	Disabled	pins 2 & 3 closed	pins 1 & 2 closed	pins 2 & 3 closed

Continued next page...

# MICRONICS COMPUTERS, INC.

## 80486 ASIC EISA SYSTEM BOARD

... continued from previous page.

DRAM CONFIGURATION				
Size	Bank 0	Bank 1	Bank 2	Bank 3
1MB	(4)256K x 9	NONE	NONE	NONE
2MB	(4)256K x 9	(4)256K x 9	NONE	NONE
3MB	(4)256K x 9	(4)256K x 9	(4)256K x 9	NONE
4MB	(4)256K x 9	(4)256K x 9	(4)256K x 9	(4)256K x 9
4MB	(4)1M x 9	NONE	NONE	NONE
5MB	(4)256K x 9	(4)1M x 9	NONE	NONE
6MB	(4)256K x 9	(4)256K x 9	(4)1M x 9	NONE
7MB	(4)256K x 9	(4)256K x 9	(4)256K x 9	(4)1M x 9
8MB	(4)1M x 9	(4)1M x 9	NONE	NONE
9MB	(4)256K x 9	(4)1M x 9	(4)1M x 9	(4)1M x 9
10MB	(4)256K x 9	(4)256K x 9	(4)1M x 9	(4)1M x 9
12MB	(4)1M x 9	(4)1M x 9	(4)1M x 9	NONE
13MB	(4)256K x 9	(4)1M x 9	(4)1M x 9	(4)1M x 9
16MB	(4)1M x 9	(4)1M x 9	(4)1M x 9	(4)1M x 9
16MB	(4)4M x 9	NONE	NONE	NONE
20MB	(4)1M x 9	(4)4M x 9	NONE	NONE
24MB	(4)1M x 9	(4)1M x 9	(4)4M x 9	NONE
28MB	(4)1M x 9	(4)1M x 9	(4)1M x 9	(4)4M x 9
32MB	(4)4M x 9	(4)4M x 9	NONE	NONE
36MB	(4)1M x 9	(4)4M x 9	(4)4M x 9	NONE
40MB	(4)1M x 9	(4)1M x 9	(4)4M x 9	(4)4M x 9
48MB	(4)4M x 9	(4)4M x 9	(4)4M x 9	NONE
52MB	(4)1M x 9	(4)4M x 9	(4)4M x 9	(4)4M x 9
64MB	(4)4M x 9	(4)4M x 9	(4)4M x 9	(4)4M x 9

DRAM SWITCH CONFIGURATION					
Size	SW1/switch 1	SW1/switch 2	SW1/switch 3	SW1/switch 4	SW1/switch 5
1MB	On	On	On	On	On
2MB	Off	On	On	On	On
3MB	On	Off	On	On	On
4MB	Off	Off	On	On	On
4MB	On	On	Off	On	On
5MB	On	On	Off	Off	On
6MB	On	Off	On	Off	On
7MB	Off	On	On	Off	On
8MB	Off	On	Off	On	On
9MB	On	Off	Off	Off	On
10MB	Off	Off	On	Off	On
12MB	On	Off	Off	On	On
13MB	Off	Off	Off	Off	On
16MB	On	On	Off	On	On
16MB	Off	Off	Off	On	Off

Continued next page...

# MICRONICS COMPUTERS, INC.

## 80486 ASIC EISA SYSTEM BOARD

... continued from previous page.

DRAM SWITCH CONFIGURATION (CONT.)					
Size	SW1/switch 1	SW1/switch 2	SW1/switch 3	SW1/switch 4	SW1/switch 5
20MB	On	On	Off	Off	Off
24MB	On	Off	On	Off	Off
28MB	Off	On	On	Off	Off
32MB	Off	On	Off	On	Off
36MB	On	Off	Off	Off	Off
40MB	Off	Off	On	Off	Off
48MB	On	Off	Off	On	Off
52MB	Off	Off	Off	Off	Off
64MB	Off	Off	Off	On	Off

CACHE CONFIGURATION			
Size	Bank 0	Bank 1	TAG
64KB	(4) 8K x 8	(4) 8K x 8	(1) 32K x 8
256KB	(4) 32K x 8	(4) 32K x 8	(1) 32K x 8

Note: The exact location of TAG is unknown.

CACHE JUMPER CONFIGURATION				
Size	W20	W21	W41	W44
64KB	Open	Open	Open	Pins 2 & 3 closed
256KB	Pins 1 & 2 closed	Pins 1 & 2 closed	Pins 1 & 2 closed	Pins 1 & 2 closed