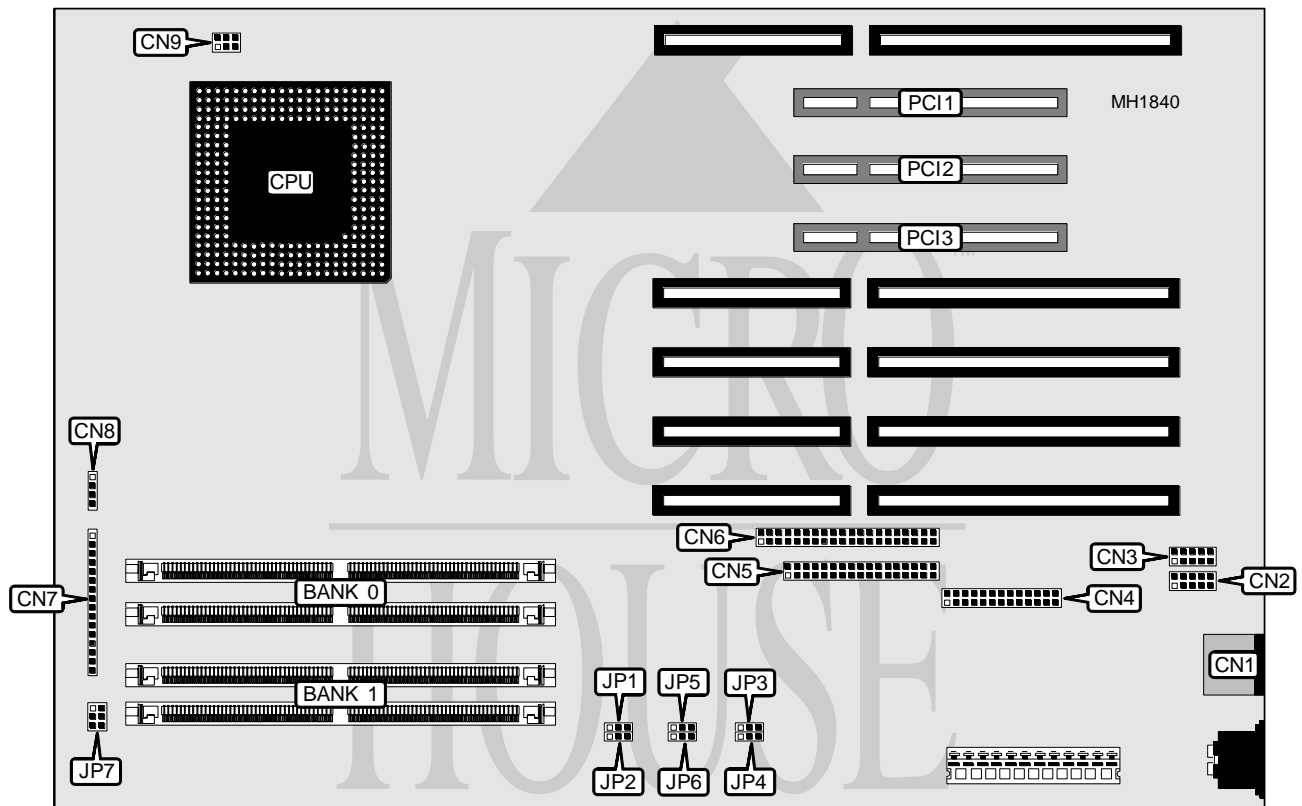


# DELL COMPUTER CORPORATION XPS P 60 FS/XPS P 60 M

<b>Processor</b>	Pentium
<b>Processor Speed</b>	60MHz
<b>Chip Set</b>	Intel
<b>Max. Onboard DRAM</b>	128MB
<b>Cache</b>	8KB (internal)
<b>BIOS</b>	Phoenix
<b>Dimensions</b>	330mm x 218mm
<b>I/O Options</b>	32-bit PCI local bus slots (3), floppy drive interface, IDE interface, parallel port, PS/2 mouse port, serial ports (2)
<b>NPU Options</b>	None



CONNECTIONS			
Purpose	Location	Purpose	Location
PS/2 mouse port	CN1	Hard drive indicator	CN7
Serial port 1	CN2	Speaker	CN8
Serial port 2	CN3	Chassis fan power	CN9
Parallel port	CN4	32-bit PCI Local bus slot	PCI1
Floppy drive interface	CN5	32-bit PCI Local bus slot	PCI2
IDE interface	CN6	32-bit PCI Local bus slot	PCI3
Note: All controls are located on the front panel.			

Continued next page...

# DELL COMPUTER CORPORATION

## XPS P60 FS/XPS P60 M

... continued from previous page.

USER CONFIGURABLE SETTINGS		
Function	Jumper	Position
í CMOS memory normal operation	JP1	pins 1 & 2 closed
CMOS memory clear	JP1	pins 2 & 3 closed
í Factory configured - do not alter	JP2	pins 2 & 3 closed
í Monitor type select color	JP3	pins 2 & 3 closed
Monitor type select monochrome	JP3	pins 1 & 2 closed
Password feature enabled	JP4	pins 1 & 2 closed
Password feature disabled	JP4	pins 2 & 3 closed
Allows user to enter system setup program	JP5	pins 1 & 2 closed
Prevents user from entering setup program	JP5	pins 2 & 3 closed
í Factory configured - do not alter	JP6	pins 1 & 2 closed
í Factory configured - do not alter	JP7	pins 5 & 6 closed

DRAM CONFIGURATION		
Size	Bank 0	Bank 1
8MB	(2) 4M x 36	NONE
16MB	(2) 4M x 36	(2) 4M x 36
16MB	(2) 8M x 36	NONE
24MB	(2) 4M x 36	(2) 8M x 36
24MB	(2) 8M x 36	(2) 4M x 36
32MB	(2) 8M x 36	(2) 8M x 36
32MB	(2) 16M x 36	NONE
40MB	(2) 4M x 36	(2) 16M x 36
40MB	(2) 16M x 36	(2) 4M x 36
48MB	(2) 8M x 36	(2) 16M x 36
48MB	(2) 16M x 36	(2) 8M x 36
64MB	(2) 16M x 36	(2) 16M x 36
64MB	(2) 32M x 36	NONE
72MB	(2) 4M x 36	(2) 32M x 36
72MB	(2) 32M x 36	(2) 4M x 36
80MB	(2) 8M x 36	(2) 32M x 36
80MB	(2) 32M x 36	(2) 8M x 36
96MB	(2) 16M x 36	(2) 32M x 36
96MB	(2) 32M x 36	(2) 16M x 36
128MB	(2) 32M x 36	(2) 32M x 36