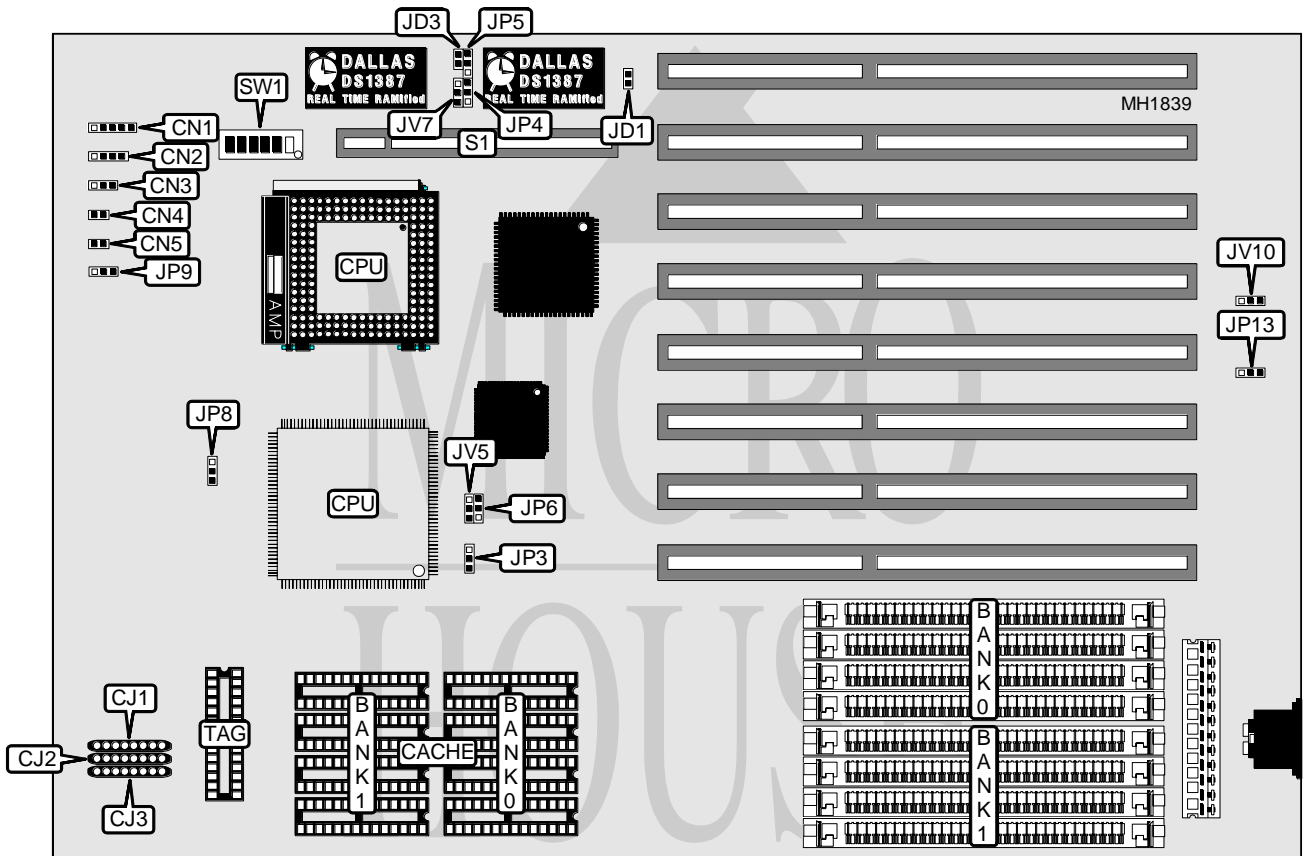


ASUS COMPUTER INTERNATIONAL VL/EISA-486SVI

| | |
|--------------------------|---|
| Processor | 80486SX/80487SX/80486DX/ODP486SX/80486DX2 |
| Processor Speed | 16/20/25/33/50(internal)/50/66(internal)MHz |
| Chip Set | SIS |
| Max. Onboard DRAM | 128MB |
| Cache | 64/128/256KB |
| BIOS | Award |
| Dimensions | 330mm x 218mm |
| I/O Options | 32-bit VESA local bus slot |
| NPU Options | None |



| CONNECTIONS | | | |
|---------------------|----------|----------------------------|----------|
| Purpose | Location | Purpose | Location |
| Power LED & keylock | CN1 | Turbo LED | CN4 |
| Speaker | CN2 | Turbo switch | CN5 |
| Reset switch | CN3 | 32-bit VESA Local bus slot | S1 |

Continued next page...

ASUS COMPUTER INTERNATIONAL

VL/EISA-486SV1

... continued from previous page.

| USER CONFIGURABLE SETTINGS | | |
|-------------------------------------|--------|-------------------|
| Function | Jumper | Position |
| í Factory configured - do not alter | JD1 | Open |
| í Factory configured - do not alter | JD3 | Open |
| í Factory configured - do not alter | JP3 | pins 2 & 3 closed |
| í Factory configured - do not alter | JP4 | pins 1 & 2 closed |
| í Factory configured - do not alter | JP5 | pins 1 & 2 closed |
| í Factory configured - do not alter | JP6 | pins 1 & 2 closed |
| í CPU PGA installed | JP8 | pins 1 & 2 closed |
| CPU PQFP installed | JP8 | pins 2 & 3 closed |
| í Factory configured - do not alter | JP13 | pins 1 & 2 closed |
| í Factory configured - do not alter | JV5 | pins 1 & 2 closed |
| í Factory configured - do not alter | JV7 | pins 1 & 2 closed |
| í Factory configured - do not alter | JV10 | pins 1 & 2 closed |

| DRAM CONFIGURATION | | |
|--------------------|--------------|--------------|
| Size | Bank 0 | Bank 1 |
| 1MB | (4) 256K x 9 | NONE |
| 2MB | (4) 256K x 9 | (4) 256K x 9 |
| 4MB | (4) 1M x 9 | NONE |
| 8MB | (4) 1M x 9 | (4) 1M x 9 |
| 16MB | (4) 4M x 9 | NONE |
| 20MB | (4) 1M x 9 | (4) 4M x 9 |
| 32MB | (4) 4M x 9 | (4) 4M x 9 |
| 64MB | (4) 16M x 9 | NONE |
| 128MB | (4) 16M x 9 | (4) 16M x 9 |

| CACHE CONFIGURATION | | | |
|---------------------|-------------|-------------|-------------|
| Size | Bank 0 | Bank 1 | TAG |
| 64KB | (4) 8K x 8 | (4) 8K x 8 | (1) 8K x 8 |
| 128KB | (4) 32K x 8 | NONE | (1) 8K x 8 |
| 256KB | (4) 32K x 8 | (4) 32K x 8 | (1) 32K x 8 |

| CACHE RESISTER CONFIGURATION | | | |
|------------------------------|---------------|---------------|---------------|
| Size | CJ1 | CJ2 | CJ3 |
| 64KB | Installed | Not installed | Not installed |
| 128KB | Not installed | Installed | Not installed |
| 256KB | Not installed | Not installed | Installed |

| CPU TYPE CONFIGURATION | | | | | | |
|------------------------|-------|-------|-------|-------|-------|-------|
| Type | SW1/1 | SW1/2 | SW1/3 | SW1/4 | SW1/5 | SW1/6 |
| 80486SX | Off | Off | Off | Off | On | On |
| 80487SX | Off | On | On | On | Off | On |
| 80486DX | On | On | On | Off | Off | On |
| ODP486SX | Off | On | On | On | Off | On |
| 80486DX2 | On | On | On | Off | Off | On |

Continued next page...

ASUS COMPUTER INTERNATIONAL.
VL/EISA-486SV1*... continued from previous page.*

| CPU SPEED CONFIGURATION | |
|-------------------------|-------------------|
| Speed | JP9 |
| 16MHz | pins 2 & 3 closed |
| 20MHz | pins 2 & 3 closed |
| 25MHz | pins 2 & 3 closed |
| 33MHz | pins 2 & 3 closed |
| 50iMHz | pins 2 & 3 closed |
| 50MHz | pins 1 & 2 closed |
| 66iMHz | pins 2 & 3 closed |