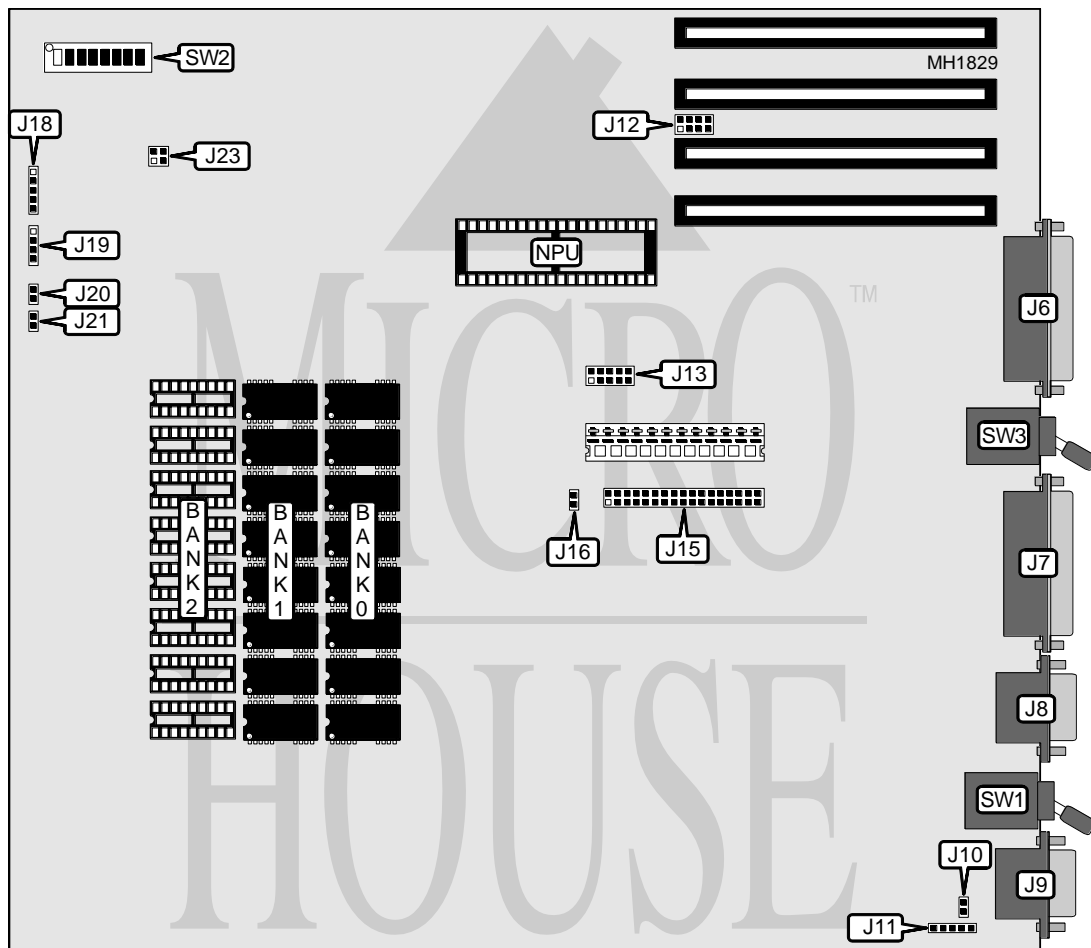


LEADING EDGE PRODUCTS, INC. MODEL D (REVISION 8)

Processor	8088 (exact location unknown)
Processor Speed	4.77/7.16MHz
Chip Set	Unknown
Max. Onboard DRAM	768KB
Cache	None
BIOS	Unknown
Dimensions	254mm x 218mm
I/O Options	Color monitor port, floppy drive interface, light pen connector, monochrome monitor port, parallel port, serial port
NPU Options	8087



CONNECTIONS			
Purpose	Location	Purpose	Location
Parallel port	J6	Floppy drive interface	J15
Serial port	J7	Keyboard	J18
Color monitor port	J8	Speaker	J19
Monochrome port	J9	Reset switch	J20
Light pen connector	J11	Power-on LED indicator	J21

Continued next page...

LEADING EDGE PRODUCTS, INC.

MODEL D (REVISION 8)

... continued from previous page.

USER CONFIGURABLE SETTINGS		
Function	Jumper	Position
í Factory configured - do not alter	J5	N/A
í Monitor enabled	J10	Closed
Monitor disabled	J10	Open
í Floppy drive interface enabled	J13	pins 4 & 9 closed
Floppy drive interface disabled	J13	pins 4 & 9 open
í Serial port enabled	J13	pins 5 & 10 closed
Serial port disabled	J13	pins 5 & 10 open
í Parallel port enabled	J13	pins 3 & 8 closed
Parallel port disabled	J13	pins 3 & 8 open
í Real Time Clock enabled	J13	pins 2 & 7 closed
Real Time Clock disabled	J13	pins 2 & 7 open
í Factory configured - do not alter	J13	pins 1 & 6 open
í BIOS ROM type 8/16K	J16	Open
BIOS ROM type 32K	J16	Closed
í Video mode TTL monochrome	SW1	Up
Video mode CGA	SW1	Down
í Factory configured - do not alter	SW2/switch 1	Off
í NPU disabled	SW2/switch 2	On
NPU enabled	SW2/switch 2	Off
í Factory configured - do not alter	SW2/switch 3	On
í Memory test 64KB	SW2/switch 4	On
Memory test all	SW2/switch 4	Off
í Factory configured - do not alter	SW2/switch 5	Off
í Factory configured - do not alter	SW2/switch 6	Off

Note: The exact location of J5 is unknown.

DRAM CONFIGURATION				
Size	Bank 0	Bank 1	Bank 2	J23
512KB	(9) 41256	(9) 41256	NONE	pins 1 & 2 closed
768KB	(9) 41256	(9) 41256	(9) 41256	pins 3 & 4 closed

Note: Even though this system has 768KB installed, only 640KB is available to the user.

CPU SPEED CONFIGURATION	
Speed	SW3
4.77MHz	Down
7.16MHz	Up

FLOPPY DISK DRIVES INSTALLED		
Number of Drives	SW2/switch 7	SW2/switch 8
1	On	On
2	Off	On
3	On	Off
4	Off	Off

Continued next page...

LEADING EDGE PRODUCTS, INC.
MODEL D (REVISION 8)*... continued from previous page.*

REAL TIME CLOCK INTERRUPT SELECT	
IRQ	J12
2	pins 1 & 5 closed
4	pins 2 & 6 closed
5	pins 3 & 7 closed
7	pins 4 & 8 closed