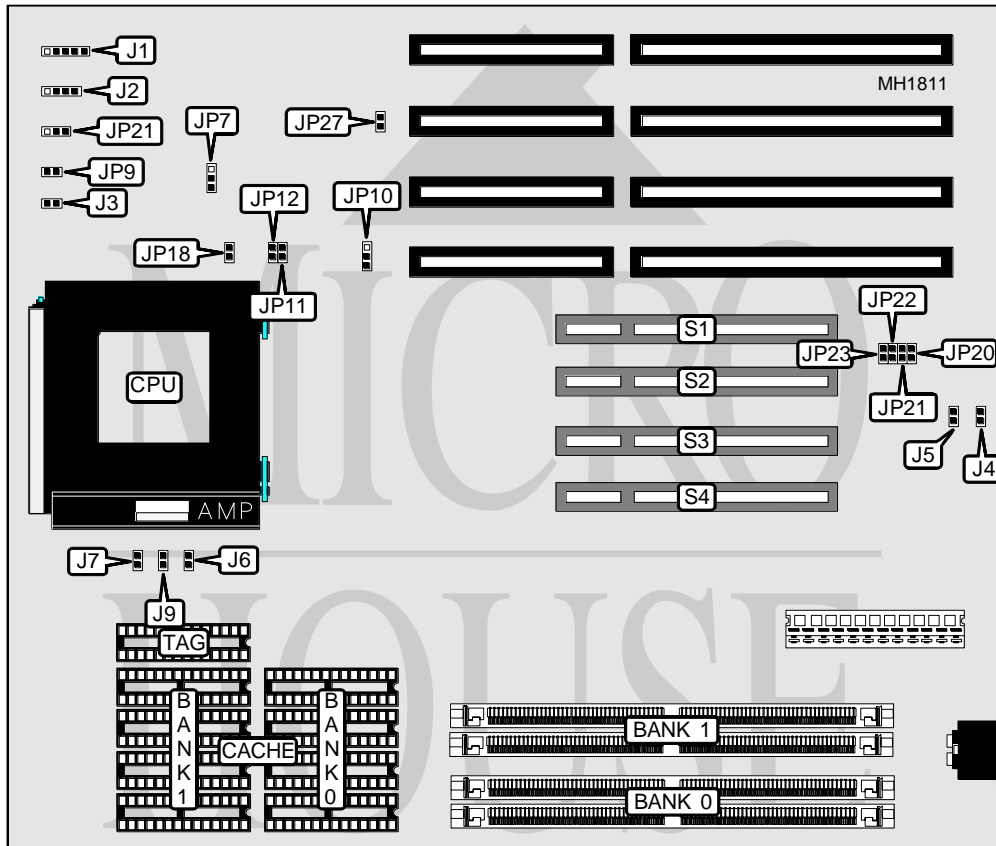


# GIGA-BYTE TECHNOLOGY CO., LTD.

## GA - 486 IS

<b>Processor</b>	80486SX/80487SX/80486DX/ODP486SX/80486DX2/Pentium Overdrive
<b>Processor Speed</b>	25/33/50(internal)/66(internal)MHz
<b>Chip Set</b>	Intel
<b>Max. Onboard DRAM</b>	128MB
<b>Cache</b>	64/128/256/512KB
<b>BIOS</b>	AMI
<b>Dimensions</b>	230mm x 218mm
<b>I/O Options</b>	32-bit PCI local bus slots (4)
<b>NPU Options</b>	None



CONNECTIONS			
Purpose	Location	Purpose	Location
Power LED & keylock	J1	Power down mode LED	JP27
Speaker	J2	32-bit PCI Local bus slot	S1
Turbo LED	J3	32-bit PCI Local bus slot	S2
External power control port	J5	32-bit PCI Local bus slot	S3
Reset switch	JP9	32-bit PCI Local bus slot	S4
Turbo switch	JP21		

Continued next page...

GIGA-BYTE TECHNOLOGY CO., LTD.  
GA - 4861S

... continued from previous page.

c

USER CONFIGURABLE SETTINGS		
Function	Jumper	Position
í CMOS memory normal operation	J4	Open
CMOS memory clear	J4	Closed

DRAM CONFIGURATION		
Size	Bank 0	Bank 3
2MB	(2) 1M x 36	NONE
4MB	(2) 1M x 36	(2) 1M x 36
4MB	(2) 2M x 36	NONE
6MB	(2) 2M x 36	(2) 1M x 36
8MB	(2) 2M x 36	(2) 2M x 36
8MB	(2) 4M x 36	NONE
10MB	(2) 4M x 36	(2) 1M x 36
12MB	(2) 4M x 36	(2) 2M x 36
16MB	(2) 4M x 36	(2) 4M x 36
16MB	(2) 8M x 36	NONE
18MB	(2) 8M x 36	(2) 1M x 36
20MB	(2) 8M x 36	(2) 2M x 36
24MB	(2) 8M x 36	(2) 4M x 36
32MB	(2) 8M x 36	(2) 8M x 36
32MB	(2) 16M x 36	NONE
34MB	(2) 16M x 36	(2) 1M x 36
36MB	(2) 16M x 36	(2) 2M x 36
40MB	(2) 16M x 36	(2) 4M x 36
48MB	(2) 16M x 36	(2) 8M x 36
64MB	(2) 16M x 36	(2) 16M x 36
64MB	(2) 32M x 36	NONE
128MB	(2) 32M x 36	(2) 32M x 36

CACHE CONFIGURATION			
Size	Bank 0	Bank 1	TAG
64KB	(4) 8K x 8	(4) 8K x 8	(1) 8K x 8
128KB	(4) 32K x 8	NONE	(1) 8K x 8
256KB	(4) 32K x 8	(4) 32K x 8	(1) 16K x 8
512KB	(4) 128K x 8	NONE	(1) 32K x 8

CACHE JUMPER CONFIGURATION					
Size	J6	J7	J9	JP11	JP12
64KB	Open	Open	Open	Closed	Closed
128KB	Open	Closed	Open	Closed	Open
256KB	Closed	Closed	Open	Open	Closed
512KB	Closed	Closed	Closed	Open	Open

Continued next page...

GIGA-BYTE TECHNOLOGY CO., LTD.  
GA - 486 IS

... continued from previous page.

CPU TYPE CONFIGURATION	
Type	JP10
80486SX	pins 2 & 3 closed
80487SX	pins 2 & 3 closed
80486DX	pins 1 & 2 closed
ODP486SX	pins 1 & 2 closed
80486DX2	pins 1 & 2 closed
Pentium Overdrive	pins 1 & 2 closed

CPU SPEED CONFIGURATION		
Speed	JP7	JP18
25MHz	pins 2 & 3 closed	Closed
33MHz	pins 1 & 2 closed	Open
50iMHz	pins 2 & 3 closed	Closed
66iMHz	pins 1 & 2 closed	Open

PCI IRQ INTERRUPT CONFIGURATION				
IRQ	JP20	JP21	JP22	JP23
9	Closed	Open	Open	Open
10	Open	Closed	Open	Open
11	Open	Open	Closed	Open
14	Open	Open	Open	Closed