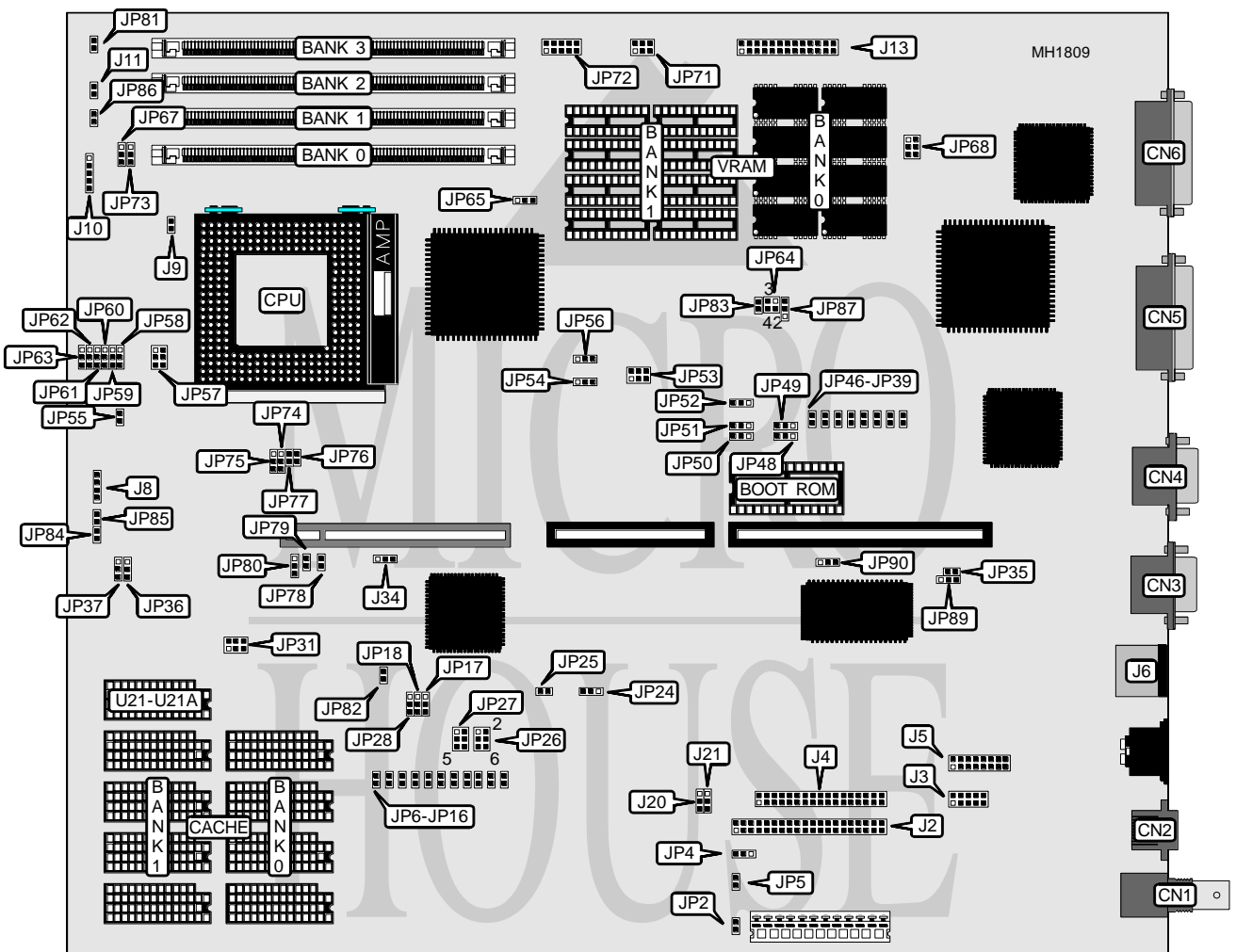


DIAMOND FLOWER, INC.

G 4 8 6 E C V - A I O

Processor	80486SX/CX486S/80487SX/CX486S2/CX486DX/80486DX/ODP486SX/ 80486DX2/CX486DX2/80486DX4/Pentium Overdrive
Processor Speed	25/33/50(internal)/66(internal)/99(internal)MHz
Chip Set	EFAR
Max. Onboard DRAM	64MB
Cache	128/256/512/1024KB
BIOS	Award
Dimensions	330mm x 218mm
I/O Options	Floppy drive interface, IDE interface, LAN, parallel port, PS/2 mouse port, riser card, serial ports (2), VGA feature connector
NPU Options	None



Continued next page...

DIAMOND FLOWER, INC.

G 4 8 6 E C V - A I O

... continued from previous page.

CONNECTIONS			
Purpose	Location	Purpose	Location
BNC connector	CN1	AUI connector	J5
RJ-45 connector	CN2	PS/2 mouse port	J6
Serial port 1	CN3	12V DC power CPU cooling fan	J9
Serial port 2	CN4	Power LED & keylock	J10
Parallel port	CN5	Reset switch	J11
Analog connector	CN6	Feature connector	J13
IDE interface	J2	Standby mode LED	JP81
LAN extra connector	J3	Standby mode switch connector	JP86
Floppy drive interface	J4	Keyboard connector	KB1

USER CONFIGURABLE SETTINGS		
Function	Jumper	Position
1 Internal speaker enabled	J8	pins 1 & 2 closed
External speaker enabled	J8	Open
1 Factory configured - do not alter	JP2	Open
1 Monitor type select color	JP4	pins 1 & 2 closed
Monitor type select monochrome	JP4	pins 2 & 3 closed
1 Password normal operation	JP5	Open
Password clear	JP5	Closed
1 Factory configured - do not alter	JP9	Open
1 Factory configured - do not alter	JP10	Open
1 Factory configured - do not alter	JP11	Open
1 Factory configured - do not alter	JP12	Open
1 Factory configured - do not alter	JP13	Open
1 Factory configured - do not alter	JP14	Open
1 Factory configured - do not alter	JP15	Open
1 Factory configured - do not alter	JP16	Closed
1 Factory configured - do not alter	JP20	pins 2 & 3 closed
1 Factory configured - do not alter	JP21	pins 2 & 3 closed
1 Factory configured - do not alter	JP24	pins 2 & 3 closed
1 Factory configured - do not alter	JP25	Closed
1 Factory configured - do not alter	JP34	pins 2 & 3 closed
1 LAN buffer size 16K	JP35	Open
LAN buffer size 64K	JP35	Closed
1 Factory configured - do not alter	JP39	Open
1 Factory configured - do not alter	JP40	Open
1 Factory configured - do not alter	JP41	Open
1 Factory configured - do not alter	JP42	Open
1 Factory configured - do not alter	JP43	Open
1 Factory configured - do not alter	JP44	Open
1 Factory configured - do not alter	JP45	Open
1 Factory configured - do not alter	JP46	Open

Continued next page...

DIAMOND FLOWER, INC.

G 4 8 6 E C V - A I O

... continued from previous page.

USER CONFIGURABLE SETTINGS (CONT.)		
Function	Jumper	Position
í Flash EPROM 5V	JP50	pins 1 & 2 closed
Flash EPROM 12V	JP50	pins 2 & 3 closed
í Flash EPROM type Intel 28F010	JP51	pins 1 & 2 closed
Flash EPROM type Intel 28F010	JP51	pins 2 & 3 closed
í EPROM enabled	JP52	pins 2 & 3 closed
Flash EPROM enabled	JP52	pins 1 & 2 closed
í Factory configured - do not alter	JP54	pins 2 & 3 closed
í Factory configured - do not alter	JP56	pins 1 & 2 closed
í 5V CPU voltage select	JP57	pins 1 & 3 and 2 & 4
3V CPU voltage select	JP57	pins 3 & 5 and 4 & 6
í VESA VGA enabled	JP64	pins 1 & 2 and 3 & 4
VESA VGA disabled	JP64	Open
í Factory configured - do not alter	JP68	pins 1 & 2 and 5 & 6
í CPU clock running at 33MHz	JP71	Open
CPU clock running at 50MHz	JP71	pins 1 & 2 closed
í Local bus timing selector 1	JP71	Open
Local bus timing selector 2	JP71	pins 3 & 4 closed
VESA VL bus of 72Hz at modes 3, 12, 5E, & 5F	JP71	pins 5 & 6 closed
VESA VL bus of 60Hz at modes 3, 12, 5E, & 5F	JP71	Open
í Intel 80486DX4/99 standby mode CPU fan control disabled	JP73	pins 1 & 2 closed
Intel 80486DX4/99 standby mode CPU fan control enabled	JP73	pins 2 & 3 closed
í Factory configured - do not alter	JP76	Closed
í Factory configured - do not alter	JP77	Closed
í Factory configured - do not alter	JP78	Closed
í Factory configured - do not alter	JP79	Closed
í Factory configured - do not alter	JP80	pins 2 & 3 closed
í Green PC enabled	JP82	Closed
Green PC disabled	JP82	Open
í Standby mode reduces the clock to 8 MHz	JP83	Closed
Clock is unchanged under standby mode	JP83	Open
í Flush Ethernet setting disabled	JP89	pins 2 & 3 closed
Flush Ethernet setting enabled	JP89	pins 1 & 2 closed
í LAN enabled	JP90	pins 1 & 2 closed
LAN disabled	JP90	pins 2 & 3 closed
Note: Pins designated should be in the closed position.		

DRAM CONFIGURATION				
Size	Bank 0	Bank 1	Bank 2	Bank 3
1MB	(1) 256K x 36	NONE	NONE	NONE
2MB	(1) 256K x 36	(1) 256K x 36	NONE	NONE
2MB	(1) 512K x 36	NONE	NONE	NONE
3MB	(1) 256K x 36	(1) 256K x 36	(1) 256K x 36	NONE
4MB	(1) 256K x 36	(1) 256K x 36	(1) 256K x 36	(1) 256K x 36
4MB	(1) 1M x 36	NONE	NONE	NONE
4MB	(1) 512K x 36	NONE	(1) 512K x 36	NONE

Continued next page...

DIAMOND FLOWER, INC.
G486ECV-AIO

... continued from previous page.

DRAM CONFIGURATION (CONT.)				
Size	Bank 0	Bank 1	Bank 2	Bank 3
8MB	(1) 1M x 36	(1) 1M x 36	NONE	NONE
8MB	(1) 2M x 36	NONE	NONE	NONE
12MB	(1) 1M x 36	(1) 1M x 36	(1) 1M x 36	NONE
16MB	(1) 1M x 36	(1) 1M x 36	(1) 1M x 36	(1) 1M x 36
16MB	(1) 4M x 36	NONE	NONE	NONE
16MB	(1) 2M x 36	NONE	(1) 2M x 36	NONE
32MB	(1) 4M x 36	(1) 4M x 36	NONE	NONE
32MB	(1) 8M x 36	NONE	NONE	NONE
48MB	(1) 4M x 36	(1) 4M x 36	(1) 4M x 36	NONE
64MB	(1) 4M x 36	(1) 4M x 36	(1) 4M x 36	(1) 4M x 36
64MB	(1) 8M x 36	NONE	(1) 8M x 36	NONE

CACHE CONFIGURATION							
Size	Bank 0	Bank 1	TAG/U21	TAG/U21A	JP17	JP18	JP28
128KB	(4) 32K x 8	NONE	(1) 32K x 8	(1) 128K x 8	2 & 3	2 & 3	2 & 3
256KB	(4) 32K x 8	(4) 32K x 8	(1) 32K x 8	(1) 128K x 8	2 & 3	1 & 2	1 & 2
512KB	(4) 128K x 8	NONE	(1) 32K x 8	(1) 128K x 8	1 & 2	2 & 3	2 & 3
1MB	(4) 128K x 8	(4) 128K x 8	(1) 128K x 8	(1) 128K x 8	1 & 2	1 & 2	1 & 2

Note: Pins designated should be in the closed position.

CACHE JUMPER CONFIGURATION			
Size	JP31/pins 1 & 2	JP31/pins 3 & 4	JP31/pins 5 & 6
128KB	Open	Open	Open
256KB	Closed	Open	Open
512KB	Closed	Closed	Open
1MB	Closed	Closed	Closed

VIDEO MEMORY CONFIGURATION		
Size	Bank 0	Bank 1
1MB	(8) 256K x 4	NONE
2MB	(8) 256K x 4	(8) 256K x 4

Continued next page...

DIAMOND FLOWER, INC.

G 4 8 6 E C V - A I O

... continued from previous page.

CPU TYPE CONFIGURATION							
Type	JP6	JP7	JP8	JP58	JP59 & JP60	JP61	JP62
80486SX	N/A	N/A	N/A	pins 1 & 2	pins 2 & 3	pins 1 & 2	Open
CX486S	Closed	Open	Open	pins 2 & 3	pins 2 & 3	pins 2 & 3	Open
80487SX	N/A	N/A	N/A	pins 1 & 2	pins 2 & 3	pins 1 & 2	pins 1 & 2
80486DX	N/A	N/A	N/A	pins 1 & 2	pins 2 & 3	pins 1 & 2	pins 1 & 2
CX486DX	Closed	Open	Closed	pins 2 & 3	pins 2 & 3	pins 2 & 3	pins 2 & 3
ODP486SX	N/A	N/A	N/A	pins 1 & 2	pins 2 & 3	pins 1 & 2	pins 1 & 2
CX486S2	Closed	Open	Open	pins 2 & 3	pins 2 & 3	pins 2 & 3	Open
80486DX2	N/A	N/A	N/A	pins 1 & 2	pins 2 & 3	pins 1 & 2	pins 1 & 2
CX486DX2	Closed	Open	Closed	pins 2 & 3	pins 2 & 3	pins 2 & 3	pins 2 & 3
80486DX4	N/A	N/A	N/A	pins 1 & 2	pins 2 & 3	pins 1 & 2	pins 1 & 2
Pentium Overdrive	N/A	N/A	N/A	pins 1 & 2	pins 1 & 2	pins 1 & 2	pins 1 & 2

Note: Pins designated should be in the closed position.

CPU SPEED CONFIGURATION				
Speed	JP53/pins 1 & 2	JP53/pins 3 & 4	JP53/pins 5 & 6	JP67
25MHz	Open	Open	Closed	Open
33MHz	Closed	Closed	Closed	Open
50i MHz	Open	Open	Closed	pins 2 & 3
66i MHz	Closed	Closed	Closed	Open
99i MHz	Closed	Closed	Closed	Open

Note: Pins designated should be in the closed position.

CPU WRITE-BACK CONFIGURATION		
Type	JP74	JP75
1 Other CPUs	Open	pins 2 & 3 closed
Cyrix write-back	pins 1 & 2 closed	pins 2 & 3 closed
Intel write-back	pins 2 & 3 closed	pins 2 & 3 closed
No write-back	N/A	pins 1 & 2 closed

SYSTEM MANAGEMENT MODE CPU SELECT		
Type	JP63	JP65
1 Other	Open	Open
Cyrix SMM	pins 2 & 3 closed	pins 1 & 2 closed
Intel SMM	pins 1 & 2 closed	pins 2 & 3 closed

VESA WAIT STATE/BUS SPEED CONFIGURATION			
CPU speed	Wait states	JP36	JP37
≤ 33MHz	0 wait states	pins 2 & 3 closed	pins 1 & 2 closed
> 33MHz	1 wait state	pins 1 & 2 closed	pins 2 & 3 closed

Continued next page...

DIAMOND FLOWER, INC.
G486ECV-AIO

... continued from previous page.

VESA VL-BUS VGA CONFIGURATION		
Refresh rates	JP72/pins 1 & 2	JP72/pins 3 & 4
87Hz Interlaced	Open	Open
60Hz Non-interlaced	Closed	Closed
70Hz Non-interlaced	Closed	Open
72Hz Non-interlaced	Closed	Closed

Note: When using the built-in VESA VL-bus VGA, pins 1 to 8 should be set to match the refresh rates of the monitor attached to the G486ECV-AIO.

ECP DACK SELECT			
Refresh rates	JP26/pins 1 & 2	JP26/pins 3 & 4	JP26/pins 5 & 6
1 Dack 1	Open	Closed	Open
Dack 0	Closed	Open	Open
Dack 3	Open	Open	Closed

ECP DRQ SELECT			
Refresh rates	JP27/pins 1 & 2	JP27/pins 3 & 4	JP27/pins 5 & 6
1 DRQ1	Open	Closed	Open
DRQ0	Closed	Open	Open
DRQ3	Open	Open	Closed

PARALLEL PORT INTERRUPT SELECT		
IRQ	JP48	JP49
1 IRQ7	pins 1 & 2 closed	pins 2 & 3 closed
IRQ5	pins 2 & 3 closed	pins 1 & 2 closed

Note: The default for JP49 is pins 1 & 2 closed.

CPU FAN TYPE CONFIGURATION			
Fan	JP84	JP85	JP87
1 12V	Closed	Open	N/A
5V	Open	Closed	pins 1 & 2 closed
Connected to hard drive	N/A	N/A	pins 2 & 3 closed