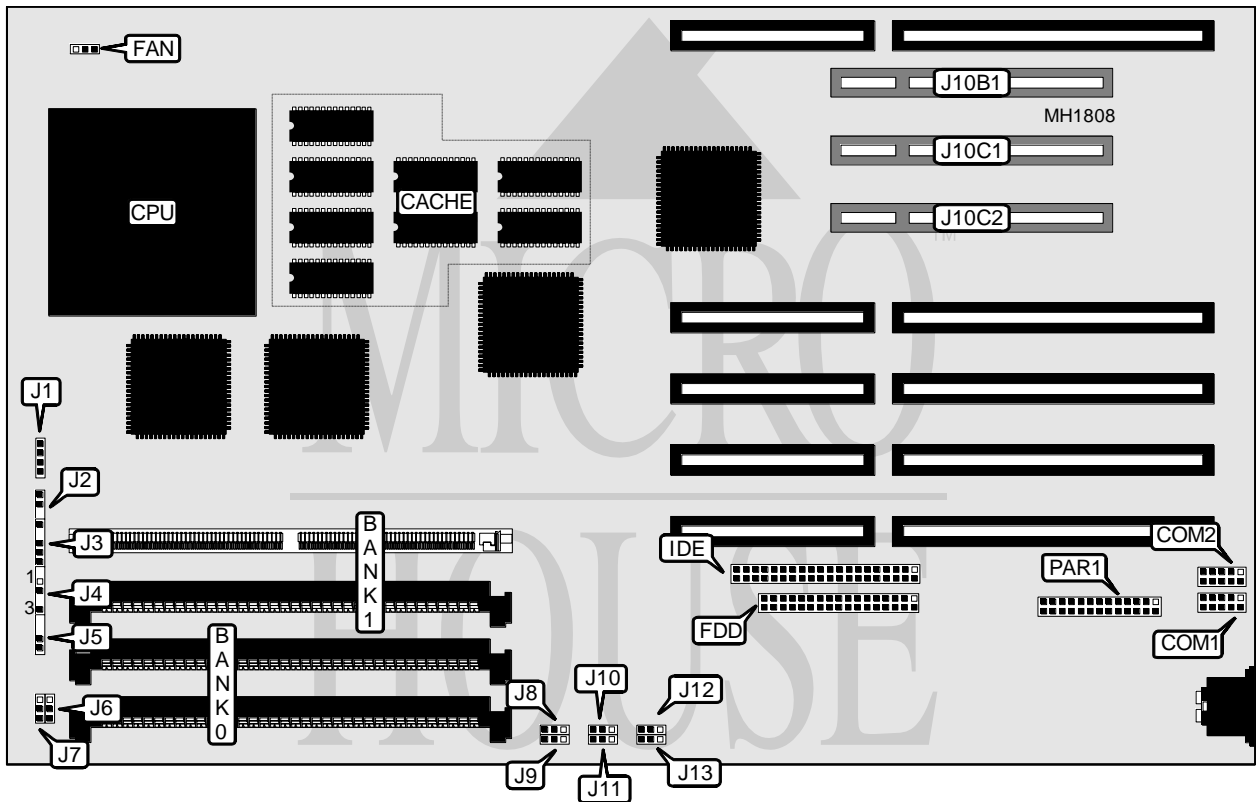


DIAMOND FLOWER, INC. THE LEOPARD

Processor	Pentium
Processor Speed	60/66MHz
Chip Set	Intel
Max. Onboard DRAM	128MB
Cache	256KB
BIOS	AMI
Dimensions	330mm x 218mm
I/O Options	32-bit PCI local bus slots (2), floppy drive interface, IDE interface, parallel port, serial ports (2)
NPU Options	None



CONNECTIONS			
Purpose	Location	Purpose	Location
Serial port	COM1	IDE interface LED	J4/pins 1 & 3
Serial port	COM2	Turbo LED	J5
Auxiliary 12 volt fan	FAN	Turbo switch	J7
Floppy drive interface	FDD	Parallel port	PAR1
IDE interface	IDE	32-bit PCI Local bus slot	J10B1
Speaker	J1	32-bit PCI Local bus slot	J10C1
Reset switch	J2	32-bit PCI Local bus slot	J10C2
Power LED & keylock	J3		

Continued next page...

DIAMOND FLOWER, INC.
THE LEOPARD

... continued from previous page.

USER CONFIGURABLE SETTINGS		
Function	Jumper	Position
í CPU speed select 60MHz	J7	pins 2 & 3 closed
CPU speed select 66MHz	J7	pins 1 & 2 closed
í CMOS memory normal operation	J8	pins 2 & 3 closed
CMOS memory clear	J8	pins 1 & 2 closed
í Flash BIOS normal operation	J9	pins 1 & 2 closed
Flash BIOS recovery mode	J9	pins 2 & 3 closed
í CMOS setup is available	J10	pins 2 & 3 closed
CMOS setup is not available	J10	pins 1 & 2 closed
í Flash BIOS write protect disabled	J11	pins 1 & 2 closed
Flash BIOS write protect enabled	J11	pins 2 & 3 closed
í Monitor type select color	J12	pins 1 & 2 closed
Monitor type select monochrome	J12	pins 2 & 3 closed
í CMOS password enabled	J13	pins 2 & 3 closed
CMOS password disabled/clear	J13	pins 1 & 2 closed

CACHE CONFIGURATION
The cache is factory installed at 256KB and is not user configurable.

DRAM CONFIGURATION		
Size	Bank 0	Bank 1
2MB	(2) 256K x 36	NONE
4MB	(2) 256K x 36	(2) 256K x 36
4MB	(2) 512K x 36	NONE
6MB	(2) 256K x 36	(2) 512K x 36
6MB	(2) 512K x 36	(2) 256K x 36
8MB	(2) 512K x 36	(2) 512K x 36
8MB	(2) 1M x 36	NONE
10MB	(2) 256K x 36	(2) 1M x 36
10MB	(2) 1M x 36	(2) 256K x 36
12MB	(2) 512K x 36	(2) 1M x 36
12MB	(2) 1M x 36	(2) 512K x 36
16MB	(2) 1M x 36	(2) 1M x 36
16MB	(2) 2M x 36	NONE
18MB	(2) 256K x 36	(2) 2M x 36
18MB	(2) 2M x 36	(2) 256K x 36
20MB	(2) 512K x 36	(2) 2M x 36
20MB	(2) 2M x 36	(2) 512K x 36
24MB	(2) 1M x 36	(2) 2M x 36
24MB	(2) 2M x 36	(2) 1M x 36
32MB	(2) 2M x 36	(2) 2M x 36
32MB	(2) 4M x 36	NONE
34MB	(2) 256K x 36	(2) 4M x 36
34MB	(2) 4M x 36	(2) 256K x 36
36MB	(2) 512K x 36	(2) 4M x 36
36MB	(2) 4M x 36	(2) 512K x 36

Continued next page...

DIAMOND FLOWER, INC.
THE LEOPARD

... continued from previous page.

DRAM CONFIGURATION (CONT.)		
Size	Bank 0	Bank 1
40MB	(2) 1M x 36	(2) 4M x 36
40MB	(2) 4M x 36	(2) 1M x 36
48MB	(2) 2M x 36	(2) 4M x 36
48MB	(2) 4M x 36	(2) 2M x 36
64MB	(2) 4M x 36	(2) 4M x 36
64MB	(2) 8M x 36	NONE
66MB	(2) 256K x 36	(2) 8M x 36
66MB	(2) 8M x 36	(2) 256K x 36
68MB	(2) 512K x 36	(2) 8M x 36
68MB	(2) 8M x 36	(2) 512K x 36
72MB	(2) 1M x 36	(2) 8M x 36
72MB	(2) 8M x 36	(2) 1M x 36
80MB	(2) 2M x 36	(2) 8M x 36
80MB	(2) 8M x 36	(2) 2M x 36
96MB	(2) 4M x 36	(2) 8M x 36
96MB	(2) 8M x 36	(2) 4M x 36
128MB	(2) 8M x 36	(2) 8M x 36

CPU SPEED CONFIGURATION	
Speed	J6
60MHz	pins 2 & 3 closed
66MHz	pins 1 & 2 closed