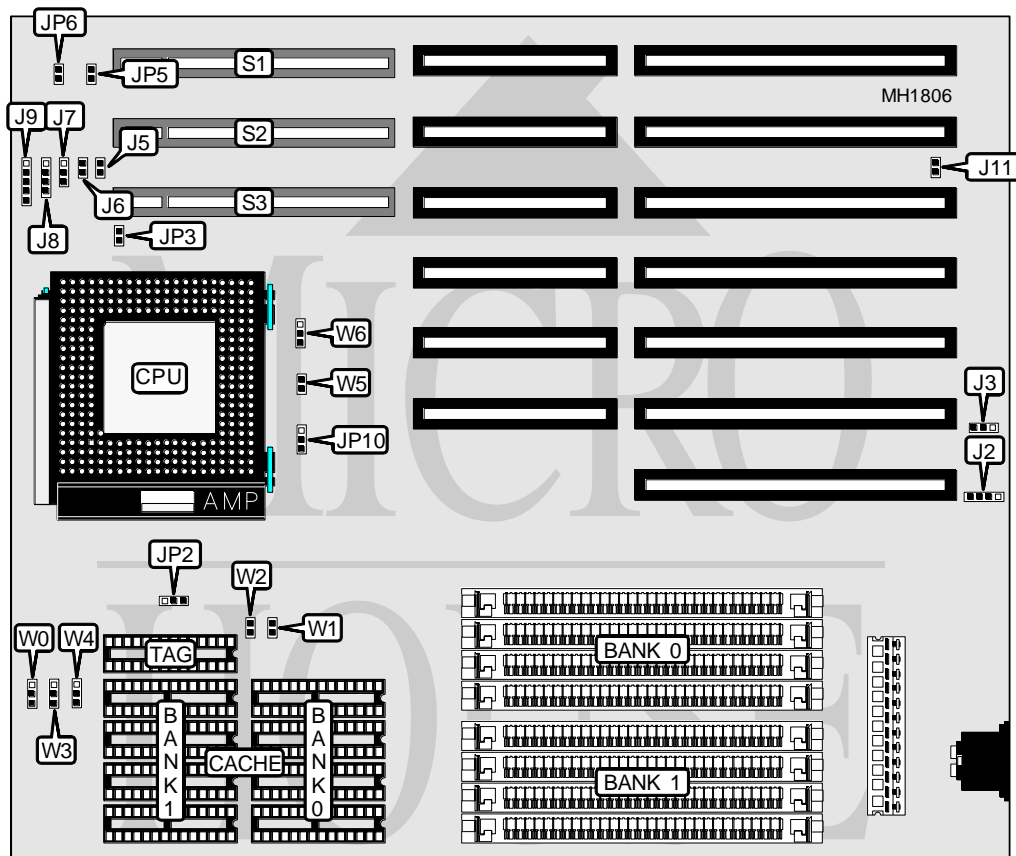


GIGA-BYTE TECHNOLOGY CO., LTD.

G A - 4 8 6 V T

Processor	80486SX/80487SX/CX486S/CX486S2/80486DX/ 80486DX2/Pentium Overdrive
Processor Speed	20/25/33/40/50(internal)/50/66(internal)MHz
Chip Set	UMC
Max. Onboard DRAM	32MB
Cache	64/128/256KB
BIOS	AMI
Dimensions	230mm x 218mm
I/O Options	32-bit VESA local bus slots (3)
NPU Options	None



CONNECTIONS			
Purpose	Location	Purpose	Location
External battery	J2	Power LED & keylock	J9
Turbo LED	J5	32-bit VESA Local bus slot	S1
Reset switch	J6	32-bit VESA Local bus slot	S2
Turbo switch	J7	32-bit VESA Local bus slot	S3
Speaker	J8		

Continued next page...

GIGA-BYTE TECHNOLOGY CO., LTD.

GA - 486VT

... continued from previous page.

USER CONFIGURABLE SETTINGS		
Function	Jumper	Position
í CMOS memory normal operation	J3	pins 1 & 2 closed
CMOS memory clear	J3	pins 2 & 3 closed
í Monitor type select CGA	J11	Closed
Monitor type select all others	J11	Open

DRAM CONFIGURATION		
Size	Bank 0	Bank 1
1MB	(4) 256K x 9	NONE
2MB	(4) 256K x 9	(4) 256K x 9
4MB	(4) 1M x 9	NONE
8MB	(4) 1M x 9	(4) 1M x 9
16MB	(4) 4M x 9	NONE
32MB	(4) 4M x 9	(4) 4M x 9

CACHE CONFIGURATION			
Size	Bank 0	Bank 1	TAG
64KB	(4) 8K x 8	(4) 8K x 8	(1) 8K x 8
128KB	(4) 32K x 8	NONE	(1) 8K x 8
256KB	(4) 32K x 8	(4) 32K x 8	(1) 32K x 8

CACHE JUMPER CONFIGURATION					
Size	W0	W1	W2	W3	W4
64KB	pins 1 & 2	Open	Open	pins 1 & 2	pins 1 & 2
128KB	pins 1 & 2	Closed	Open	pins 2 & 3	pins 2 & 3
256KB	pins 2 & 3	Closed	Closed	pins 1 & 2	pins 2 & 3

Note: Pins designated should be in the closed position.

CPU TYPE CONFIGURATION			
Type	JP3	JP10	W6
80486SX	Open	pins 1 & 2 closed	pins 2 & 3 closed
80487SX	Open	pins 1 & 2 closed	pins 1 & 2 closed
CX486S	Open	pins 1 & 2 closed	pins 2 & 3 closed
CX486S2	Closed	pins 1 & 2 closed	pins 2 & 3 closed
80486DX	Open	pins 1 & 2 closed	pins 1 & 2 closed
80486DX2	Open	pins 1 & 2 closed	pins 1 & 2 closed
Pentium Overdrive	Open	pins 2 & 3 closed	pins 1 & 2 closed

Continued next page...

GIGA-BYTE TECHNOLOGY CO., LTD.
G A - 4 8 6 V T

... continued from previous page.

CPU SPEED CONFIGURATION			
Speed	JP2	JP6	W5
20MHz	pins 1 & 2 closed	Open	Open
25MHz	pins 1 & 2 closed	Open	Open
33MHz	pins 1 & 2 closed	Open	Open
40MHz	pins 2 & 3 closed	Closed	Closed
50i MHz	pins 1 & 2 closed	Open	Open
50MHz	pins 2 & 3 closed	Closed	Open
66i MHz	pins 1 & 2 closed	Open	Open

VESA CONFIGURATION	
Setting	JP5
0 wait states	Open
1 wait state	Closed