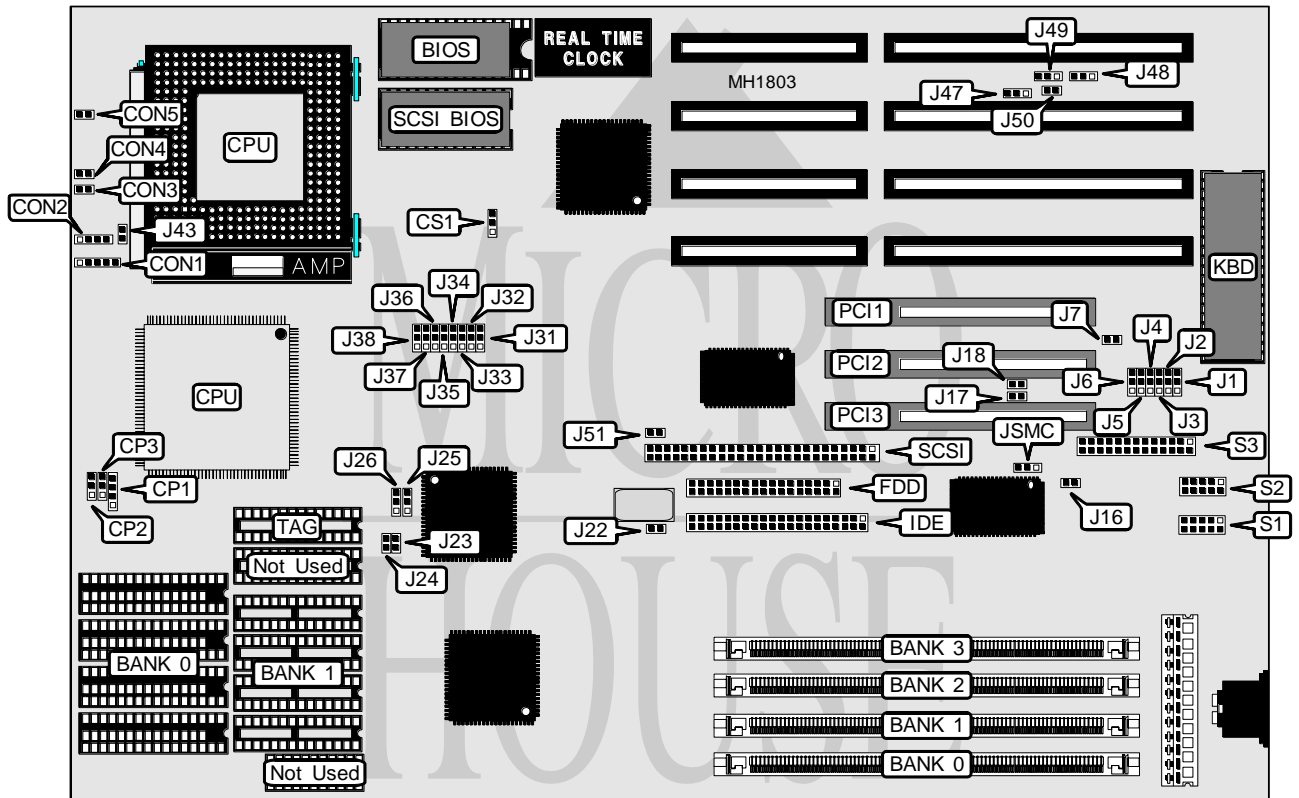


ASUS COMPUTER INTERNATIONAL P C I / I - 4 8 6 S P 3

Processor 80486SX/80487SX/80486DX/ODP486SX/80486DX2/Pentium Overdrive
Processor Speed 25/33/50(internal)/66(internal)MHz
Chip Set Intel
Max. Onboard DRAM 128MB
Cache 128/256/512KB
BIOS Award
Dimensions 330mm x 218mm
I/O Options 32-bit PCI local bus slots (3), floppy drive interface, IDE interface, parallel port, SCSI interface, serial ports (2)
NPU Options None



CONNECTIONS			
Purpose	Location	Purpose	Location
Power LED & keylock	CON1	IDE interface LED	J22
Speaker	CON2	32-bit PCI bus slot	PCI1
Turbo LED	CON3	32-bit PCI bus slot	PCI2
Reset switch	CON4	32-bit PCI bus slot	PCI3
Turbo switch	CON5	Serial port 1	S1
Floppy drive interface	FDD	Serial port 2	S2
IDE interface	IDE	Parallel port	S3
SCSI interface LED	J7	SCSI interface	SCSI

Continued next page...

ASUS COMPUTER INTERNATIONAL

PCI/1-486SP3

... continued from previous page.

USER CONFIGURABLE SETTINGS		
Function	Jumper	Position
í BIOS ROM select (2) 27512	J6	pins 2 & 3 closed
BIOS ROM select (1) 271000	J6	pins 1 & 2 closed
í IDE I/O Channel Ready disabled	J16	Open
IDE I/O Channel Ready enabled	J16	Closed
í Factory configured - do not alter	J23	Closed
í Factory configured - do not alter	J24	Closed
í Secondary cache speed 0 wait states	J33	pins 1 & 2 closed
Secondary cache speed 1 wait state	J33	pins 2 & 3 closed
í Factory configured - do not alter	J34	pins 2 & 3 closed
í Factory configured - do not alter	J35	pins 1 & 2 closed
í Secondary cache enabled	J36	pins 1 & 2 closed
Secondary cache disabled	J36	pins 2 & 3 closed
í Factory configured - do not alter	J47	pins 2 & 3 closed
í BIOS type select EPROM	J48	pins 2 & 3 closed
BIOS type select Flash BIOS	J48	pins 1 & 2 closed
í Onboard SCSI interface enabled	J51	Open
Onboard SCSI interface disabled	J51	Closed
í Floppy, IDE, Parallel, and Serial ports enabled	JSMC	pins 1 & 2 closed
Floppy, IDE, Parallel, and Serial ports disabled	JSMC	pins 2 & 3 closed

ONBOARD SCSI INTERFACE CONFIGURATION		
Onboard SCSI	J17	J18
Present (PCI2 is slave)	Open	Open
Absent (PCI2 is master)	Closed	Closed

INTERRUPT IRQ5 CONFIGURATION	
Bus	J3
ISA	pins 1 & 2 closed
PCI (INT A)	pins 2 & 3 closed

INTERRUPT IRQ9 CONFIGURATION	
Bus/Device	J1 & J2
ISA	J1/pin 1 & J2/pin 1 closed
PCI (INT D)	J1/pin 3 & J2/pin 3 closed
SCSI	J1/pin 2 & J2/pin 2 closed

INTERRUPT IRQ11 CONFIGURATION	
Bus	J4
ISA	pins 1 & 2 closed
PCI (INT B)	pins 2 & 3 closed

Note: The PCI bus can have only one IRQ on INT B (i.e. you can use IRQ11 or IRQ14 but not both).

Continued next page...

ASUS COMPUTER INTERNATIONAL

PCI/I-486SP3

... continued from previous page.

INTERRUPT IRQ14 CONFIGURATION		
Bus	J49	J50
ISA	pins 2 & 3 closed	open
PCI (INT A)	pins 1 & 2 closed	open
PCI (INT B)	open	closed

Note: The PCI bus can have only one IRQ on INT A (i.e. you can use IRQ5 or IRQ14 but not both).
The PCI bus can have only one IRQ on INT B (i.e. you can use IRQ11 or IRQ14 but not both).

INTERRUPT IRQ15 CONFIGURATION	
Bus	J5
ISA	pins 1 & 2 closed
PCI (INT C)	pins 2 & 3 closed

CACHE CONFIGURATION			
Size	Bank 0	Bank 1	TAG
128KB	(4) 32K x 8	NONE	(1) 8K x 8
256KB	(4) 32K x 8	(4) 32K x 8	(1) 32K x 8
512KB	(4) 128K x 8	NONE	(1) 32K x 8

CACHE JUMPER CONFIGURATION				
Size	J25	J26	J37	J38
128KB	pins 2 & 3 closed	pins 2 & 3 closed	pins 1 & 2 closed	pins 2 & 3 closed
256KB	pins 2 & 3 closed	pins 1 & 2 closed	pins 2 & 3 closed	pins 1 & 2 closed
512KB	pins 1 & 2 closed	pins 1 & 2 closed	pins 1 & 2 closed	pins 1 & 2 closed

Note: Pins designated should be in the closed position.

CPU TYPE CONFIGURATION					
CPU	Socket	CP1	CP2	CP3	J43
80486SX	PGA	pins 2 & 3	pins 1 & 2	Open	Closed
80486SX	PQFP	1 & 2 and 3 & 4	pins 2 & 3	pins 2 & 3	Closed
80487SX	PGA	1 & 2 and 3 & 4	pins 2 & 3	pins 2 & 3	Closed
80486DX	PGA	1 & 2 and 3 & 4	pins 1 & 2	pins 1 & 2	Closed
ODP486SX	PGA	1 & 2 and 3 & 4	pins 2 & 3	pins 2 & 3	Closed
80486DX2	PGA	1 & 2 and 3 & 4	pins 1 & 2	pins 1 & 2	Closed
Pentium Overdrive	PGA	1 & 2 and 3 & 4	pins 2 & 3	pins 2 & 3	Open

Note: Pins designated should be in the closed position.

CPU SPEED CONFIGURATION			
Speed	CS1	J31	J32
25MHz	pins 2 & 3 closed	pins 2 & 3 closed	pins 2 & 3 closed
33MHz	pins 1 & 2 closed	pins 1 & 2 closed	pins 2 & 3 closed
50i MHz	pins 2 & 3 closed	pins 2 & 3 closed	pins 2 & 3 closed
66i MHz	pins 1 & 2 closed	pins 1 & 2 closed	pins 2 & 3 closed

Continued next page...

ASUS COMPUTER INTERNATIONAL

PCI/I-486SP3

... continued from previous page.

DRAM CONFIGURATION				
Size	Bank 0	Bank 1	Bank 2	Bank 3
2MB	(1) 256K x 36	(1) 256K x 36	NONE	NONE
4MB	(1) 256K x 36	(1) 256K x 36	(1) 256K x 36	(1) 256K x 36
4MB	(1) 512K x 36	(1) 512K x 36	NONE	NONE
6MB	(1) 256K x 36	(1) 256K x 36	(1) 512K x 36	(1) 512K x 36
6MB	(1) 512K x 36	(1) 512K x 36	(1) 256K x 36	(1) 256K x 36
8MB	(1) 512K x 36	(1) 512K x 36	(1) 512K x 36	(1) 512K x 36
8MB	(1) 1M x 36	(1) 1M x 36	NONE	NONE
10MB	(1) 256K x 36	(1) 256K x 36	(1) 1M x 36	(1) 1M x 36
10MB	(1) 1M x 36	(1) 1M x 36	(1) 256K x 36	(1) 256K x 36
12MB	(1) 512K x 36	(1) 512K x 36	(1) 1M x 36	(1) 1M x 36
12MB	(1) 1M x 36	(1) 1M x 36	(1) 512K x 36	(1) 512K x 36
16MB	(1) 1M x 36	(1) 1M x 36	(1) 1M x 36	(1) 1M x 36
16MB	(1) 2M x 36	(1) 2M x 36	NONE	NONE
18MB	(1) 256K x 36	(1) 256K x 36	(1) 2M x 36	(1) 2M x 36
18MB	(1) 2M x 36	(1) 2M x 36	(1) 256K x 36	(1) 256K x 36
20MB	(1) 512K x 36	(1) 512K x 36	(1) 2M x 36	(1) 2M x 36
20MB	(1) 2M x 36	(1) 2M x 36	(1) 512K x 36	(1) 512K x 36
24MB	(1) 1M x 36	(1) 1M x 36	(1) 2M x 36	(1) 2M x 36
24MB	(1) 2M x 36	(1) 2M x 36	(1) 1M x 36	(1) 1M x 36
32MB	(1) 2M x 36	(1) 2M x 36	(1) 2M x 36	(1) 2M x 36
32MB	(1) 4M x 36	(1) 4M x 36	NONE	NONE
34MB	(1) 256K x 36	(1) 256K x 36	(1) 4M x 36	(1) 4M x 36
34MB	(1) 4M x 36	(1) 4M x 36	(1) 256K x 36	(1) 256K x 36
36MB	(1) 512K x 36	(1) 512K x 36	(1) 4M x 36	(1) 4M x 36
36MB	(1) 4M x 36	(1) 4M x 36	(1) 512K x 36	(1) 512K x 36
40MB	(1) 1M x 36	(1) 1M x 36	(1) 4M x 36	(1) 4M x 36
40MB	(1) 4M x 36	(1) 4M x 36	(1) 1M x 36	(1) 1M x 36
48MB	(1) 2M x 36	(1) 2M x 36	(1) 4M x 36	(1) 4M x 36
48MB	(1) 4M x 36	(1) 4M x 36	(1) 2M x 36	(1) 2M x 36
64MB	(1) 4M x 36	(1) 4M x 36	(1) 4M x 36	(1) 4M x 36
64MB	(1) 8M x 36	(1) 8M x 36	NONE	NONE
66MB	(1) 256K x 36	(1) 256K x 36	(1) 8M x 36	(1) 8M x 36
66MB	(1) 8M x 36	(1) 8M x 36	(1) 256K x 36	(1) 256K x 36
68MB	(1) 512K x 36	(1) 512K x 36	(1) 8M x 36	(1) 8M x 36
68MB	(1) 8M x 36	(1) 8M x 36	(1) 512K x 36	(1) 512K x 36
72MB	(1) 1M x 36	(1) 1M x 36	(1) 8M x 36	(1) 8M x 36
72MB	(1) 8M x 36	(1) 8M x 36	(1) 1M x 36	(1) 1M x 36
80MB	(1) 2M x 36	(1) 2M x 36	(1) 8M x 36	(1) 8M x 36
80MB	(1) 8M x 36	(1) 8M x 36	(1) 2M x 36	(1) 2M x 36
96MB	(1) 4M x 36	(1) 4M x 36	(1) 8M x 36	(1) 8M x 36
96MB	(1) 8M x 36	(1) 8M x 36	(1) 4M x 36	(1) 4M x 36
128MB	(1) 8M x 36	(1) 8M x 36	(1) 8M x 36	(1) 8M x 36