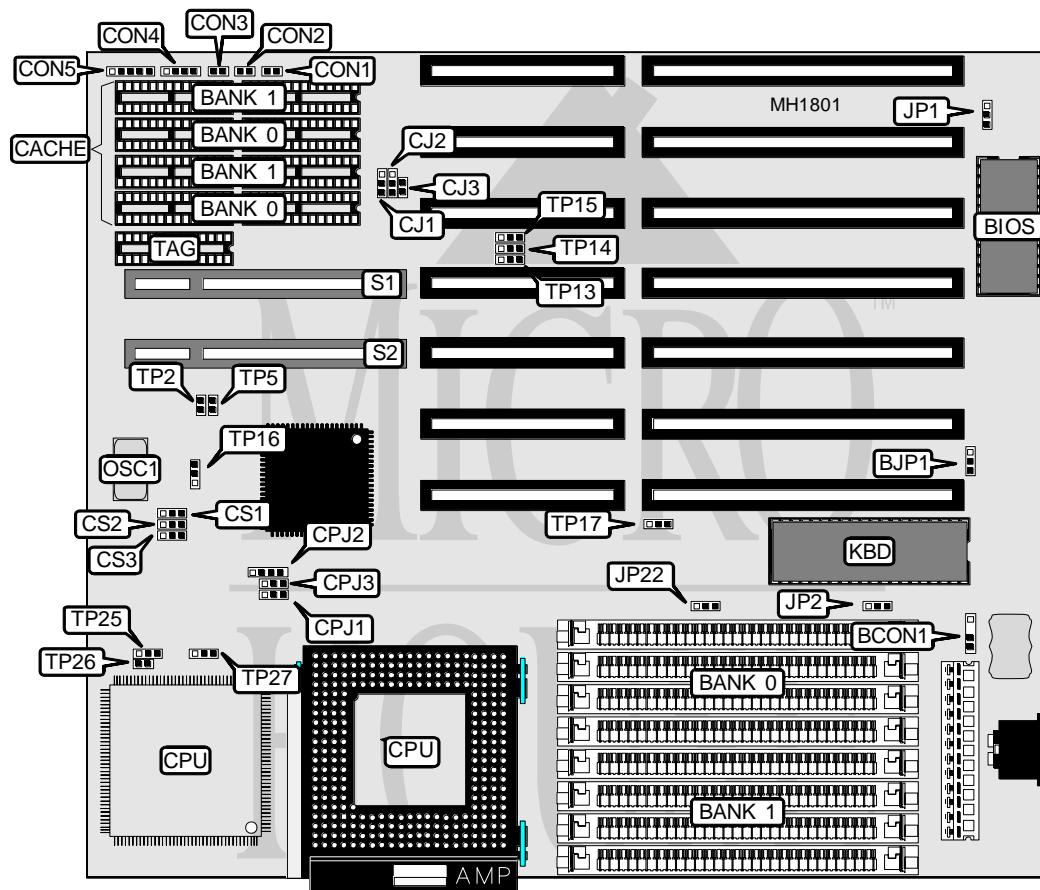


ASUS COMPUTER INTERNATIONAL

VL/ISA-486SV2 VERSION 1.7

| | |
|--------------------------|---|
| Processor | 80486SX/80487SX/80486DX/ODP486SX/ 80486DX2 |
| Processor Speed | 20/25/33/40/50(internal)/50/66(internal)MHz |
| Chip Set | SIS |
| Max. Onboard DRAM | 32MB |
| Cache | 64/128/256KB |
| BIOS | AMI |
| Dimensions | 246mm x 221mm |
| I/O Options | 32-bit VESA local bus slots (2) |
| NPU Options | None |



| CONNECTIONS | | | |
|------------------|----------|----------------------------|----------|
| Purpose | Location | Purpose | Location |
| External battery | BCON1 | Speaker | CON4 |
| Turbo switch | CON1 | Power LED & keylock | CON5 |
| Turbo LED | CON2 | 32-bit VESA local bus slot | S1 |
| Reset switch | CON3 | 32-bit VESA local bus slot | S2 |

Continued next page...

ASUS COMPUTER INTERNATIONAL

VL/ISA-486SV2 VERSION 1.7

... continued from previous page.

| USER CONFIGURABLE SETTINGS | | |
|--|---------------|-------------------|
| Function | Jumper/Switch | Position |
| í CMOS memory normal operation (Internal Battery) | BJP1 | pins 1 & 2 closed |
| CMOS memory normal operation (External Battery) | BJP1 | pins 2 & 3 closed |
| CMOS memory clear | BJP1 | Open |
| í Factory configured - do not alter | JP1 | pins 2 & 3 closed |
| í Monitor type select EGA, Mono, VGA, or any other | JP2 | pins 1 & 2 closed |
| Monitor type select CGA | JP2 | pins 2 & 3 closed |
| í Factory configured - do not alter | TP2 | Closed |
| í Factory configured - do not alter | TP5 | Open |
| í Factory configured - do not alter | TP13 | pins 1 & 2 closed |
| í Factory configured - do not alter | TP14 | pins 1 & 2 closed |
| í Factory configured - do not alter | TP15 | pins 1 & 2 closed |
| í Factory configured - do not alter | TP16 | pins 1 & 2 closed |
| í Factory configured - do not alter | TP17 | pins 2 & 3 closed |
| í Factory configured - do not alter | TP25 | pins 1 & 2 closed |
| í Factory configured - do not alter | TP26 | Open |
| í Factory configured - do not alter | TP27 | pins 1 & 2 closed |

| DRAM CONFIGURATION | | |
|--------------------|--------------|--------------|
| Size | Bank 0 | Bank 1 |
| 1MB | (4) 256K x 9 | NONE |
| 2MB | (4) 256K x 9 | (4) 256K x 9 |
| 4MB | (4) 1M x 9 | NONE |
| 8MB | (4) 1M x 9 | (4) 1M x 9 |
| 16MB | (4) 4M x 9 | NONE |
| 20MB | (4) 1M x 9 | (4) 4M x 9 |
| 32MB | (4) 4M x 9 | (4) 4M x 9 |

| CACHE CONFIGURATION | | | |
|---------------------|-------------|-------------|-------------|
| Size | Bank 0 | Bank 1 | TAG |
| 64KB | (4) 8K x 8 | (4) 8K x 8 | (1) 8K x 8 |
| 128KB | (4) 32K x 8 | NONE | (1) 8K x 8 |
| 256KB | (4) 32K x 8 | (4) 32K x 8 | (1) 32K x 8 |

| CACHE JUMPER CONFIGURATION | | | |
|----------------------------|-------------------|-------------------|--------|
| Size | CJ1 | CJ2 | CJ3 |
| 64KB | pins 2 & 3 closed | pins 2 & 3 closed | Open |
| 128KB | pins 1 & 2 closed | Open | Closed |
| 256KB | pins 1 & 2 closed | pins 1 & 2 closed | Open |

Continued next page...

ASUS COMPUTER INTERNATIONAL

VL/ISA-486SV2 VERSION 1.7

... continued from previous page.

| CPU TYPE CONFIGURATION | | | | |
|------------------------|---------|-------------------|-----------------------------|-------------------|
| Type | Package | CPJ1 | CPJ2 | CPJ3 |
| 80486SX | PGA | Open | pins 2 & 3 closed | pins 2 & 3 closed |
| 80486SX | PQFP | pins 1 & 2 closed | pins 1 & 2 and 3 & 4 closed | pins 1 & 2 closed |
| 80487SX | PGA | pins 1 & 2 closed | pins 1 & 2 and 3 & 4 closed | pins 1 & 2 closed |
| 80486DX | PGA | pins 2 & 3 closed | pins 1 & 2 and 3 & 4 closed | pins 2 & 3 closed |
| ODP486SX | PGA | pins 1 & 2 closed | pins 1 & 2 and 3 & 4 closed | pins 1 & 2 closed |
| 80486DX2 | PGA | pins 2 & 3 closed | pins 1 & 2 and 3 & 4 closed | pins 2 & 3 closed |

| CPU TYPE CONFIGURATION | |
|------------------------|-------------------|
| Type | JP22 |
| AMD | pins 2 & 3 closed |
| Intel | pins 2 & 3 closed |
| Cyrix | pins 1 & 2 closed |

| CPU SPEED CONFIGURATION | | | | |
|-------------------------|-------|-------------------|-------------------|-------------------|
| Speed | OSC1 | CS1 | CS2 | CS3 |
| 20MHz | 20MHz | pins 1 & 2 closed | pins 1 & 2 closed | pins 1 & 2 closed |
| 25MHz | 25MHz | pins 1 & 2 closed | pins 1 & 2 closed | pins 2 & 3 closed |
| 33MHz | 33MHz | pins 2 & 3 closed | pins 2 & 3 closed | pins 2 & 3 closed |
| 40MHz | 40MHz | pins 1 & 2 closed | pins 2 & 3 closed | pins 2 & 3 closed |
| 50iMHz | 25MHz | pins 1 & 2 closed | pins 1 & 2 closed | pins 2 & 3 closed |
| 50MHz | 50MHz | pins 2 & 3 closed | pins 1 & 2 closed | pins 1 & 2 closed |
| 66iMHz | 33MHz | pins 2 & 3 closed | pins 2 & 3 closed | pins 2 & 3 closed |