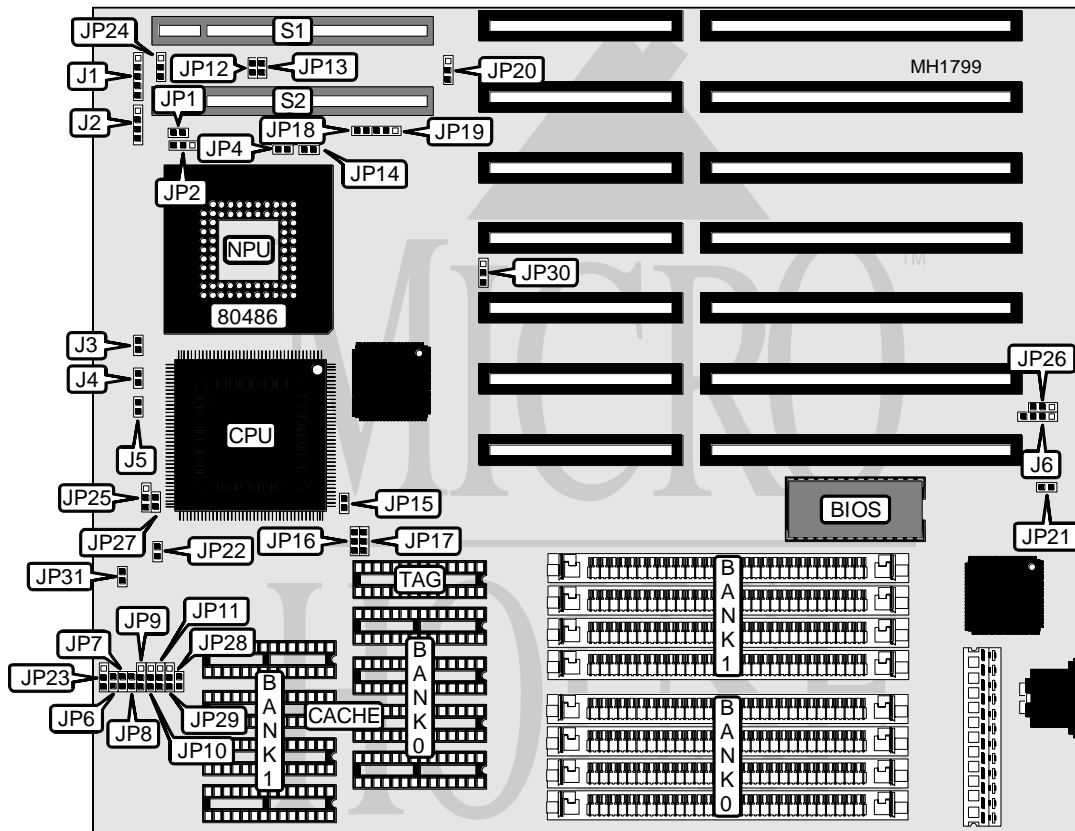


DATAEXPERT CORPORATION

OPTI-495XLC 3/486WB CACHE

Processor	80386DX/80486SX/80486DX/80486DX2/Pentium Overdrive
Processor Speed	25/33/40/50(internal)/50/66(internal)/MHz
Chip Set	OPTi
Max. Onboard DRAM	64MB
Cache	64/128/256KB
BIOS	AMI
Dimensions	230mm x 218mm
I/O Options	32-bit VESA local bus slots (2)
NPU Options	80387DX



CONNECTIONS			
Purpose	Location	Purpose	Location
Power LED & keylock	J1	Turbo LED	J5
Speaker	J2	External battery	J6
Turbo switch	J3	32-bit VESA Local bus slot	S1
Reset switch	J4	32-bit VESA Local bus slot	S2

Continued next page...

DATAEXPERT CORPORATION

OPTI-495XLC 3/486WB CACHE

... continued from previous page.

USER CONFIGURABLE SETTINGS		
Function	Jumper	Position
í CMOS memory normal operation (Internal battery)	J6	pins 2 & 3 closed
CMOS memory clear	J6	pins 3 & 4 closed
í Monitor type select color	JP21	Closed
Monitor type select monochrome	JP21	Open
í Factory configured - do not alter	JP23	N/A
í Battery type select - NI-CD recharge	JP26	pins 2 & 3 closed
Battery type select - Lithium discharge	JP26	pins 1 & 2 closed

DRAM CONFIGURATION		
Size	Bank 0	Bank 1
1MB	(4) 256K x 9	NONE
2MB	(4) 256K x 9	(4) 256K x 9
4MB	(4) 1M x 9	NONE
5MB	(4) 256K x 9	(4) 1M x 9
8MB	(4) 1M x 9	(4) 1M x 9
16MB	(4) 4M x 9	NONE
17MB	(4) 256K x 9	(4) 4M x 9
20MB	(4) 1M x 9	(4) 4M x 9
20MB	(4) 4M x 9	(4) 1M x 9
32MB	(4) 4M x 9	(4) 4M x 9
64MB	(4) 16M x 9	NONE

CACHE CONFIGURATION			
Size	Bank 0	Bank 1	TAG
64KB	(4) 8K x 8	(4) 8K x 8	(1) 8K x 8
128KB	(4) 32K x 8	NONE	(1) 8K x 8
256KB	(4) 32K x 8	(4) 32K x 8	(1) 32K x 8

CACHE JUMPER CONFIGURATION				
Size	JP10	JP11	JP16	JP17
64KB	pins 2 & 3 closed	pins 2 & 3 closed	Open	Open
128KB	pins 1 & 2 closed	pins 1 & 2 closed	Closed	Open
256KB	pins 2 & 3 closed	pins 2 & 3 closed	Closed	Closed

Continued next page...

DATAEXPERT CORPORATION

OPTI-495XLC 3/486WB CACHE

... continued from previous page.

80386/80486 CONFIGURATION					
Type	JP14	JP15	JP20	JP25	JP30
80386	Open	Open	pins 2 & 3	pins 1 & 2	pins 2 & 3
80486	Closed	Closed	pins 1 & 2	pins 2 & 3	pins 1 & 2

Note: Pins designated should be in the closed position.

CPU TYPE CONFIGURATION			
Type	JP2	JP18	JP19
80486SX (PGA)	Open	Open	pins 2 & 3 closed
80486SX (PQFP)	Open	Closed	pins 2 & 3 closed
80486DX	pins 1 & 2 closed	Closed	pins 1 & 2 closed
80486DX2	pins 1 & 2 closed	Closed	pins 1 & 2 closed
Pentium Overdrive	pins 2 & 3 closed	Closed	pins 1 & 2 closed

CPU SPEED CONFIGURATION					
Speed	JP6	JP7	JP8	JP9	JP22
80386DX/33MHz	Open	Open	Closed	pins 1 & 2	Open
80486SX/25MHz	Open	Open	Open	pins 1 & 2	Closed
80486SX/33MHz	Open	Open	Closed	pins 1 & 2	Open
80486DX/25MHz	Open	Open	Open	pins 1 & 2	Closed
80486DX/40MHz	Open	Closed	Closed	pins 1 & 2	Open
80486DX/50i MHz	Open	Open	Open	pins 1 & 2	Closed
80486DX/50MHz	Open	Closed	Open	pins 1 & 2	Open
80486DX/66i MHz	Open	Open	Closed	pins 1 & 2	Open

Note: Pins designated should be in the closed position.