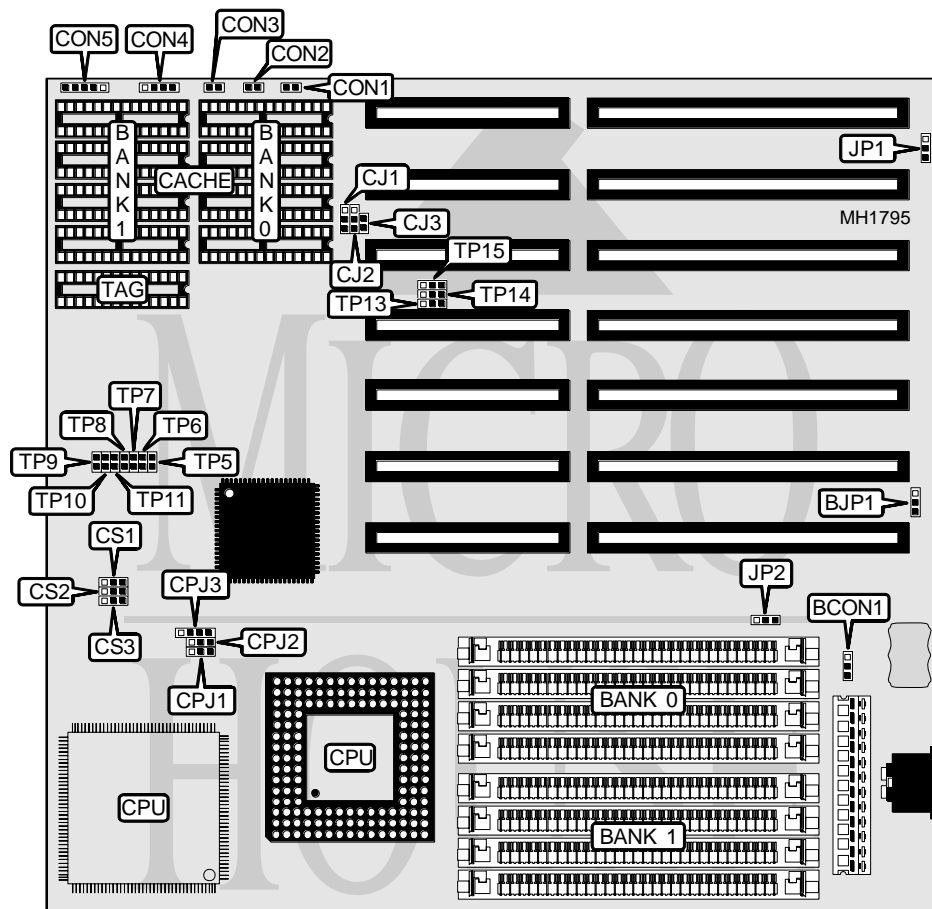


# ASUS COMPUTER INTERNATIONAL ISA-486SV2 (VERSION 2.5)

**Processor** 80486SX/80487SX/80486DX/ODP486SX/80486DX2  
**Processor Speed** 20/25/33/40/50(internal)/50/66(internal)MHz  
**Chip Set** SIS  
**Max. Onboard DRAM** 32MB  
**Cache** 64/128/256KB  
**BIOS** AMI  
**Dimensions** 230mm x 218mm  
**I/O Options** None  
**NPU Options** None



CONNECTIONS			
Purpose	Location	Purpose	Location
External battery	BCON1	Reset switch	CON3
Turbo switch	CON1	Speaker	CON4
Turbo LED	CON2	Power LED & keylock	CON5

Continued next page...

# ASUS COMPUTER INTERNATIONAL

## ISA-486SV2 (VERSION 2.5)

... continued from previous page.

USER CONFIGURABLE SETTINGS		
Function	Jumper	Position
í Battery select internal	BJP1	Closed
Battery select external	BJP1	Open
í Monitor type select monochrome/color	JP2	pins 1 & 2 closed
Monitor type select CGA	JP2	pins 2 & 3 closed
í Factory configured - do not alter	TP5	N/A
í Factory configured - do not alter	TP6	N/A
í Factory configured - do not alter	TP7	N/A
í Factory configured - do not alter	TP8	N/A
í Factory configured - do not alter	TP9	N/A
í Factory configured - do not alter	TP10	N/A
í Factory configured - do not alter	TP11	N/A
í Factory configured - do not alter	TP13	N/A
í Factory configured - do not alter	TP14	N/A
í Factory configured - do not alter	TP15	N/A

DRAM CONFIGURATION		
Size	Bank 0	Bank 1
1MB	(4) 256K x 9	NONE
2MB	(4) 256K x 9	(4) 256K x 9
4MB	(4) 1M x 9	NONE
8MB	(4) 1M x 9	(4) 1M x 9
16MB	(4) 4M x 9	NONE
20MB	(4) 1M x 9	(4) 4M x 9
32MB	(4) 4M x 9	(4) 4M x 9

CACHE CONFIGURATION			
Size	Bank 0	Bank 1	TAG
64KB	(4) 8K x 8	(4) 8K x 8	(1) 8K x 8
128KB	(4) 32K x 8	NONE	(1) 8K x 8
256KB	(4) 32K x 8	(4) 32K x 8	(1) 32K x 8

CACHE JUMPER CONFIGURATION			
Size	CJ1	CJ2	CJ3
64KB	pins 2 & 3 closed	pins 2 & 3 closed	Open
128KB	pins 1 & 2 closed	Open	Closed
256KB	pins 1 & 2 closed	pins 1 & 2 closed	Open

CPU TYPE CONFIGURATION			
Type	CPJ1	CPJ2	CPJ3
80486SX	Open	pins 1 & 2 closed	pins 2 & 3 closed
80487SX	pins 1 & 2 closed	pins 1 & 2 and 3 & 4	pins 1 & 2 closed
80486DX	pins 2 & 3 closed	pins 1 & 2 and 3 & 4	pins 2 & 3 closed
ODP486SX	pins 1 & 2 closed	pins 1 & 2 and 3 & 4	pins 1 & 2 closed
80486DX2	pins 2 & 3 closed	pins 1 & 2 and 3 & 4	pins 2 & 3 closed

Note: Pins designated should be in the closed position.

*Continued next page...*

## ASUS COMPUTER INTERNATIONAL ISA-486SV2 (VERSION 2.5)

... continued from previous page.

CPU SPEED CONFIGURATION				
Speed	CS1	CS2	CS3	JP1
20MHz	pins 1 & 2 closed	pins 2 & 3 closed	pins 2 & 3 closed	pins 2 & 3 closed
25MHz	pins 1 & 2 closed	pins 1 & 2 closed	pins 2 & 3 closed	pins 1 & 2 closed
33MHz	pins 2 & 3 closed	pins 2 & 3 closed	pins 2 & 3 closed	pins 1 & 2 closed
40MHz	pins 1 & 2 closed	pins 2 & 3 closed	pins 2 & 3 closed	pins 1 & 2 closed
50MHz	pins 1 & 2 closed	pins 1 & 2 closed	pins 2 & 3 closed	pins 1 & 2 closed
50MHz	pins 2 & 3 closed	pins 1 & 2 closed	pins 1 & 2 closed	pins 1 & 2 closed
66MHz	pins 2 & 3 closed	pins 2 & 3 closed	pins 2 & 3 closed	pins 1 & 2 closed