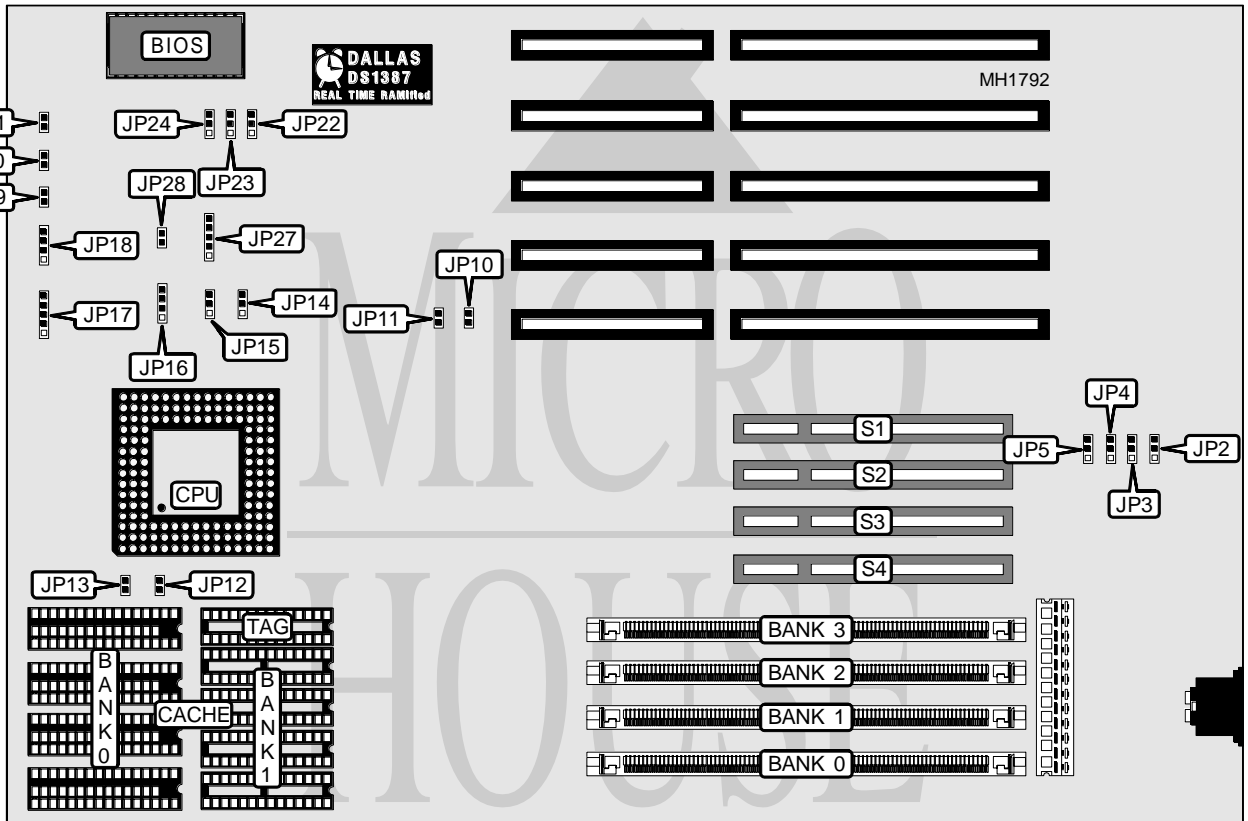


GENOA SYSTEMS CORPORATION TURBOEXPRESS 486 PCI

Processor	80486SX/80487SX/80486DX/ODP486SX/80486DX2/Pentium Overdrive
Processor Speed	25/33/50(internal)/66(internal)MHz
Chip Set	Intel Saturn
Max. Onboard DRAM	128MB
Cache	128/256/512KB
BIOS	AMI
Dimensions	330mm x 218mm
I/O Options	32-bit PCI local bus slots (4)
NPU Options	None



CONNECTIONS			
Purpose	Location	Purpose	Location
Power LED & keylock	JP17	32-bit PCI Local bus slot	S1
Speaker	JP18	32-bit PCI Local bus slot	S2
Reset switch	JP19	32-bit PCI Local bus slot	S3
Turbo LED	JP20	32-bit PCI Local bus slot	S4
Turbo switch	JP21		

Continued next page...

GENOA SYSTEMS CORPORATION

TURBOEXPRESS 486 PCI

... continued from previous page.

USER CONFIGURABLE SETTINGS		
Function	Jumper	Position
Cache enabled	JP4	pins 2 & 3 closed
Cache disabled	JP4	pins 1 & 2 closed

DRAM CONFIGURATION				
Size	Bank 0	Bank 1	Bank 2	Bank 3
2MB	(1) 1M x 36	(1) 1M x 36	NONE	NONE
4MB	(1) 1M x 36	(1) 1M x 36	(1) 1M x 36	(1) 1M x 36
4MB	(1) 2M x 36	(1) 2M x 36	NONE	NONE
6MB	(1) 1M x 36	(1) 1M x 36	(1) 2M x 36	(1) 2M x 36
6MB	(1) 2M x 36	(1) 2M x 36	(1) 1M x 36	(1) 1M x 36
8MB	(1) 2M x 36	(1) 2M x 36	(1) 2M x 36	(1) 2M x 36
8MB	(1) 4M x 36	(1) 4M x 36	NONE	NONE
10MB	(1) 1M x 36	(1) 1M x 36	(1) 4M x 36	(1) 4M x 36
10MB	(1) 4M x 36	(1) 4M x 36	(1) 1M x 36	(1) 1M x 36
12MB	(1) 2M x 36	(1) 2M x 36	(1) 4M x 36	(1) 4M x 36
12MB	(1) 4M x 36	(1) 4M x 36	(1) 2M x 36	(1) 2M x 36
16MB	(1) 4M x 36	(1) 4M x 36	(1) 4M x 36	(1) 4M x 36
16MB	(1) 8M x 36	(1) 8M x 36	NONE	NONE
18MB	(1) 1M x 36	(1) 1M x 36	(1) 8M x 36	(1) 8M x 36
18MB	(1) 8M x 36	(1) 8M x 36	(1) 1M x 36	(1) 1M x 36
20MB	(1) 2M x 36	(1) 2M x 36	(1) 8M x 36	(1) 8M x 36
20MB	(1) 8M x 36	(1) 8M x 36	(1) 2M x 36	(1) 2M x 36
24MB	(1) 4M x 36	(1) 4M x 36	(1) 8M x 36	(1) 8M x 36
24MB	(1) 8M x 36	(1) 8M x 36	(1) 4M x 36	(1) 4M x 36
32MB	(1) 8M x 36	(1) 8M x 36	(1) 8M x 36	(1) 8M x 36
32MB	(1) 16M x 36	(1) 16M x 36	NONE	NONE
34MB	(1) 1M x 36	(1) 1M x 36	(1) 16M x 36	(1) 16M x 36
34MB	(1) 16M x 36	(1) 16M x 36	(1) 1M x 36	(1) 1M x 36
36MB	(1) 16M x 36	(1) 16M x 36	(1) 2M x 36	(1) 2M x 36
36MB	(1) 2M x 36	(1) 2M x 36	(1) 16M x 36	(1) 16M x 36
40MB	(1) 4M x 36	(1) 4M x 36	(1) 16M x 36	(1) 16M x 36
40MB	(1) 16M x 36	(1) 16M x 36	(1) 4M x 36	(1) 4M x 36
48MB	(1) 8M x 36	(1) 8M x 36	(1) 16M x 36	(1) 16M x 36
48MB	(1) 16M x 36	(1) 16M x 36	(1) 8M x 36	(1) 8M x 36
64MB	(1) 16M x 36	(1) 16M x 36	(1) 16M x 36	(1) 16M x 36
64MB	(1) 32M x 36	(1) 32M x 36	NONE	NONE
66MB	(1) 1M x 36	(1) 1M x 36	(1) 32M x 36	(1) 32M x 36
66MB	(1) 32M x 36	(1) 32M x 36	(1) 1M x 36	(1) 1M x 36
68MB	(1) 2M x 36	(1) 2M x 36	(1) 32M x 36	(1) 32M x 36
68MB	(1) 32M x 36	(1) 32M x 36	(1) 2M x 36	(1) 2M x 36
72MB	(1) 4M x 36	(1) 4M x 36	(1) 32M x 36	(1) 32M x 36
72MB	(1) 32M x 36	(1) 32M x 36	(1) 4M x 36	(1) 4M x 36

Continued next page...

GENOA SYSTEMS CORPORATION

TURBOEXPRESS 486 PCI

... continued from previous page.

DRAM CONFIGURATION (CONT.)				
Size	Bank 0	Bank 1	Bank 2	Bank 3
80MB	(1) 8M x 36	(1) 8M x 36	(1) 32M x 36	(1) 32M x 36
80MB	(1) 32M x 36	(1) 32M x 36	(1) 8M x 36	(1) 8M x 36
96MB	(1) 16M x 36	(1) 16M x 36	(1) 32M x 36	(1) 32M x 36
96MB	(1) 32M x 36	(1) 32M x 36	(1) 16M x 36	(1) 16M x 36
128MB	(1) 32M x 36	(1) 32M x 36	(1) 32M x 36	(1) 32M x 36

CACHE CONFIGURATION			
Size	Bank 0	Bank 1	TAG
128KB	(4) 32K x 8	NONE	(1) 8K x 8
256KB	(4) 32K x 8	(4) 32K x 8	(1) 32K x 8
512KB	(4) 128K x 8	NONE	(1) 32K x 8

CACHE JUMPER CONFIGURATION				
Size	JP2	JP3	JP12	JP13
128KB	pins 1 & 2 closed	pins 2 & 3 closed	Open	Open
256KB	pins 2 & 3 closed	pins 1 & 2 closed	Closed	Open
512KB	pins 2 & 3 closed	pins 2 & 3 closed	Closed	Closed

CPU TYPE CONFIGURATION			
Type	JP14	JP15	JP16
80486SX	pins 1 & 2 closed	Open	pins 2 & 3 closed
80487SX	pins 1 & 2 closed	pins 2 & 3 closed	Closed
80486DX	pins 1 & 2 closed	pins 1 & 2 closed	Closed
ODP486SX	pins 1 & 2 closed	pins 2 & 3 closed	Closed
80486DX2	pins 1 & 2 closed	pins 1 & 2 closed	Closed
Pentium Overdrive	pins 2 & 3 closed	pins 2 & 3 closed	Closed

CPU SPEED CONFIGURATION			
Speed	JP5	JP10	JP11
25MHz	pins 1 & 2 closed	Open	Closed
33MHz	pins 2 & 3 closed	Closed	Open
50i MHz	pins 1 & 2 closed	Open	Closed
66i MHz	pins 2 & 3 closed	Closed	Open

PCI INTERRUPT SELECT			
Setting	JP22	JP23	JP24
í IRQ15	pins 2 & 3 closed	pins 1 & 2 closed	pins 1 & 2 closed
IRQ11	pins 1 & 2 closed	pins 2 & 3 closed	pins 1 & 2 closed
IRQ5	pins 1 & 2 closed	pins 1 & 2 closed	pins 2 & 3 closed
None	pins 1 & 2 closed	pins 1 & 2 closed	pins 1 & 2 closed

Note: There are three jumpers to be set for the PCI interrupt connection. When you connect an ISA IRQ to the PCI bus, that IRQ is unavailable to the ISA bus.

Continued next page...

GENOA SYSTEMS CORPORATION

TURBOEXPRESS 486PCI

... continued from previous page.

PCI IDE IRQ14 CONNECTION		
Type	JP27	JP28
ISA IDE controller	pins 3 & 4 closed	Closed
PCI IDE controller (edge trigger)	pins 4 & 5 closed	Open
PCI IDE controller (level trigger)	pins 1 & 2 closed	Open