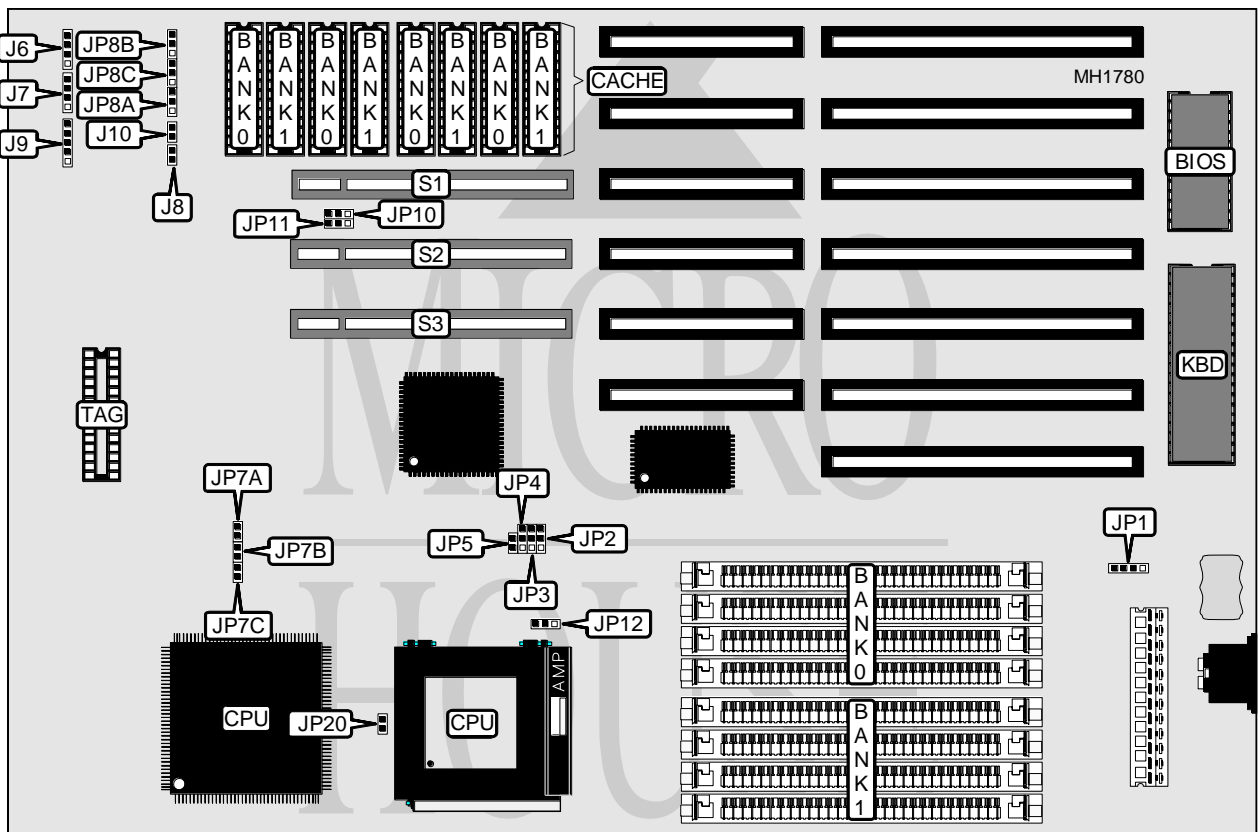


INFORMTECH INTERNATIONAL, INC.

IT486SMVG MINI

Processor	80486SX/80487SX/CX486DX/80486DX/ODP486SX CX486DX2/80486DX2/Pentium Overdrive
Processor Speed	20/25/33/40/50(internal)/50/66(internal)MHz
Chip Set	FOREX
Max. Onboard DRAM	64MB
Cache	64/128/256KB
BIOS	AMI
Dimensions	330mm x 218mm
I/O Options	32-bit VESA local bus slots (3)
NPU Options	None



CONNECTIONS			
Purpose	Location	Purpose	Location
Turbo LED	J6	External battery	JP1
Speaker	J7	32-bit VESA Local bus slot	S1
Turbo switch	J8	32-bit VESA Local bus slot	S2
Power LED & keylock	J9	32-bit VESA Local bus slot	S3
Reset switch	J10		

Continued next page...

INFORMTECH INTERNATIONAL, INC.

IT486SMVG MINI

... continued from previous page.

USER CONFIGURABLE SETTINGS		
Function	Jumper	Position
í CPU PQFP enabled	JP5	Open
CPU PQFP disabled	JP5	Closed

DRAM CONFIGURATION		
Size	Bank 0	Bank 1
1MB	(4) 256K x 9	NONE
2MB	(4) 256K x 9	(4) 256K x 9
4MB	(4) 1M x 9	NONE
5MB	(4) 256K x 9	(4) 1M x 9
8MB	(4) 1M x 9	(4) 1M x 9
16MB	(4) 4M x 9	NONE
20MB	(4) 1M x 9	(4) 4M x 9
32MB	(4) 4M x 9	(4) 4M x 9
64MB	(4) 16M x 9	NONE

CACHE CONFIGURATION			
Size	Bank 0	Bank 1	TAG
64KB	(4) 8K x 8	(4) 8K x 8	(1) 8K x 8
128KB	(4) 32K x 8	NONE	(1) 8K x 8
256KB	(4) 32K x 8	(4) 32K x 8	(1) 32K x 4

CACHE JUMPER CONFIGURATION			
Size	JP8A	JP8B	JP8C
64KB	pins 2 & 3 closed	pins 1 & 2 closed	pins 2 & 3 closed
128KB	pins 1 & 2 closed	pins 2 & 3 closed	pins 1 & 2 closed
256KB	pins 1 & 2 closed	pins 1 & 2 closed	pins 1 & 2 closed

CPU TYPE CONFIGURATION					
Type	JP2	JP3	JP4	JP12	JP20
80486SX	pins 2 & 3	pins 2 & 3	pins 2 & 3	pins 1 & 2	N/A
80487SX	pins 2 & 3	pins 1 & 2	pins 1 & 2	pins 1 & 2	N/A
CX486DX	N/A	N/A	N/A	N/A	Open
80486DX	pins 1 & 2	pins 1 & 2	pins 1 & 2	pins 1 & 2	N/A
80486DX (PQFP)	pins 2 & 3	pins 2 & 3	pins 2 & 3	pins 1 & 2	N/A
ODP486SX	pins 2 & 3	pins 1 & 2	pins 1 & 2	pins 1 & 2	N/A
CX486DX2	N/A	N/A	N/A	N/A	Closed
80486DX2	pins 1 & 2	pins 1 & 2	pins 1 & 2	pins 1 & 2	N/A
Pentium Overdrive	pins 1 & 2	pins 1 & 2	pins 1 & 2	pins 2 & 3	N/A

Note: Pins designated should be in the closed position.

Continued next page...

INFORMTECH INTERNATIONAL, INC.

IT486SMVG MINI

... continued from previous page.

CPU SPEED CONFIGURATION			
Speed	JP7A	JP7B	JP7C
20MHz	Open	Closed	Closed
25MHz	N/A	Open	Open
33MHz	Open	Open	Open
40MHz	Closed	Closed	Open
50i MHz	N/A	Open	Open
50MHz	Open	Closed	Open
66i MHz	Open	Open	Open

VESA WAIT STATE/BUS SPEED CONFIGURATION			
CPU speed	Wait states	JP10	JP11
≤ 33MHz	0 wait states	pins 1 & 2 closed	pins 1 & 2 closed
> 33MHz	1 wait state	pins 2 & 3 closed	pins 2 & 3 closed