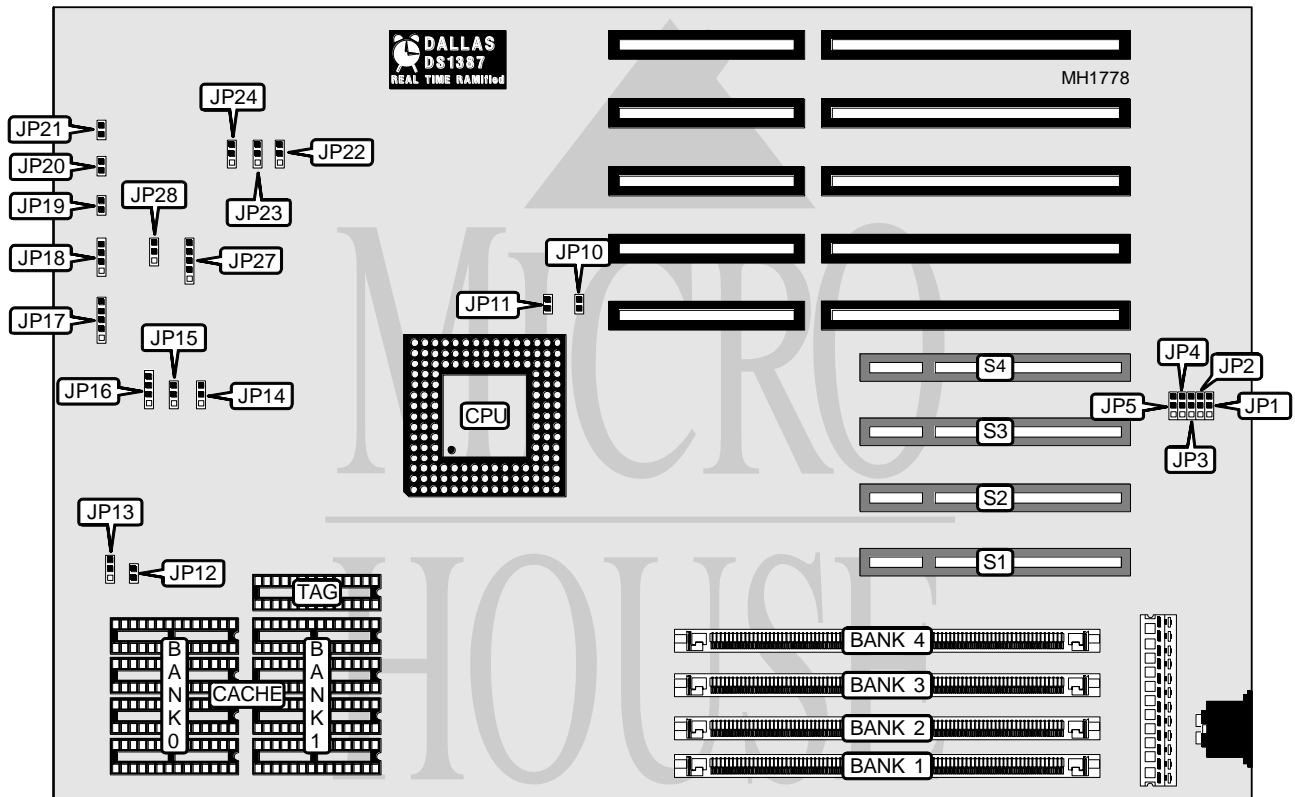


FREE COMPUTER TECHNOLOGY, INC.

80486 PCI

Processor	80486SX/80487SX/80486DX/ODP486SX/80486DX2/Pentium Overdrive
Processor Speed	25/33/50(internal)/66(internal)MHz
Chip Set	Saturn
Max. Onboard DRAM	128MB
Cache	128/256/512KB
BIOS	AMI
Dimensions	330mm x 218mm
I/O Options	32-bit PCI local bus slots (4)
NPU Options	None



CONNECTIONS			
Purpose	Location	Purpose	Location
Power LED & keylock	JP17	32-bit VESA Local bus slot	S1
Speaker	JP18	32-bit VESA Local bus slot	S2
Reset switch	JP19	32-bit VESA Local bus slot	S3
Turbo LED	JP20	32-bit VESA Local bus slot	S4
Turbo switch	JP21		

USER CONFIGURABLE SETTINGS			
Function	Jumper	Position	
í Factory configured - do not alter	JP1	N/A	
í Cache enabled	JP4	pins 2 & 3 closed	
Cache disabled	JP4	pins 1 & 2 closed	

Continued next page...

FREE COMPUTER TECHNOLOGY, INC.

80486 PCI

... continued from previous page.

DRAM CONFIGURATION				
Size	Bank 1	Bank 2	Bank 3	Bank 4
2MB	(1) 1M x 36	(1) 1M x 36	NONE	NONE
4MB	(1) 1M x 36	(1) 1M x 36	(1) 1M x 36	(1) 1M x 36
4MB	(1) 2M x 36	(1) 2M x 36	NONE	NONE
6MB	(1) 1M x 36	(1) 1M x 36	(1) 2M x 36	(1) 2M x 36
6MB	(1) 2M x 36	(1) 2M x 36	(1) 1M x 36	(1) 1M x 36
8MB	(1) 2M x 36	(1) 2M x 36	(1) 2M x 36	(1) 2M x 36
8MB	(1) 4M x 36	(1) 4M x 36	NONE	NONE
10MB	(1) 1M x 36	(1) 1M x 36	(1) 4M x 36	(1) 4M x 36
10MB	(1) 4M x 36	(1) 4M x 36	(1) 1M x 36	(1) 1M x 36
12MB	(1) 2M x 36	(1) 2M x 36	(1) 4M x 36	(1) 4M x 36
12MB	(1) 4M x 36	(1) 4M x 36	(1) 2M x 36	(1) 2M x 36
16MB	(1) 4M x 36	(1) 4M x 36	(1) 4M x 36	(1) 4M x 36
16MB	(1) 8M x 36	(1) 8M x 36	NONE	NONE
18MB	(1) 1M x 36	(1) 1M x 36	(1) 8M x 36	(1) 8M x 36
18MB	(1) 8M x 36	(1) 8M x 36	(1) 1M x 36	(1) 1M x 36
20MB	(1) 2M x 36	(1) 2M x 36	(1) 8M x 36	(1) 8M x 36
20MB	(1) 8M x 36	(1) 8M x 36	(1) 2M x 36	(1) 2M x 36
24MB	(1) 4M x 36	(1) 4M x 36	(1) 8M x 36	(1) 8M x 36
24MB	(1) 8M x 36	(1) 8M x 36	(1) 4M x 36	(1) 4M x 36
32MB	(1) 8M x 36	(1) 8M x 36	(1) 8M x 36	(1) 8M x 36
32MB	(1) 16M x 36	(1) 16M x 36	NONE	NONE
34MB	(1) 1M x 36	(1) 1M x 36	(1) 16M x 36	(1) 16M x 36
34MB	(1) 16M x 36	(1) 16M x 36	(1) 1M x 36	(1) 1M x 36
36MB	(1) 2M x 36	(1) 2M x 36	(1) 16M x 36	(1) 16M x 36
36MB	(1) 16M x 36	(1) 16M x 36	(1) 2M x 36	(1) 2M x 36
40MB	(1) 4M x 36	(1) 4M x 36	(1) 16M x 36	(1) 16M x 36
40MB	(1) 16M x 36	(1) 16M x 36	(1) 4M x 36	(1) 4M x 36
48MB	(1) 8M x 36	(1) 8M x 36	(1) 16M x 36	(1) 16M x 36
48MB	(1) 16M x 36	(1) 16M x 36	(1) 8M x 36	(1) 8M x 36
64MB	(1) 16M x 36	(1) 16M x 36	(1) 16M x 36	(1) 16M x 36
64MB	(1) 32M x 36	(1) 32M x 36	NONE	NONE
66MB	(1) 1M x 36	(1) 1M x 36	(1) 32M x 36	(1) 32M x 36
66MB	(1) 32M x 36	(1) 32M x 36	(1) 1M x 36	(1) 1M x 36
68MB	(1) 2M x 36	(1) 2M x 36	(1) 32M x 36	(1) 32M x 36
68MB	(1) 32M x 36	(1) 32M x 36	(1) 2M x 36	(1) 2M x 36
72MB	(1) 4M x 36	(1) 4M x 36	(1) 32M x 36	(1) 32M x 36
72MB	(1) 32M x 36	(1) 32M x 36	(1) 4M x 36	(1) 4M x 36
80MB	(1) 32M x 36	(1) 32M x 36	(1) 8M x 36	(1) 8M x 36
80MB	(1) 8M x 36	(1) 8M x 36	(1) 32M x 36	(1) 32M x 36
96MB	(1) 16M x 36	(1) 16M x 36	(1) 32M x 36	(1) 32M x 36
96MB	(1) 32M x 36	(1) 32M x 36	(1) 16M x 36	(1) 16M x 36
128MB	(1) 32M x 36	(1) 32M x 36	(1) 32M x 36	(1) 32M x 36

Continued next page...

FREE COMPUTER TECHNOLOGY, INC.

80486PCI

... continued from previous page.

CACHE CONFIGURATION			
Size	Bank 0	Bank 1	TAG
128KB	(4) 32K x 8	NONE	(1) 8K x 8
256KB	(4) 32K x 8	(4) 32K x 8	(1) 32K x 8
512KB	(4) 128K x 8	NONE	(1) 32K x 8

CACHE JUMPER CONFIGURATION				
Size	JP2	JP3	JP12	JP13
128KB	pins 1 & 2 closed	pins 2 & 3 closed	Open	Open
256KB	pins 2 & 3 closed	pins 1 & 2 closed	Closed	Open
512KB	pins 2 & 3 closed	pins 2 & 3 closed	Closed	Closed

CPU TYPE CONFIGURATION			
Type	JP14	JP15	JP16
80486SX	pins 1 & 2 closed	Open	pins 2 & 3 closed
80486DX	pins 1 & 2 closed	pins 1 & 2 closed	pins 1 & 2 and 3 & 4 closed
80487SX	pins 1 & 2 closed	pins 2 & 3 closed	pins 1 & 2 and 3 & 4 closed
ODP486SX	pins 1 & 2 closed	pins 2 & 3 closed	pins 1 & 2 and 3 & 4 closed
80486DX2	pins 1 & 2 closed	pins 1 & 2 closed	pins 1 & 2 and 3 & 4 closed
Pentium Overdrive	pins 2 & 3 closed	pins 2 & 3 closed	pins 1 & 2 and 3 & 4 closed

CPU SPEED CONFIGURATION			
Speed	JP5	JP10	JP11
25MHz	pins 1 & 2 closed	Open	Closed
33MHz	pins 2 & 3 closed	Closed	Open
50iMHz	pins 1 & 2 closed	Open	Closed
66iMHz	pins 2 & 3 closed	Closed	Open

PCI IRQ CONFIGURATION			
Type	JP22	JP23	JP24
IRQ 5	pins 1 & 2 closed	pins 1 & 2 closed	pins 2 & 3 closed
IRQ 11	pins 1 & 2 closed	pins 2 & 3 closed	pins 1 & 2 closed
IRQ 15	pins 2 & 3 closed	pins 1 & 2 closed	pins 1 & 2 closed
Not installed	pins 1 & 2 closed	pins 1 & 2 closed	pins 1 & 2 closed

IDE TYPE CONFIGURATION		
Type	JP27	JP28
ISA IDE controller	Closed	pins 2 & 3 closed
PCI IDE controller (edge trigger)	Open	pins 4 & 5 closed
PCI IDE controller (level trigger)	Open	pins 1 & 2 closed