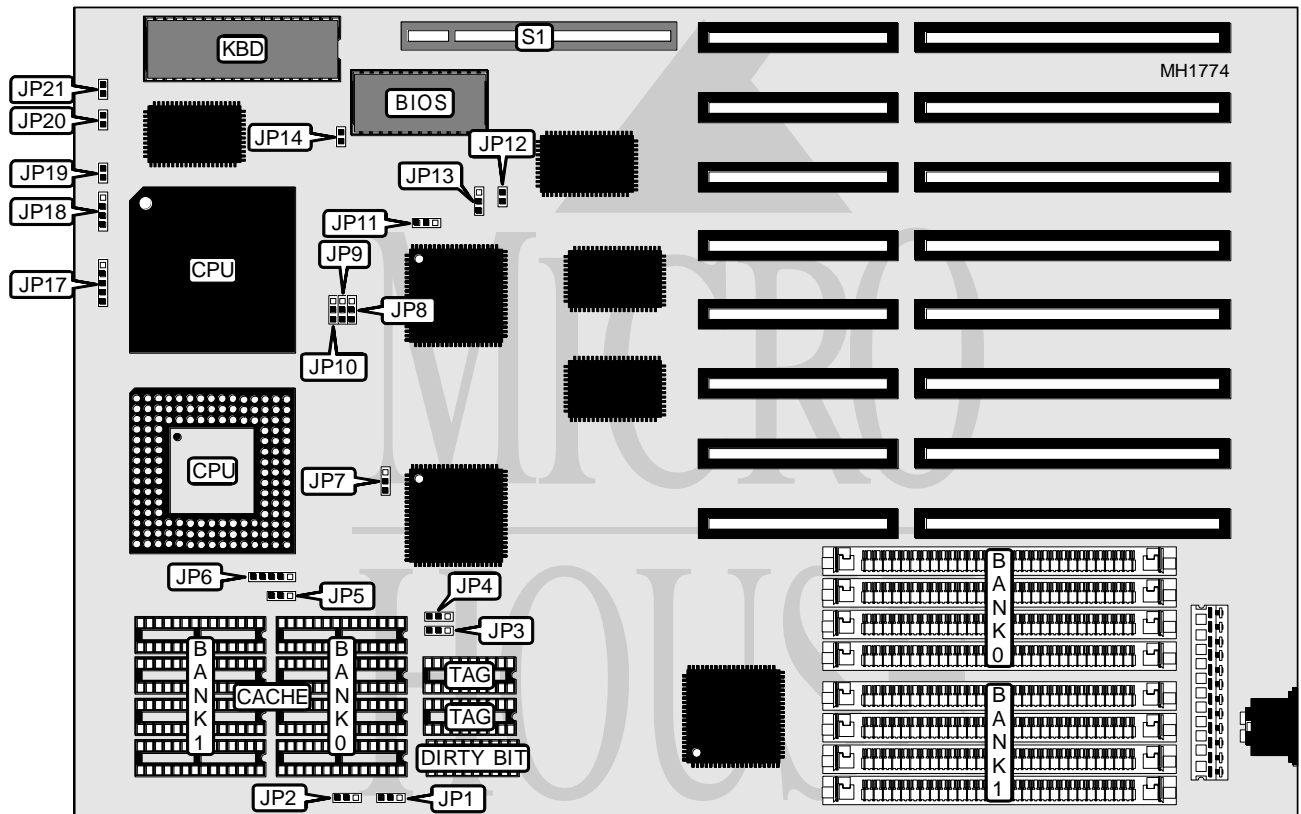


ELITEGROUP COMPUTER SYSTEMS, INC.

SL 486 E

Processor	80486SX/80487SX/80486DX/ODP486SX/80486DX2
Processor Speed	20/25/33/50(internal)/50/66(internal)MHz
Chip Set	SIS
Max. Onboard DRAM	128MB
Cache	64/128/256KB
BIOS	AMI
Dimensions	330mm x 218mm
I/O Options	32-bit VESA local bus slot (1)
NPU Options	None



CONNECTIONS			
Purpose	Location	Purpose	Location
Power LED & keylock	JP17	Turbo switch	JP20
Speaker	JP18	Turbo LED	JP21
Reset switch	JP19	32-bit VESA Local bus slot	S1

Continued on next page . . .

ELITEGROUP COMPUTER SYSTEMS, INC.

SL 486E

... continued from previous page

USER CONFIGURABLE SETTINGS		
Function	Jumper	Position
í System arbitration logic in 85C406	JP11	pins 2 & 3 closed
System arbitration logic in 85C406 bypass CPU	JP11	pins 1 & 2 closed
í Local memory burst mode enabled	JP12	Closed
Local memory burst mode disabled	JP12	Open
í Factory configured - do not alter	JP13	pins 1 & 2 closed
í Monitor type select color	JP14	Closed
Monitor type select monochrome	JP14	Open

DRAM CONFIGURATION		
Size	Bank 0	Bank 1
1MB	(4) 265K x 9	NONE
2MB	(4) 265K x 9	(4) 265K x 9
4MB	(4) 1M x 9	NONE
5MB	(4) 265K x 9	(4) 1M x 9
8MB	(4) 1M x 9	(4) 1M x 9
16MB	(4) 4M x 9	NONE
20MB	(4) 4M x 9	(4) 1M x 9
32MB	(4) 4M x 9	(4) 4M x 9
64MB	(4) 16M x 9	NONE
128MB	(4) 16M x 9	(4) 16M x 9

CACHE CONFIGURATION					
Size	Max Cachable	Bank 0	Bank 1	Dirty Bit	TAG
64KB	16MB	(4) 8K x 8	(4) 8K x 8	(1) 16K x 4	(2) 16K x 4
128KB	32MB	(4) 32K x 8	NONE	(1) 16K x 4	(2) 16K x 4
256KB	64MB	(4) 32K x 8	(4) 32K x 8	(1) 16K x 4	(2) 16K x 4

CACHE JUMPER CONFIGURATION						
Size	JP1	JP2	JP3	JP4	JP5	JP6
64KB	pins 1 & 2	pins 1 & 2	pins 1 & 2	pins 1 & 2	pins 1 & 2	pins 2 & 3
128KB	pins 1 & 2	pins 2 & 3	pins 2 & 3	pins 1 & 2	pins 2 & 3	pins 1 & 2
256KB	pins 2 & 3	pins 2 & 3	pins 2 & 3	pins 2 & 3	pins 2 & 3	pins 4 & 5

Note: Pins designated should be in the closed position.

CPU TYPE CONFIGURATION			
Type	JP8	JP9	JP10
80486SX	pins 1 & 2 closed	pins 1 & 2 closed	pins 1 & 2 closed
80487SX	pins 2 & 3 closed	pins 2 & 3 closed	pins 1 & 2 closed
80486DX	pins 2 & 3 closed	pins 2 & 3 closed	pins 1 & 2 closed
ODP486SX	pins 2 & 3 closed	pins 2 & 3 closed	pins 1 & 2 closed
80486DX2	pins 2 & 3 closed	pins 2 & 3 closed	pins 1 & 2 closed

Continued on next page . . .

ELITEGROUP COMPUTER SYSTEMS, INC.
SL 486E*... continued from previous page*

CPU SPEED CONFIGURATION	
Speed	JP7
20MHz	pins 1 & 2 closed
25MHz	pins 1 & 2 closed
33MHz	pins 1 & 2 closed
50i MHz	pins 1 & 2 closed
50MHz	pins 2 & 3 closed
66i MHz	pins 1 & 2 closed