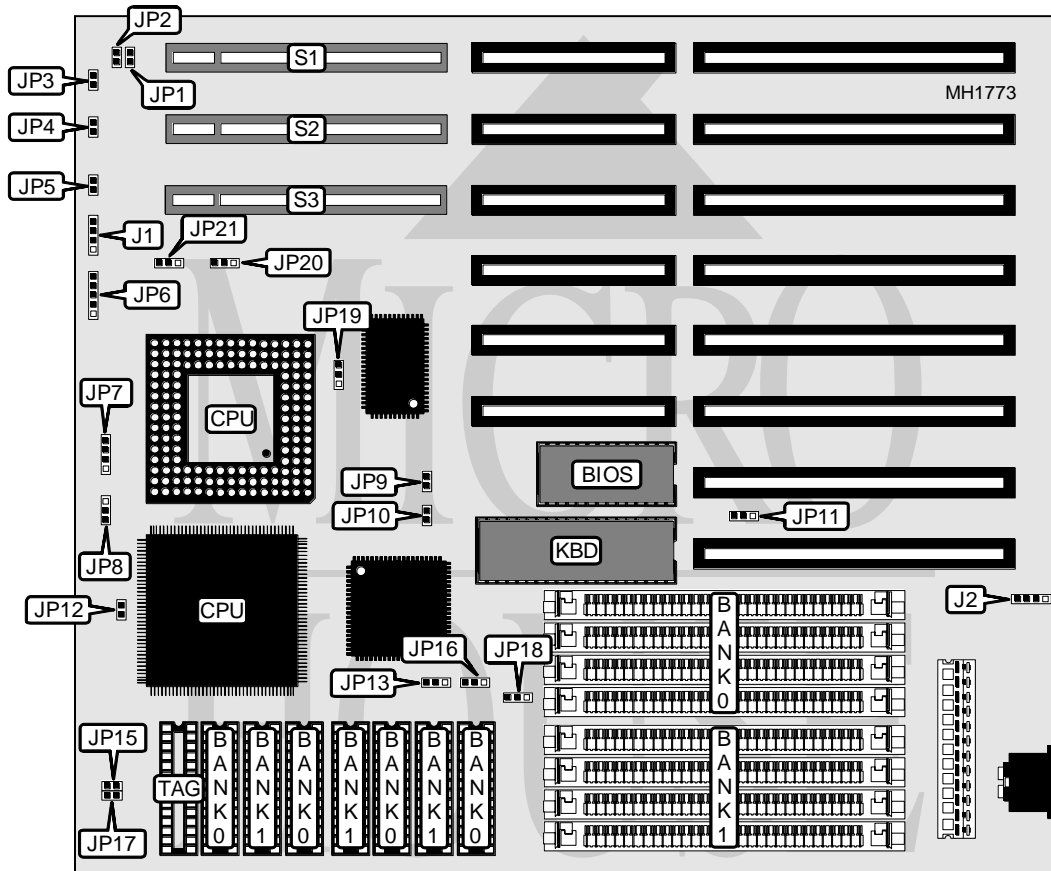


ELITEGROUP COMPUTER SYSTEMS, INC.

UC 4913

Processor	80486SX/80486DX/ODP486SX/80486DX2/CX486SX
Processor Speed	25/33/40/50(internal)/50/66(internal)MHz
Chip Set	UMC
Max. Onboard DRAM	64MB
Cache	64/128/256KB
BIOS	AMI
Dimensions	230mm x 218mm
I/O Options	32-bit VESA local bus slots (3)
NPU Options	CX487SX



CONNECTIONS			
Purpose	Location	Purpose	Location
Speaker	J1	Power LED & keylock	JP6
External battery	J2	32-bit VESA Local bus slot	S1
Turbo LED	JP3	32-bit VESA Local bus slot	S2
Turbo switch	JP4	32-bit VESA Local bus slot	S3
Reset switch	JP5		

Continued on next page . . .

ELITEGROUP COMPUTER SYSTEMS, INC.

UC 4913

... continued from previous page

USER CONFIGURABLE SETTINGS		
Function	Jumper	Position
í Monitor type select color	JP11	pins 2 & 3 closed
Monitor type select monochrome	JP11	pins 1 & 2 closed
í Weitek Power 9000 VESA VGA card not installed	JP18	pins 1 & 2 closed
Weitek Power 9000 VESA VGA card installed	JP18	pins 2 & 3 closed

DRAM CONFIGURATION		
Size	Bank 0	Bank 1
1MB	(4) 256K x 9	NONE
2MB	(4) 256K x 9	(4) 256K x 9
4MB	(4) 1M x 9	NONE
5MB	(4) 256K x 9	(4) 1M x 9
8MB	(4) 1M x 9	(4) 1M x 9
16MB	(4) 4M x 9	NONE
20MB	(4) 1M x 9	(4) 4M x 9
32MB	(4) 4M x 9	(4) 4M x 9
64MB	(4) 16M x 9	NONE

CACHE CONFIGURATION			
Size	Bank 0	Bank 1	TAG
64KB	(4) 8K x 8	(4) 8K x 8	(1) 8K x 8
128KB	(4) 32K x 8	NONE	NONE
256KB	(4) 32K x 8	(4) 32K x 8	(1) 32K x 8

CACHE JUMPER CONFIGURATION				
Size	JP13	JP15	JP16	JP17
64KB	Open	Open	pins 1 & 2 closed	Open
128KB	pins 2 & 3 closed	Open	pins 2 & 3 closed	Closed
256KB	pins 1 & 2 closed	Closed	pins 1 & 2 closed	Closed

CPU TYPE CONFIGURATION				
PGA	Socket	JP7	JP8	JP12
80386DX	PGA	pins 2 & 3 closed	Open	Closed
80486SX	PQFP	pins 2 & 3 closed	Open	Open
80486SX	PGA	N/A	N/A	Closed
80486DX	PQFP	pins 1 & 2 and 3 & 4	pins 2 & 3 closed	Open
80486DX	PGA	N/A	N/A	Closed
80486DX2	PQFP	pins 1 & 2 and 3 & 4	pins 2 & 3 closed	Open
80486DX2	PGA	N/A	N/A	Closed
ODP486SX	PQFP	pins 1 & 2 and 3 & 4	pins 1 & 2 closed	Open
ODP486SX	PGA	N/A	N/A	Closed
CX486SX/CX487SX	PGA	pins 1 & 2 and 3 & 4	pins 2 & 3 closed	Closed

Continued on next page . . .

ELITEGROUP COMPUTER SYSTEMS, INC.

UC 4913

... continued from previous page

CPU SPEED CONFIGURATION		
Speed	JP9	JP10
25MHz	Closed	Closed
33MHz	Open	Closed
40MHz	Closed	Open
50i MHz	Closed	Closed
66i MHz	Open	Closed

NPU CONFIGURATION			
CX487SX	JP19	JP20	JP21
Installed	pins 2 & 3 closed	pins 1 & 2 closed	pins 1 & 2 closed
Not installed	pins 1 & 2 closed	pins 2 & 3 closed	pins 2 & 3 closed

VESA WAIT STATE/BUS SPEED CONFIGURATION			
CPU speed	Wait states	JP1	JP2
≤ 33MHz	0 wait states	Open	Open
> 33MHz	1 wait state	Closed	Closed