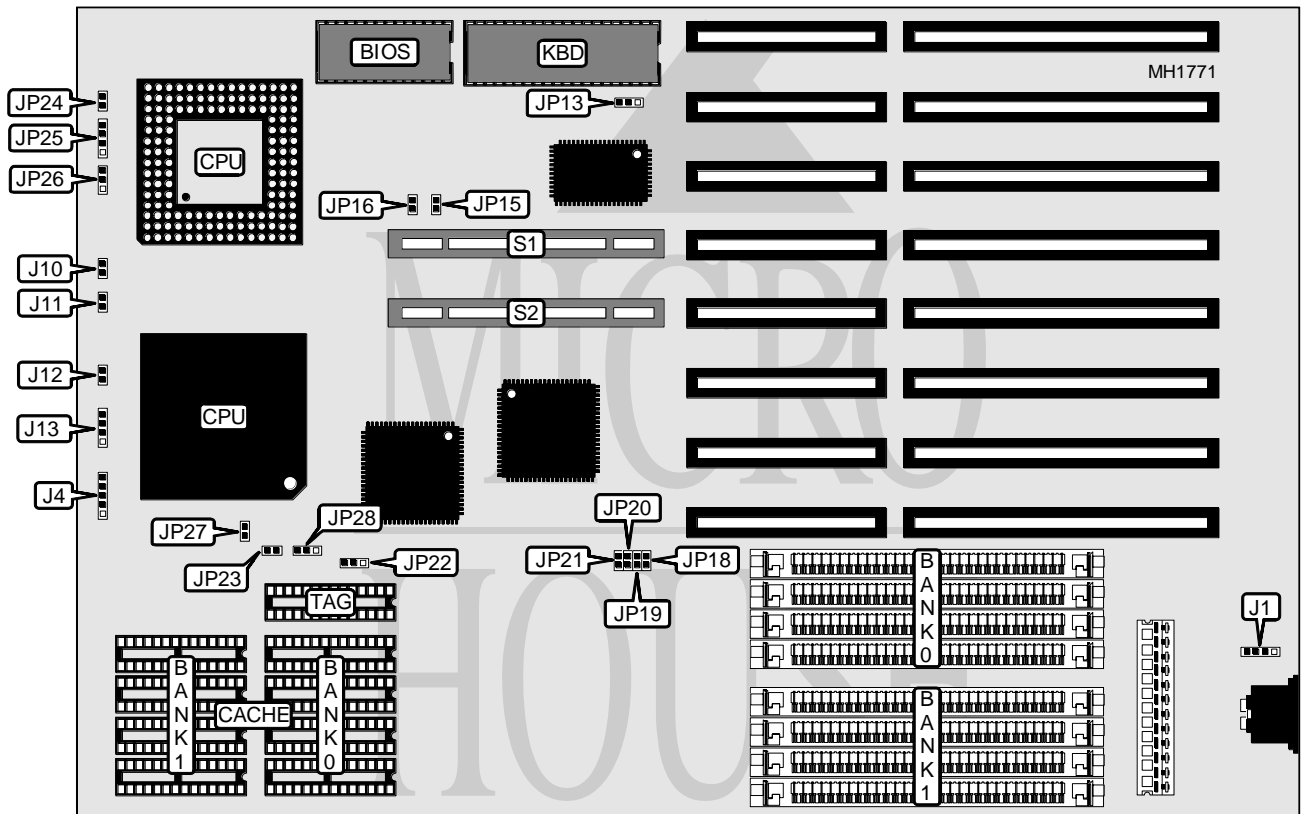


ELITEGROUP COMPUTER SYSTEMS, INC.

UM 486V

Processor	80486SX/80487SX/80486DX/80486DX2/Pentium Overdrive
Processor Speed	25/33/50(internal)/50/66(internal)MHz
Chip Set	UMC
Max. Onboard DRAM	32MB
Cache	64/128/256KB
BIOS	AMI
Dimensions	330mm x 218mm
I/O Options	32-bit VESA local bus slots (2)
NPU Options	None



CONNECTIONS			
Purpose	Location	Purpose	Location
External battery	J1	Reset switch	J12
Power LED & keylock	J4	Speaker	J13
Turbo LED	J10	32-bit VESA Local bus slot	S1
Turbo switch	J11	32-bit VESA Local bus slot	S2

Continued on next page . . .

ELITEGROUP COMPUTER SYSTEMS, INC.

UM 486V

... continued from previous page

USER CONFIGURABLE SETTINGS		
Function	Jumper	Position
í Monitor type select color	JP13	pins 2 & 3 closed
Monitor type select monochrome	JP13	pins 1 & 2 closed

DRAM CONFIGURATION		
Size	Bank 0	Bank 1
1MB	(4) 256K x 9	NONE
2MB	(4) 256K x 9	(4) 256K x 9
4MB	(4) 1M x 9	NONE
5MB	(4) 256K x 9	(4) 1M x 9
8MB	(4) 1M x 9	(4) 1M x 9
16MB	(4) 4M x 9	NONE
20MB	(4) 1M x 9	(4) 4M x 9
32MB	(4) 4M x 9	(4) 4M x 9

CACHE CONFIGURATION			
Size	Bank 0	Bank 1	TAG
64KB	(4) 8K x 8	(4) 8K x 8	(1) 8K x 8
128KB	(4) 32K x 8	NONE	(1) 8K x 8
256KB	(4) 32K x 8	(4) 32K x 8	(1) 32K x 8

CACHE JUMPER CONFIGURATION				
Size	JP22	JP23	JP27	JP28
64KB	pins 1 & 2 closed	Open	Open	pins 1 & 2 closed
128KB	pins 2 & 3 closed	Open	Closed	pins 2 & 3 closed
256KB	pins 1 & 2 closed	Closed	Closed	pins 2 & 3 closed

CPU TYPE CONFIGURATION			
Type	JP24	JP25	JP26
80486SX	Closed	pins 2 & 3 closed	Open
80486SX (PQFP)	Open	N/A	N/A
80487SX	Closed	pins 1 & 2 and 3 & 4 closed	pins 2 & 3 closed
80486DX	Closed	pins 1 & 2 and 3 & 4 closed	pins 1 & 2 closed
80486DX2	Closed	pins 1 & 2 and 3 & 4 closed	pins 1 & 2 closed
Pentium Overdrive	Closed	pins 1 & 2 and 3 & 4 closed	pins 2 & 3 closed

CPU SPEED CONFIGURATION				
Speed	JP18	JP19	JP20	JP21
25MHz	Closed	Closed	Open	Open
33MHz	Open	Closed	Open	Open
50i MHz	Closed	Closed	Open	Open
50MHz	Open	Open	Open	Open
66i MHz	Open	Closed	Open	Open

Continued on next page . . .

ELITEGROUP COMPUTER SYSTEMS, INC.
UM 486V

... continued from previous page

VESA WAIT STATE/BUS SPEED (ID2 & ID3) CONFIGURATION			
CPU speed	Wait states	JP15 (ID3)	JP16 (ID2)
≤ 33MHz	0 wait states	Open	Open
> 33MHz	1 wait state	Closed	Closed