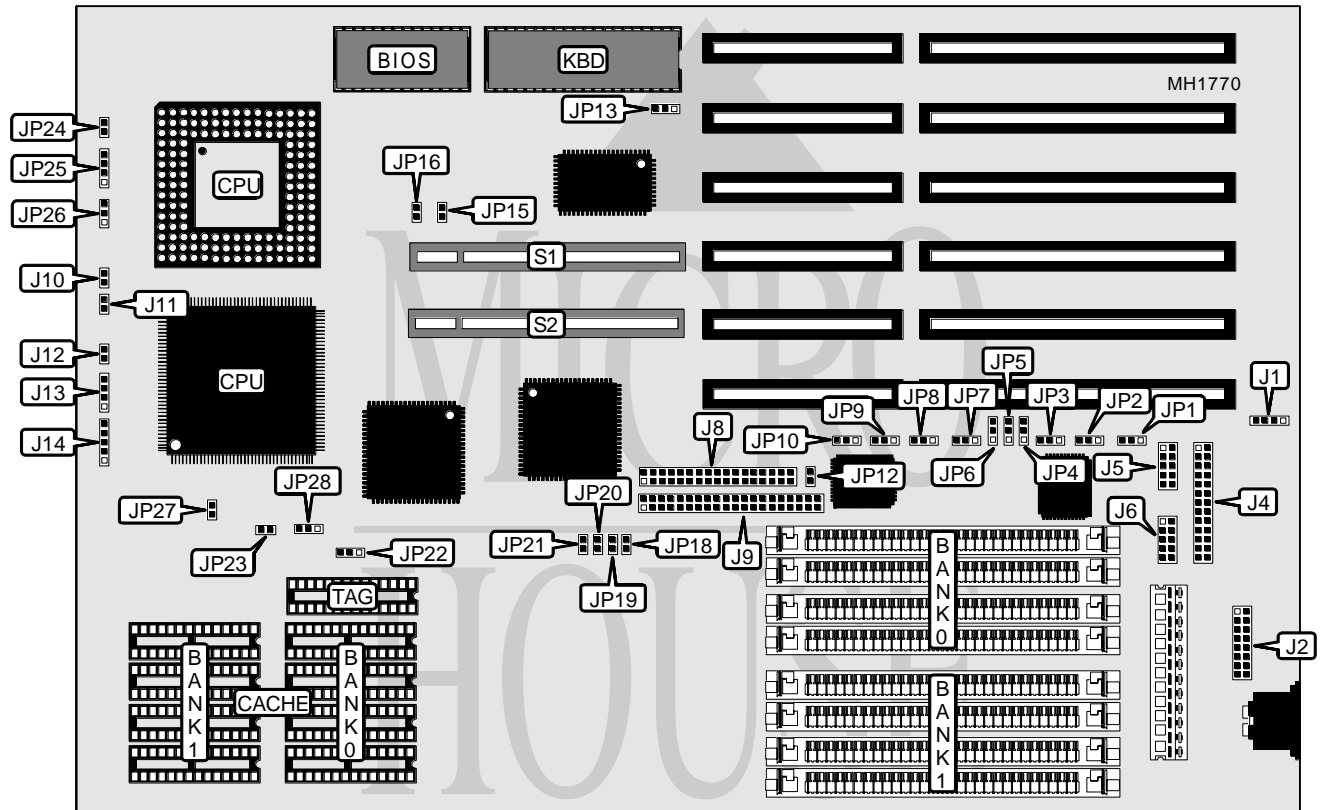


ELITEGROUP COMPUTER SYSTEMS, INC.

UM 486V A10

Processor	80486SX/80487SX/80486DX/80486DX2/Pentium Overdrive
Processor Speed	25/33/50(internal)/50/66(internal)MHz
Chip Set	UMC
Max. Onboard DRAM	32MB
Cache	64/128/256KB
BIOS	AMI
Dimensions	330mm x 218mm
I/O Options	32-bit VESA local bus slots (2), floppy drive interface, game port, IDE interface, parallel port, serial ports (2)
NPU Options	None



CONNECTIONS			
Purpose	Location	Purpose	Location
External battery	J1	Turbo LED	J10
Game port	J2	Turbo switch	J11
Parallel port	J4	Reset switch	J12
Serial port 1	J5	Speaker	J13
Serial port 2	J6	Power LED & keylock	J14
Floppy drive interface	J8	IDE LED connector	JP12
IDE interface connector	J9	32-bit VESA Local bus slots	S1 & S2

Continued on next page . . .

ELITEGROUP COMPUTER SYSTEMS, INC.

UM 486V AIO

... continued from previous page

USER CONFIGURABLE SETTINGS		
Function	Jumper	Position
í Game port enabled	JP1	pins 1 & 2 closed
Game port disabled	JP1	pins 2 & 3 closed
í Floppy drive interface enabled	JP6	pins 1 & 2 closed
Floppy drive interface disabled	JP6	pins 2 & 3 closed
í Monitor type select color	JP13	pins 2 & 3 closed
Monitor type select monochrome	JP13	pins 1 & 2 closed

SERIAL PORT CONFIGURATION					
Port 1 (J5)	Port 2 (J6)	JP3	JP7	JP8	JP9
í COM1	í COM2	pins 1 & 2	pins 1 & 2	pins 1 & 2	pins 1 & 2
COM1	Disabled	pins 2 & 3	N/A	pins 1 & 2	pins 1 & 2
Disabled	COM2	pins 1 & 2	pins 1 & 2	N/A	pins 2 & 3
COM3	COM4	pins 1 & 2	pins 2 & 3	pins 2 & 3	pins 1 & 2
COM3	Disabled	pins 2 & 3	N/A	pins 2 & 3	pins 1 & 2
Disabled	COM4	pins 1 & 2	pins 2 & 3	N/A	pins 2 & 3
Disabled	Disabled	pins 2 & 3	N/A	N/A	pins 2 & 3

Note: Pins designated should be in the closed position.

PARALLEL PORT CONFIGURATION			
Port	LPT	JP2	JP4
Enabled	LPT2	pins 1 & 2 closed	pins 1 & 2 closed
Disabled	LPT3	pins 2 & 3 closed	pins 2 & 3 closed

DRAM CONFIGURATION		
Size	Bank 0	Bank 1
1MB	(4) 256K x 9	NONE
2MB	(4) 256K x 9	(4) 256K x 9
4MB	(4) 1M x 9	NONE
5MB	(4) 256K x 9	(4) 1M x 9
8MB	(4) 1M x 9	(4) 1M x 9
16MB	(4) 4M x 9	NONE
20MB	(4) 1M x 9	(4) 4M x 9
32MB	(4) 4M x 9	(4) 4M x 9

CACHE CONFIGURATION			
Size	Bank 0	Bank 1	TAG
64KB	(4) 8K x 8	(4) 8K x 8	(1) 8K x 8
128KB	(4) 32K x 8	NONE	(1) 8K x 8
256KB	(4) 32K x 8	(4) 32K x 8	(1) 32K x 8

Continued on next page . . .

ELITEGROUP COMPUTER SYSTEMS, INC.

UM 486V A10

... continued from previous page

CACHE JUMPER CONFIGURATION				
Size	JP22	JP23	JP27	JP28
64KB	pins 1 & 2 closed	Open	Open	pins 1 & 2 closed
128KB	pins 2 & 3 closed	Open	Closed	pins 2 & 3 closed
256KB	pins 1 & 2 closed	Closed	Closed	pins 2 & 3 closed

CPU TYPE CONFIGURATION			
Type	JP24	JP25	JP26
80486SX	N/A	pins 2 & 3 closed	Open
80486SX (PQFP)	Open	N/A	N/A
80487SX	N/A	pins 1 & 2 and 3 & 4	pins 2 & 3 closed
80486DX	N/A	pins 1 & 2 and 3 & 4	pins 1 & 2 closed
80486DX2	N/A	pins 1 & 2 and 3 & 4	pins 1 & 2 closed
Pentium Overdrive	N/A	pins 1 & 2 and 3 & 4	pins 2 & 3 closed

CPU SPEED CONFIGURATION				
Speed	JP18	JP19	JP20	JP21
25MHz	Closed	Closed	Open	Open
33MHz	Open	Closed	Open	Open
50i MHz	Closed	Closed	Open	Open
50MHz	Open	Open	Open	Open
66i MHz	Open	Closed	Open	Open

VESA WAIT STATE/BUS SPEED CONFIGURATION			
CPU speed	Wait states	JP15	JP16
≤ 33MHz	0 wait states	Open	Open
> 33MHz	1 wait state	Closed	Closed

IDE CONFIGURATION		
Setting	JP5	JP10
Enabled	pins 1 & 2 closed	pins 1 & 2 closed
Disabled	pins 2 & 3 closed	pins 2 & 3 closed