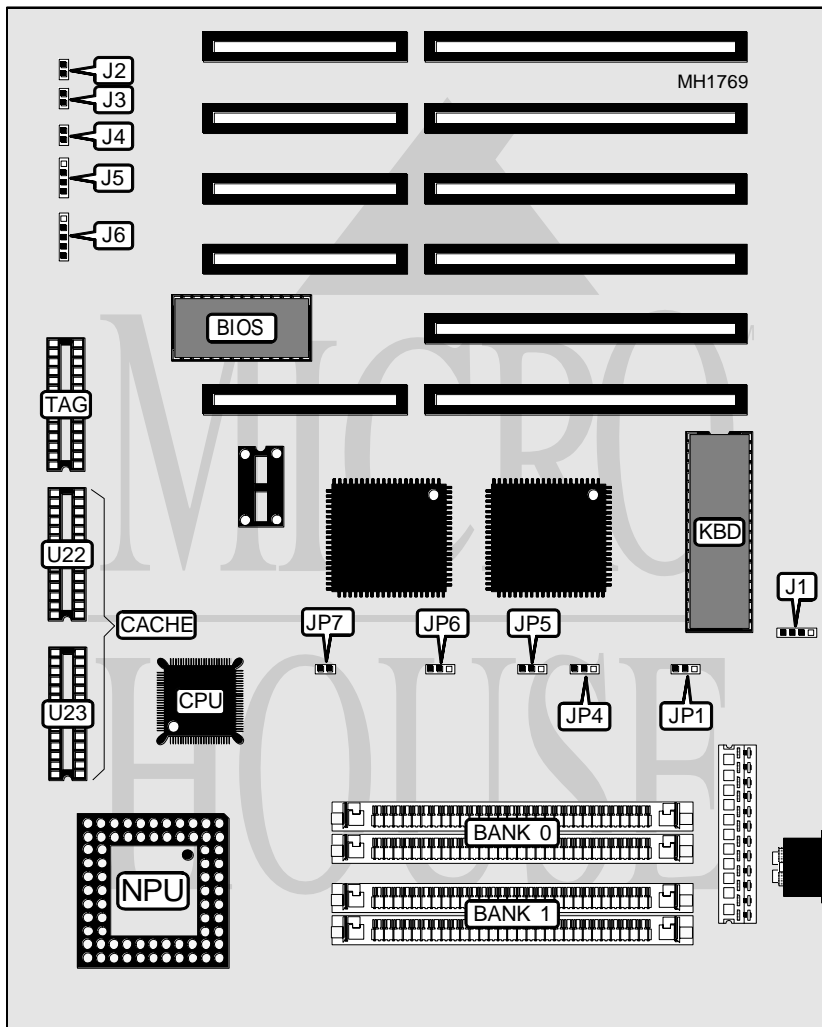


ELITEGROUP COMPUTER SYSTEMS, INC.

WH 386SX

Processor	80386SX
Processor Speed	16/20/25/33MHz
Chip Set	Winbond
Max. Onboard DRAM	16MB
Cache	16/64KB
BIOS	AMI
Dimensions	271mm x 218mm
I/O Options	None
NPU Options	80387SX



CONNECTIONS			
Purpose	Location	Purpose	Location
External battery	J1	Reset switch	J4
Turbo LED	J2	Speaker	J5
Turbo switch	J3	Power LED & keylock	J6

Continued on next page . . .

ELITEGROUP SYSTEMS, INC.
WH 386SX

... continued from previous page

USER CONFIGURABLE SETTINGS		
Function	Jumper	Position
í Monitor type select color	JP1	pins 2 & 3 closed
Monitor type select monochrome	JP1	pins 1 & 2 closed
í Pipeline mode enabled	JP7	Closed
Pipeline mode disabled	JP7	Open

DRAM CONFIGURATION		
Size	Bank 0	Bank 1
512KB	(2) 256K x 9	NONE
1MB	(2) 256K x 9	(2) 256K x 9
2MB	(2) 1M x 9	NONE
2.5MB	(2) 1M x 9	(2) 256K x 9
4MB	(2) 1M x 9	(2) 1M x 9
8MB	(2) 4M x 9	NONE
10MB	(2) 4M x 9	(2) 1M x 9
16MB	(2) 4M x 9	(2) 4M x 9

CACHE CONFIGURATION			
Size	U22	U23	TAG
16KB	(1) 8K x 8	(1) 8K x 8	(1) 8K x 8
64KB	(1) 32K x 8	(1) 32K x 8	(1) 32K x 8

CACHE JUMPER CONFIGURATION	
Size	JP5
16KB	pins 2 & 3 closed
64KB	pins 1 & 2 closed

CPU SPEED CONFIGURATION		
Speed	JP4	JP6
CLK2IN/4	pins 1 & 2 closed	pins 1 & 2 closed
CLK2IN/5	pins 2 & 3 closed	pins 2 & 3 closed
CLK2IN/6	pins 2 & 3 closed	pins 1 & 2 closed
CLK2IN/8	pins 1 & 2 closed	pins 2 & 3 closed