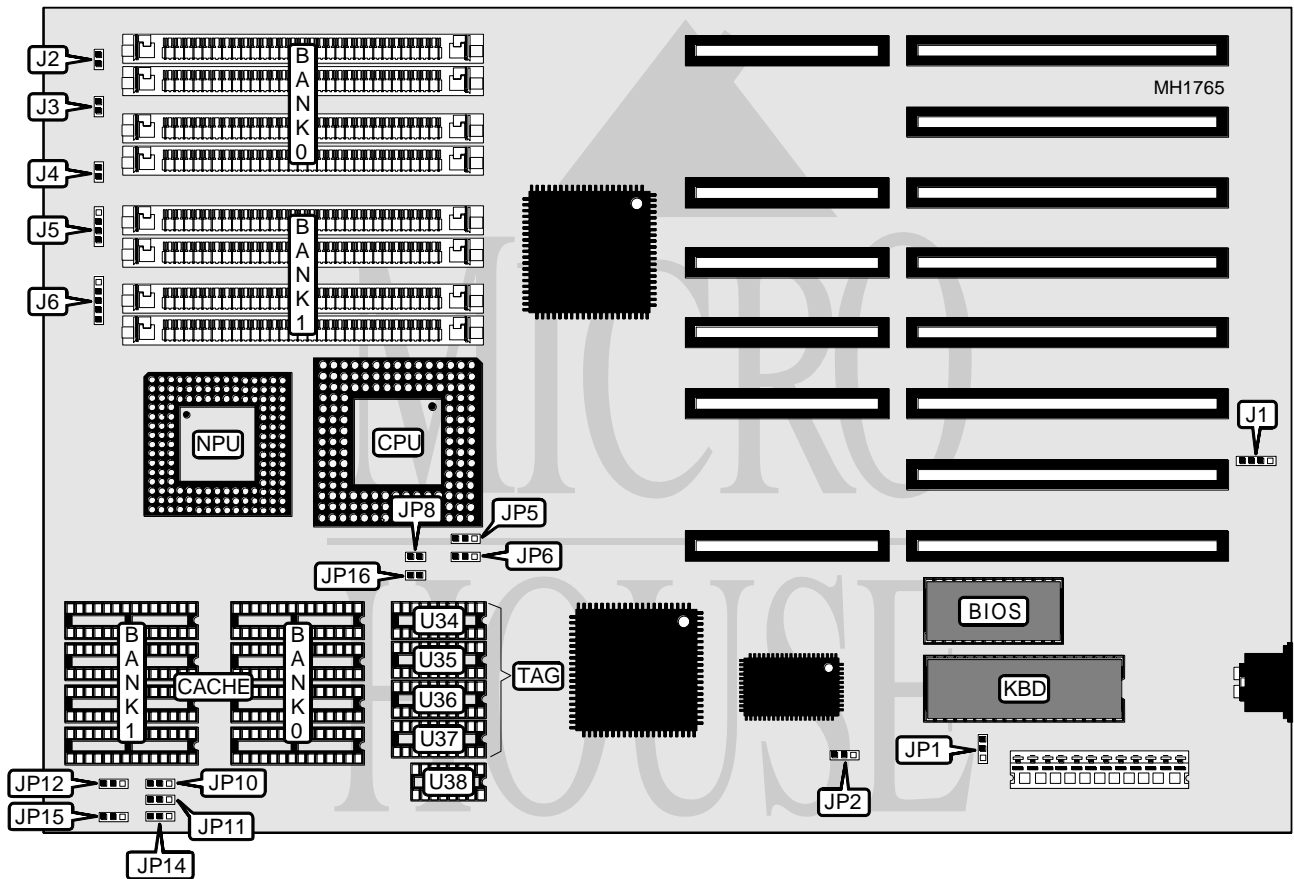


# ELITEGROUP COMPUTER SYSTEMS, INC.

## UM 486/486SX

<b>Processor</b>	80486SX/80487SX/80486DX
<b>Processor Speed</b>	20/25/33/50MHz
<b>Chip Set</b>	UMC
<b>Max. Onboard DRAM</b>	32MB
<b>Cache</b>	32/64/128/256KB
<b>BIOS</b>	AMI
<b>Dimensions</b>	330mm x 218mm
<b>I/O Options</b>	None
<b>NPU Options</b>	4167



CONNECTIONS			
Purpose	Location	Purpose	Location
External battery	J1	Reset switch	J4
Turbo LED	J2	Speaker	J5
Turbo switch	J3	Power LED & keylock	J6

Continued on next page . . .

# ELITEGROUP COMPUTER SYSTEMS, INC.

## UM 486/486SX

... continued from previous page

USER CONFIGURABLE SETTINGS		
Function	Jumper	Position
í Monitor type select color	JP1	pins 2 & 3 closed
Monitor type select monochrome	JP1	pins 1 & 2 closed
í Power good signal detect from power supply	JP2	pins 1 & 2 closed
Power good signal detect from board	JP2	pins 2 & 3 closed

DRAM CONFIGURATION		
Size	Bank 0	Bank 1
1MB	(4) 256K x 9	NONE
2MB	(4) 256K x 9	(4) 256K x 9
4MB	(4) 1M x 9	NONE
5MB	(4) 256K x 9	(4) 1M x 9
8MB	(4) 1M x 9	(4) 1M x 9
16MB	(4) 4M x 9	NONE
20MB	(4) 1M x 9	(4) 4M x 9
32MB	(4) 4M x 9	(4) 4M x 9

CACHE CONFIGURATION				
Size	Bank 0	Bank 1	TAG/U34 - U37	Dirty Bit/U38
32KB	(4) 8K x 8	NONE	(4) 16K x 4	(1) 16K x 1
64KB	(4) 8K x 8	(4) 8K x 8	(4) 16K x 4	(1) 16K x 1
128KB	(4) 32K x 8	NONE	(4) 16K x 4	(1) 16K x 1
256KB	(4) 32K x 8	(4) 32K x 8	(4) 16K x 4	(1) 16K x 1

CACHE JUMPER CONFIGURATION					
Size	JP10	JP11	JP12	JP14	JP15
32KB	pins 2 & 3	Open	pins 1 & 2	pins 1 & 2	pins 1 & 2
64KB	pins 1 & 2	Open	pins 1 & 2	pins 2 & 3	pins 1 & 2
128KB	pins 2 & 3	pins 1 & 2	pins 1 & 2	pins 2 & 3	pins 2 & 3
256KB	pins 1 & 2	pins 2 & 3	pins 2 & 3	pins 2 & 3	pins 2 & 3

Note: Pins designated should be in the closed position.

CPU TYPE CONFIGURATION				
Type	JP5	JP6	JP8	JP16
80486SX	pins 1 & 2 closed	pins 2 & 3 closed	Open	Open
80487SX	pins 2 & 3 closed	pins 1 & 2 closed	Closed	Closed
80486DX	pins 1 & 2 closed	pins 1 & 2 closed	Closed	Open