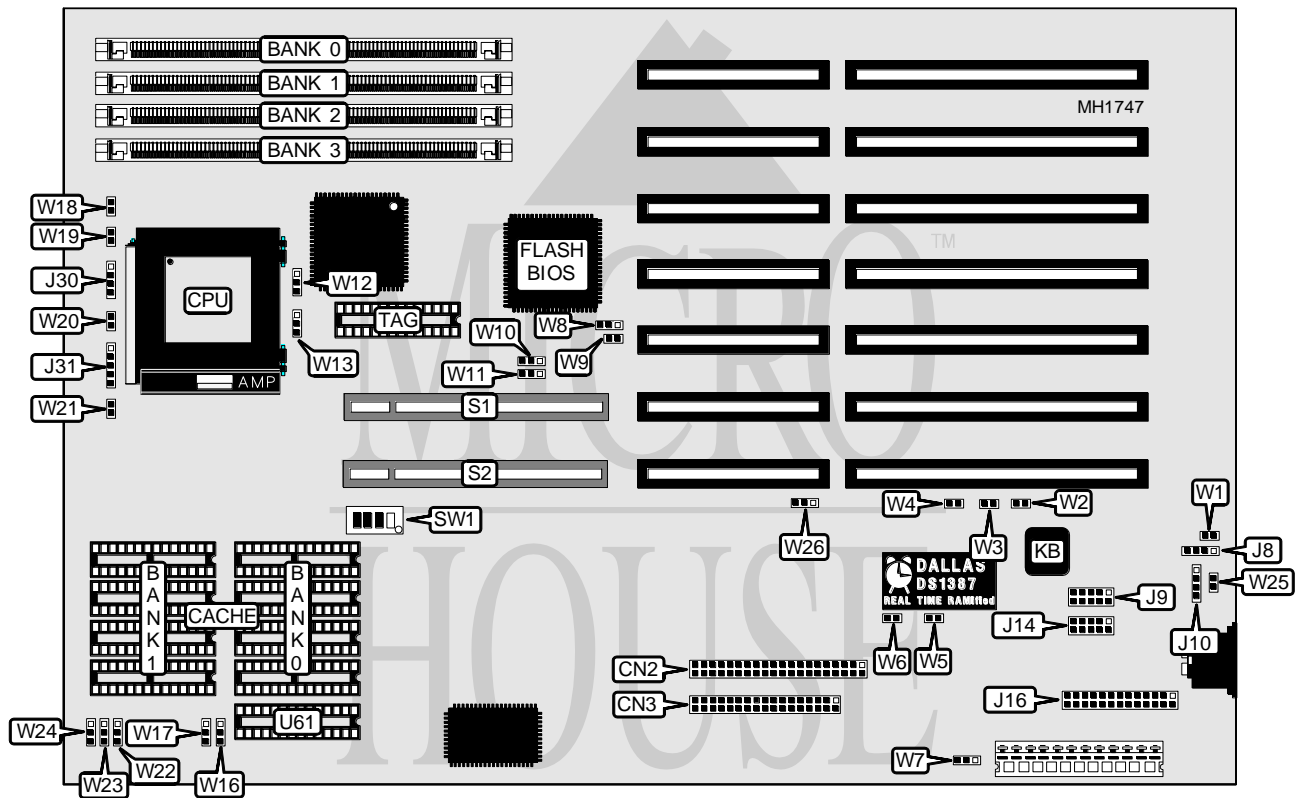


MICRONICS COMPUTERS, INC.

JX30G VL-BUS

Processor	80486SX/80486DX/80486DX2/Pentium Overdrive
Processor Speed	25/33/50(internal)/66(internal)MHz
Chip Set	Micronics
Max. Onboard DRAM	64MB
Cache	64/128/256KB
BIOS	Phoenix
Dimensions	330mm x 218mm
I/O Options	32-bit VESA local bus slots (2), floppy drive interface, IDE interface, parallel port, PS/2 mouse port, serial ports (2)
NPU Options	None



CONNECTIONS			
Purpose	Location	Purpose	Location
IDE interface	CN2	Speaker	J30
Floppy drive interface	CN3	Power LED & keylock	J31
External battery	J8	32-bit VESA Local bus slot	S1
Serial port 2	J9	32-bit VESA Local bus slot	S2
External keyboard/PS2 style mouse	J10	Turbo LED	W18
Serial port 1	J14	Reset switch	W20
Parallel port	J16	IDE interface LED	W21

Continued on next page . . .

MICRONICS COMPUTERS, INC.

JX30G VL-BUS

... continued from previous page

USER CONFIGURABLE SETTINGS		
Function	Jumper/Switch	Position
í Factory configured - do not alter	SW1/switch 3	Off
í Factory configured - do not alter	SW1/switch 4	Off
í Monitor type select color	W2	Closed
Monitor type select monochrome	W2	Open
í PS/2 mouse enabled	W3	Closed
PS/2 mouse disabled	W3	Open
í Parity enabled	W4	Closed
Parity disabled	W4	Open
í Factory configured - do not alter	W6	Open
í Parallel port unidirectional (for printer)	W7	pins 1 & 2 closed
Parallel port bi-directional	W7	pins 2 & 3 closed
í CMOS memory normal operation	W8	pins 2 & 3 closed
CMOS memory clear	W8	pins 1 & 2 closed
í Factory configured - do not alter	W9	Open
í Factory configured - do not alter	W25	N/A
í Factory configured - do not alter	W26	N/A

REAL TIME CLOCK SETTINGS		
Settings	W1	W5
DALLAS Real Time Clock enabled	Closed	N/A
MOTOROLA 146818 Real Time Clock enabled	Open	N/A
DALLAS Real Time Clock clear	N/A	Closed
Real time clock normal operation	N/A	Open

DRAM CONFIGURATION				
Size	Bank 0	Bank 1	Bank 2	Bank 3
1MB	(1) 256K x 36	NONE	NONE	NONE
2MB	(1) 256K x 36	(1) 256K x 36	NONE	NONE
4MB	(1) 1M x 36	NONE	NONE	NONE
6MB	(1) 256K x 36	(1) 256K x 36	(1) 1M x 36	NONE
8MB	(1) 1M x 36	(1) 1M x 36	NONE	NONE
10MB	(1) 256K x 36	(1) 256K x 36	(1) 1M x 36	(1) 1M x 36
12MB	(1) 1M x 36	(1) 1M x 36	(1) 1M x 36	NONE
16MB	(1) 1M x 36	(1) 1M x 36	(1) 1M x 36	(1) 1M x 36
16MB	(1) 4M x 36	NONE	NONE	NONE
18MB	(1) 256K x 36	(1) 256K x 36	(1) 4M x 36	NONE
20MB	(1) 1M x 36	(1) 4M x 36	NONE	NONE
24MB	(1) 1M x 36	(1) 1M x 36	(1) 4M x 36	NONE
32MB	(1) 4M x 36	(1) 4M x 36	NONE	NONE
36MB	(1) 1M x 36	(1) 4M x 36	(1) 4M x 36	NONE
40MB	(1) 1M x 36	(1) 1M x 36	(1) 4M x 36	(1) 4M x 36
48MB	(1) 4M x 36	(1) 4M x 36	(1) 4M x 36	NONE
64MB	(1) 4M x 36	(1) 4M x 36	(1) 4M x 36	(1) 4M x 36

Continued on next page . . .

MICRONICS COMPUTERS, INC.

JX30G VL-BUS

... continued from previous page

CACHE CONFIGURATION				
Size	Bank 0	Bank 1	TAG/U34	TAG/U61
64KB	(4) 8K x 8	(4) 8K x 8	(1) 8K x 8	(1) 8K x 8
128KB	(4) 32K x 8	NONE	(1) 32K x 8	(1) 32K x 8
256KB	(4) 32K x 8	(4) 32K x 8	(1) 32K x 8	(1) 32K x 8

Note: If Write-Through caching is not being used, the chip at U61 is not installed.

CACHE JUMPER CONFIGURATION					
Size	W10	W11	W22	W23	W24
64KB	1 & 2	1 & 2	2 & 3	2 & 3	1 & 2
128KB	1 & 2	2 & 3	1 & 2	1 & 2	2 & 3
256KB	2 & 3	2 & 3	2 & 3	2 & 3	2 & 3

Note: Pins designated should be in the closed position.

CACHING METHOD CONFIGURATION			
Method	Size	W16	W17
Write-Through	All	Open	Open
Write-Back	64KB	pins 1 & 2 closed	pins 1 & 2 closed
Write-Back	128KB	pins 1 & 2 closed	pins 2 & 3 closed
Write-Back	256KB	pins 2 & 3 closed	pins 2 & 3 closed

CPU TYPE CONFIGURATION	
Type	W12
80486SX	pins 1 & 2 closed
80486DX	pins 2 & 3 closed
804896DX2	pins 2 & 3 closed
Pentium Overdrive	pins 2 & 3 closed

CPU PQFP CONFIGURATION	
PQFP	W13
Enabled	pins 1 & 2 closed
Disabled	pins 2 & 3 closed

CPU SPEED CONFIGURATION		
Speed	SW1/switch 1	SW1/switch 2
25MHz	Off	On
33MHz	On	On
50i MHz	Off	On
66i MHz	On	On