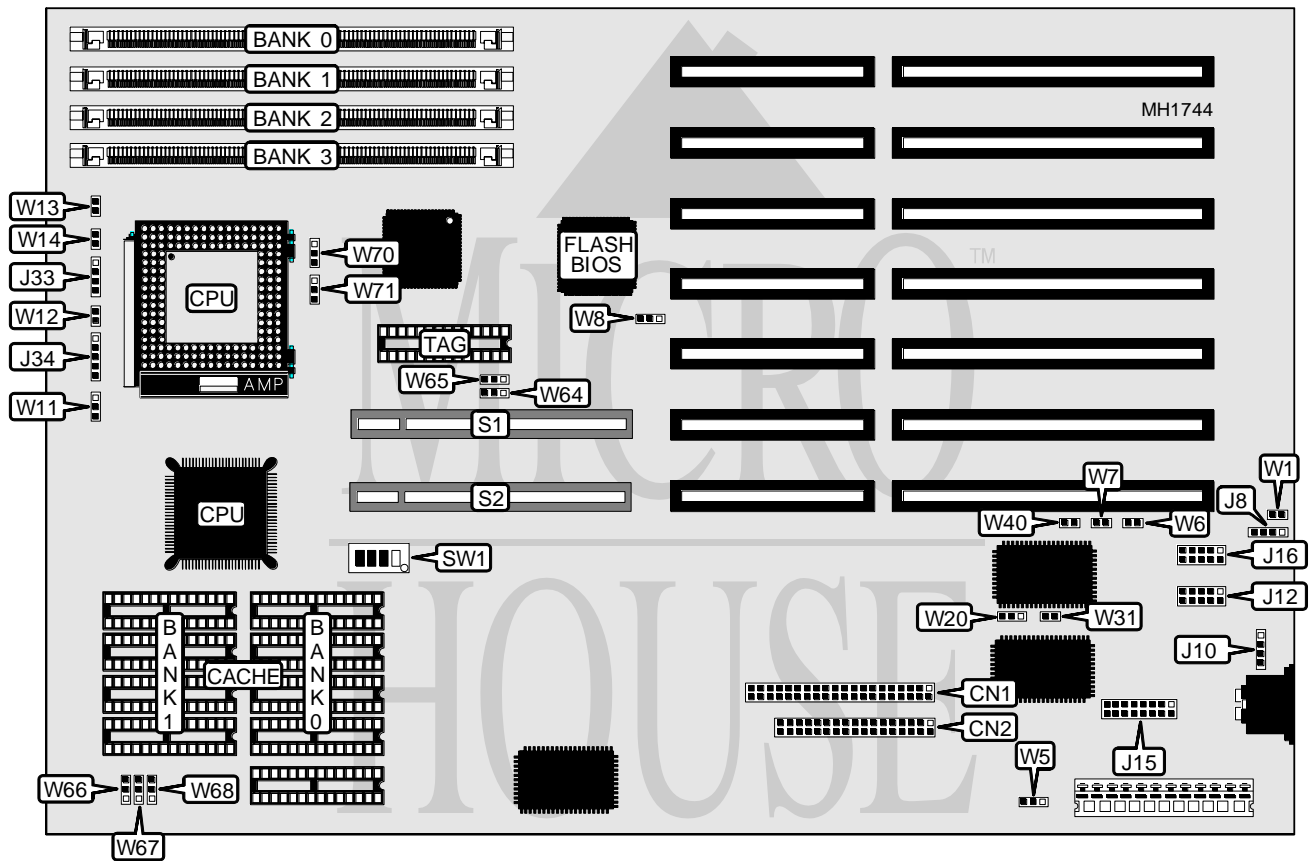


MICRONICS COMPUTERS, INC.

JX30 VL-BUS

Processor	80486SX/80486DX/ODP486SX/80486DX2/Pentium Overdrive
Processor Speed	25/33/50(internal)/66(internal)MHz
Chip Set	Micronics
Max. Onboard DRAM	64MB
Cache	64/128/256KB
BIOS	Phoenix
Dimensions	330mm x 218mm
I/O Options	32-bit VESA local bus slots (2), floppy drive interface, IDE interface, parallel port, serial ports (2)
NPU Options	None



CONNECTIONS			
Purpose	Location	Purpose	Location
IDE interface	CN1	Power LED & keylock	J34
Floppy drive interface	CN2	32-bit VESA Local bus slot	S1
External battery	J8	32-bit VESA Local bus slot	S2
External keyboard connector	J10	Hard drive LED	W11
Serial port (COM1)	J12	Reset switch	W12
Parallel port	J15	Turbo LED	W13
Serial port (COM2)	J16	Turbo switch	W14
Speaker	J33		

Continued on next page . . .

MICRONICS COMPUTERS, INC.

JX30 VL-BUS

... continued from previous page

USER CONFIGURABLE SETTINGS		
Function	Jumper/Switch	Position
í Factory configured - do not alter	SW1/switch 2	On
í Factory configured - do not alter	SW1/switch 3	Off
í Factory configured - do not alter	SW1/switch 4	Off
í Parallel port unidirectional (for printer)	W5	pins 1 & 2 closed
Parallel port bi-directional	W5	pins 2 & 3 closed
í Monitor type select color	W6	Closed
Monitor type select monochrome	W6	Open
í Factory configured - do not alter	W7	Open
í CMOS memory normal operation	W8	pins 2 & 3 closed
CMOS memory clear	W8	pins 1 & 2 closed
í Factory configured - do not alter	W20	pins 1 & 2 closed
DALLAS Real Time Clock memory clear	W31	Closed
Real Time Clock normal operation	W31	Open
í Local bus Bus-Mastering peripherals enabled	W40	Open
Local bus Bus-Mastering peripherals disabled	W40	Closed

REAL TIME CLOCK CONFIGURATION	
Real Time Clock	W1
DALLAS Real Time Clock	Closed
MOTOROLA 146818	Open

DRAM CONFIGURATION				
Size	Bank 0	Bank 1	Bank 2	Bank 3
1MB	(1) 256K x 36	NONE	NONE	NONE
2MB	(1) 256K x 36	(1) 256K x 36	NONE	NONE
4MB	(1) 1M x 36	NONE	NONE	NONE
6MB	(1) 256K x 36	(1) 256K x 36	(1) 1M x 36	NONE
8MB	(1) 1M x 36	(1) 1M x 36	NONE	NONE
10MB	(1) 256K x 36	(1) 256K x 36	(1) 1M x 36	(1) 1M x 36
12MB	(1) 1M x 36	(1) 1M x 36	(1) 1M x 36	NONE
16MB	(1) 1M x 36	(1) 1M x 36	(1) 1M x 36	(1) 1M x 36
16MB	(1) 4M x 36	NONE	NONE	NONE
18MB	(1) 256K x 36	(1) 256K x 36	(1) 4M x 36	NONE
20MB	(1) 1M x 36	(1) 4M x 36	NONE	NONE
24MB	(1) 1M x 36	(1) 1M x 36	(1) 4M x 36	NONE
32MB	(1) 4M x 36	(1) 4M x 36	NONE	NONE
36MB	(1) 1M x 36	(1) 4M x 36	(1) 4M x 36	NONE
40MB	(1) 1M x 36	(1) 1M x 36	(1) 4M x 36	(1) 4M x 36
48MB	(1) 4M x 36	(1) 4M x 36	(1) 4M x 36	NONE
64MB	(1) 4M x 36	(1) 4M x 36	(1) 4M x 36	(1) 4M x 36

Continued on next page . . .

MICRONICS COMPUTERS, INC.

JX30 VL-BUS

... continued from previous page

CACHE CONFIGURATION			
Size	Bank 0	Bank 1	TAG
64KB	(4) 8K x 8	(4) 8K x 8	(1) 8K x 8
128KB	(4) 32K x 8	NONE	(1) 8K x 8
256KB	(4) 32K x 8	(4) 32K x 8	(1) 32K x 8

CACHE JUMPER CONFIGURATION					
Size	W64	W65	W66	W67	W68
64KB	pins 1 & 2	pins 1 & 2	pins 2 & 3	pins 2 & 3	pins 1 & 2
128KB	pins 2 & 3	pins 1 & 2	pins 1 & 2	pins 1 & 2	pins 2 & 3
256KB	pins 2 & 3	pins 2 & 3	pins 2 & 3	pins 2 & 3	pins 2 & 3

Note: Pins designated should be in the closed position.

CPU TYPE CONFIGURATION		
Type	W70	W71
80486SX	pins 1 & 2 closed	N/A
80486DX	pins 2 & 3 closed	pins 2 & 3 closed
ODP486SX	N/A	pins 1 & 2 closed
80486DX2	pins 2 & 3 closed	pins 2 & 3 closed
Pentium Overdrive	pins 2 & 3 closed	pins 2 & 3 closed

CPU SPEED CONFIGURATION	
Speed	SW1/switch 1
25MHz	On
33MHz	Off
50i MHz	On
66i MHz	Off