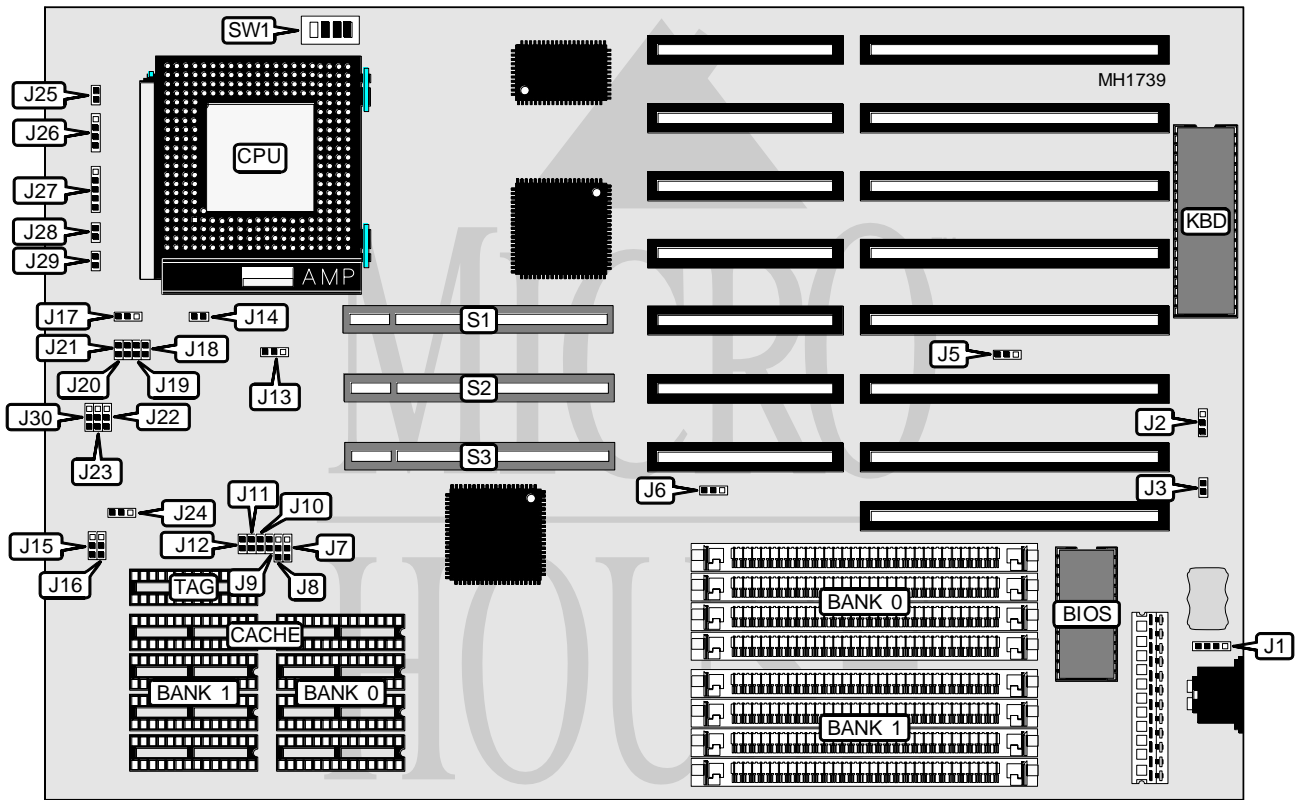


# EFA CORPORATION 4 M 5 0 H L 3

<b>Processor</b>	CX486SX/80486SX/CX486DX/80486DX/80486DX2/ODP486SX
<b>Processor Speed</b>	20/25/33/40/50(internal)/50/66(internal)MHz
<b>Chip Set</b>	UMC
<b>Max. Onboard DRAM</b>	32MB
<b>Cache</b>	64/128/256KB
<b>BIOS</b>	AMI
<b>Dimensions</b>	330mm x 218mm
<b>I/O Options</b>	32-bit VESA local bus slots (3)
<b>NPU Options</b>	None



CONNECTIONS			
Purpose	Location	Purpose	Location
External battery	J1	Turbo switch	J29
Turbo LED	J25	32-bit VESA Local bus slot	S1
Speaker	J26	32-bit VESA Local bus slot	S2
Power LED & keylock	J27	32-bit VESA Local bus slot	S3
Reset switch	J28		

Continued on next page . . .

# EFA CORPORATION

## 4 M 5 0 H L 3

... continued from previous page

USER CONFIGURABLE SETTINGS		
Function	Jumper	Position
í CMOS memory normal operation	J2	pins 1 & 2 closed
CMOS memory clear	J2	pins 2 & 3 closed
í On board battery enabled	J3	pins 1 & 2 closed
On board battery disabled	J3	pins 2 & 3 closed
í Western Digital HDD (WDAC2340) not installed	J5	pins 1 & 2 closed
Western Digital HDD (WDAC2340) installed	J5	pins 2 & 3 closed

DRAM CONFIGURATION		
Size	Bank 0	Bank 3
1MB	(4) 256K x 9	NONE
2MB	(4) 256K x 9	(4) 256K x 9
4MB	(4) 1M x 9	NONE
5MB	(4) 256K x 9	(4) 1M x 9
8MB	(4) 1M x 9	(4) 1M x 9
16MB	(4) 4M x 9	NONE
20MB	(4) 1M x 9	(4) 4M x 9
32MB	(4) 4M x 9	(4) 4M x 9

CACHE CONFIGURATION			
Size	Bank 0	Bank 1	TAG
64KB	(4) 8K x 8	(4) 8K x 8	(1) 8K x 8
128KB	(4) 32K x 8	NONE	(1) 8K x 8
256KB	(4) 32K x 8	(4) 32K x 8	(1) 32K x 8

CACHE JUMPER CONFIGURATION								
Size	J7	J8	J9	J10	J11	J12	J15	J16
64KB	Open	2 & 3	Open	Open	Open	Open	1 & 2	1 & 2
128KB	2 & 3	1 & 2	Closed	Open	Closed	Open	1 & 2	2 & 3
256KB	1 & 2	2 & 3	Closed	Closed	Closed	Closed	2 & 3	2 & 3

Note: Pins designated should be in the closed position.

Continued on next page . . .

# EFA CORPORATION

## 4 M 5 0 H L 3

... continued from previous page

CPU SPEED CONFIGURATION					
Speed	J20	SW1/switch 1	SW1/switch 2	SW1/switch 3	SW1/switch 4
20MHz	Closed	Off	Off	On	Off
25MHz	Open	On	On	Off	On
33MHz	Open	On	Off	On	On
40MHz	Open	Off	Off	On	Off
50i MHz	Open	On	On	Off	On
50MHz	Open	Off	Off	Off	Off
66i MHz	Open	On	Off	On	On

CPU TYPE CONFIGURATION									
Type	J13	J14	J17	J18	J19	J20	J21	J24	J30
80486SX	1 & 2	Open	Open	Open	Open	N/A	Closed	1 & 2	2 & 3
CX486SX	2 & 3	Closed	1 & 2	Open	Open	Open	Closed	1 & 2	2 & 3
80486DX	1 & 2	Open	1 & 2	Closed	Closed	N/A	Open	1 & 2	2 & 3
CX486SX	2 & 3	Closed	1 & 2	Closed	Closed	Open	Open	1 & 2	2 & 3
ODP486SX	1 & 2	Open	1 & 2	Closed	Closed	N/A	Open	1 & 2	2 & 3
80486DX2	1 & 2	Open	1 & 2	Closed	Closed	N/A	Open	1 & 2	2 & 3

Note: Pins designated should be in the closed position.

VESA WAIT STATE/BUS SPEED CONFIGURATION				
CPU speed	Wait states	J6	J22	J23
≤ 33MHz	0 wait states	pins 1 & 2 closed	pins 1 & 2 closed	pins 1 & 2 closed
> 33MHz	1 wait state	pins 2 & 3 closed	pins 2 & 3 closed	pins 2 & 3 closed