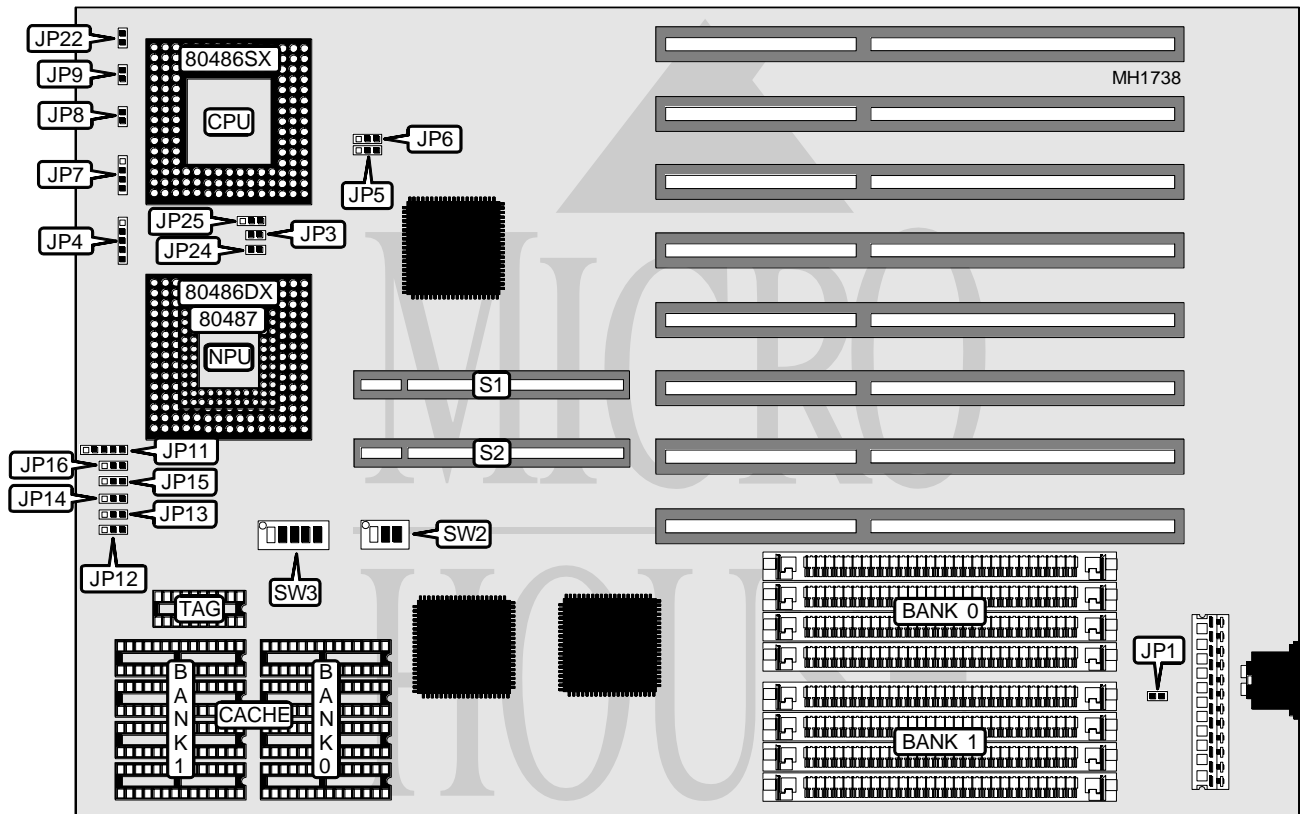


EFA CORPORATION 486FL2

Processor	80486SX/ODP486SX/80486DX/80487SX/ODP486DX/80486DX2
Processor Speed	16/20/25/33/50(internal)/50/66(internal)MHz
Chip Set	SIS
Max. Onboard DRAM	32MB
Cache	64/128/256KB
BIOS	AMI
Dimensions	330mm x 218mm
I/O Options	32-bit VESA local bus slots (2)
NPU Options	None



CONNECTIONS			
Purpose	Location	Purpose	Location
Power LED & keylock	JP4	Turbo switch	JP9
Speaker	JP7	Turbo LED	JP22
Reset switch	JP8	32-bit VESA Local bus slots	S1 & S2

Continued on next page . . .

EFA CORPORATION

486 FLE2

... continued from previous page

USER CONFIGURABLE SETTINGS		
Function	Jumper	Position
Monitor type select color	JP1	Closed
Monitor type select monochrome	JP1	Open
í Factory configured - do not alter	JP5	pins 1 & 2 closed
í Factory configured - do not alter	JP6	pins 1 & 2 closed
í Factory configured - do not alter	JP21	Closed

Note: The exact locations of JP1 & JP21 are unknown.

DRAM CONFIGURATION		
Size	Bank 0	Bank 1
1MB	(4) 256K x 9	NONE
2MB	(4) 256K x 9	(4) 256K x 9
2MB	(4) 512K x 9	NONE
4MB	(4) 1M x 9	NONE
4MB	(4) 512K x 9	(4) 512K x 9
8MB	(4) 1M x 9	(4) 1M x 9
8MB	(4) 2M x 9	NONE
16MB	(4) 4M x 9	NONE
16MB	(4) 2M x 9	(4) 2M x 9
18MB	(4) 512K x 9	(4) 4M x 9
20MB	(4) 1M x 9	(4) 4M x 9
32MB	(4) 4M x 9	(4) 4M x 9

CACHE JUMPER CONFIGURATION						
Size	JP11	JP12	JP13	JP14	JP15	JP16
64KB	pins 2 & 3	pins 1 & 2	pins 1 & 2	pins 1 & 2	pins 1 & 2	pins 1 & 2
128KB	pins 1 & 2	pins 2 & 3	pins 1 & 2	pins 2 & 3	pins 1 & 2	pins 2 & 3
256KB	pins 4 & 5	pins 2 & 3	pins 2 & 3	pins 2 & 3	pins 2 & 3	pins 2 & 3

Note: Pins designated should be in the closed position.

CACHE CONFIGURATION			
Size	Bank 0	Bank 1	TAG
64KB	(4) 8K x 8	(4) 8K x 8	(1) 8K x 4
128KB	(4) 32K x 8	NONE	(1) 8K x 4
128KB	(4) 32K x 8	NONE	(1) 32K x 8
256KB	(4) 32K x 8	(4) 32K x 8	(1) 32K x 8

Continued on next page ...

EFA CORPORATION

486FL2

... continued from previous page

CPU SPEED CONFIGURATION			
Speed	SW2/switch 1	SW2/switch 2	SW2/switch 3
16MHz	On	Off	On
20MHz	Off	Off	On
25MHz	On	On	Off
33MHz	Off	On	Off
50i MHz	On	On	Off
50MHz	Off	Off	Off
66i MHz	Off	On	Off

CPU TYPE CONFIGURATION								
Type	JP3	JP24	JP25	SW3/1	SW3/2	SW3/3	SW3/4	SW3/5
80486SX	N/A	N/A	N/A	Off	Off	Off	On	Off
80486SX (PQFP)	Open	Open	1 & 2	N/A	N/A	N/A	N/A	N/A
ODP486SX	N/A	N/A	N/A	On	Off	On	Off	On
80486DX	N/A	N/A	N/A	On	On	Off	Off	On
80486DX (PQFP)	Closed	Closed	N/A	N/A	N/A	N/A	N/A	N/A
ODP486DX	N/A	N/A	N/A	On	Off	On	Off	On
80486DX2	N/A	N/A	N/A	On	On	Off	Off	On

Note: Pins designated should be in the closed position.