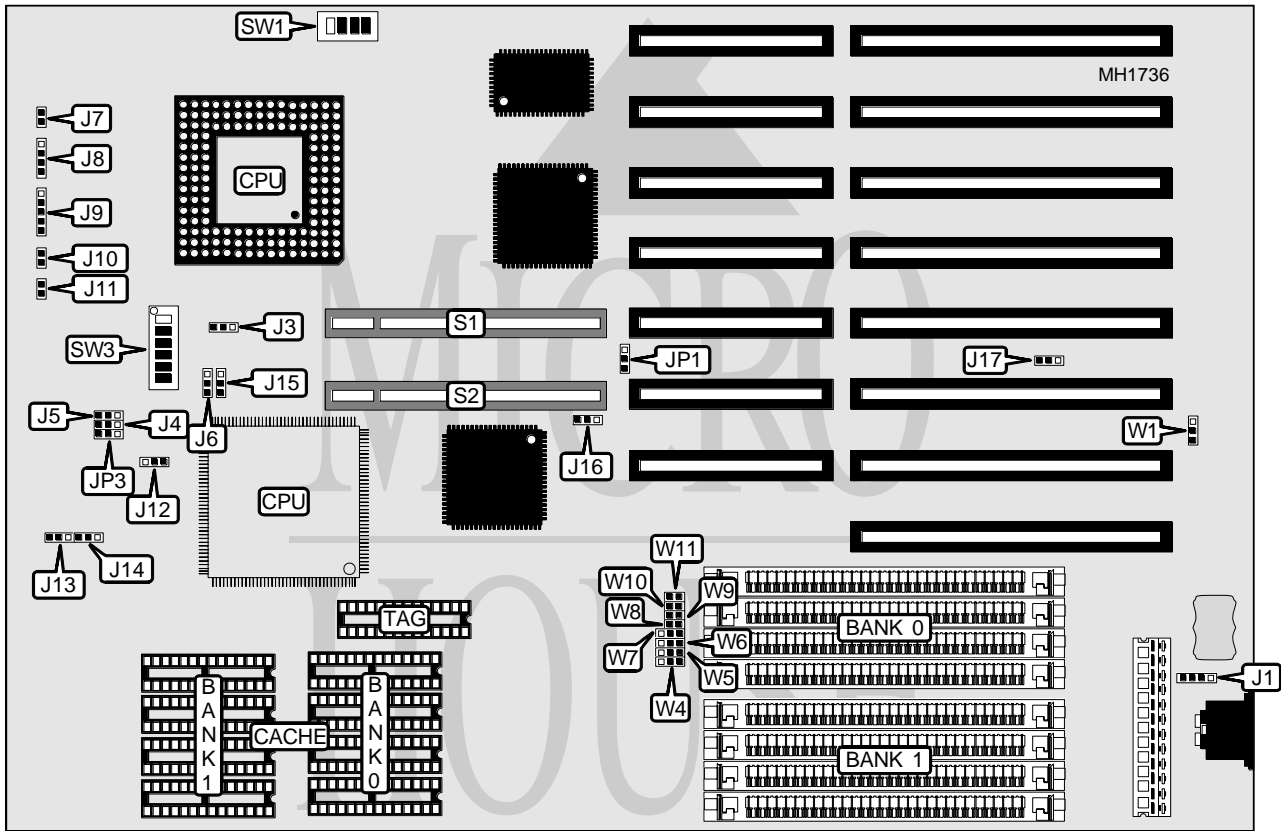


# EFA CORPORATION 4 M 5 0 H L 2 S

|                          |   |
|--------------------------|---|
| <b>Processor</b>         | 80486SX/80486DX/80486DX2/Pentium Overdrive  |
| <b>Processor Speed</b>   | 20/25/33/40/50(internal)/50/66(internal)MHz |
| <b>Chip Set</b>          | UMC   |
| <b>Max. Onboard DRAM</b> | 32MB  |
| <b>Cache</b>             | 64/128/256KB                                |
| <b>BIOS</b>              | AMI   |
| <b>Dimensions</b>        | 330mm x 218mm                               |
| <b>I/O Options</b>       | 32-bit VESA local bus slots (2)             |
| <b>NPU Options</b>       | None  |



| CONNECTIONS         |          |                            |          |
|---------------------|----------|----------------------------|----------|
| Purpose             | Location | Purpose                    | Location |
| External battery    | J1       | Reset switch               | J10      |
| Turbo LED           | J7       | 32-bit VESA Local bus slot | S1       |
| Speaker             | J8       | 32-bit VESA Local bus slot | S2       |
| Power LED & keylock | J9       |                            |          |

Continued on next page . . .

# EFA CORPORATION

## 4 M 5 0 H L 2 S

... continued from previous page

| USER CONFIGURABLE SETTINGS                 |        |                   |
|--|--------|-------------------|
| Function                                   | Jumper | Position          |
| í Factory configured - do not alter        | J3     | N/A               |
| í Speed set Turbo                          | J11    | Open              |
| Speed normal                               | J11    | Closed            |
| í CPU type package PGA                     | J12    | pins 2 & 3 closed |
| CPU type package PQFP                      | J12    | pins 1 & 2 closed |
| í Factory configured - do not alter        | J13    | pins 2 & 3 closed |
| í Western Digital HDD WDAC2340 installed   | J17    | pins 2 & 3 closed |
| Western Digital HDD WDAC2340 not installed | J17    | pins 1 & 2 closed |
| í CMOS memory normal operation             | W1     | pins 1 & 2 closed |
| CMOS memory clear                          | W1     | pins 2 & 3 closed |
| í On board battery enabled                 | W2     | Closed            |
| On board battery disabled                  | W2     | Open              |

Note: The exact location of W2 is unknown.

| DRAM CONFIGURATION |              |              |
|--------------------|--------------|--------------|
| Size               | Bank 0       | Bank 1       |
| 1MB                | (4) 256K x 9 | NONE         |
| 2MB                | (4) 256K x 9 | (4) 256K x 9 |
| 4MB                | (4) 1M x 9   | NONE         |
| 5MB                | (4) 256K x 9 | (4) 1M x 9   |
| 8MB                | (4) 1M x 9   | (4) 1M x 9   |
| 16MB               | (4) 4M x 9   | NONE         |
| 20MB               | (4) 1M x 9   | (4) 4M x 9   |
| 32MB               | (4) 4M x 9   | (4) 4M x 9   |

| CACHE CONFIGURATION |             |             |         |
|---------------------|-------------|-------------|---------|
| Size                | Bank 0      | Bank 1      | TAG     |
| 64KB                | (4) 8K x 8  | (4) 8K x 8  | 8K x 8  |
| 128KB               | (4) 32K x 8 | NONE        | 8K x 8  |
| 256KB               | (4) 32K x 8 | (4) 32K x 8 | 32K x 8 |

| CACHE JUMPER CONFIGURATION |       |       |       |       |        |        |        |        |
|----------------------------|-------|-------|-------|-------|--------|--------|--------|--------|
| Size                       | W4    | W5    | W6    | W7    | W8     | W9     | W10    | W11    |
| 64KB                       | 1 & 2 | 1 & 2 | 1 & 2 | Open  | Open   | Open   | Open   | Open   |
| 128KB                      | 2 & 3 | 1 & 2 | 2 & 3 | 1 & 2 | Open   | Closed | Open   | Closed |
| 256KB                      | 2 & 3 | 2 & 3 | 1 & 2 | 2 & 3 | Closed | Closed | Closed | Closed |

Note: Pins designated should be in the closed position.

Continued on next page . . .

# EFA CORPORATION

## 4 M 5 0 H L 2 S

... continued from previous page

| CPU TYPE CONFIGURATION |       |       |       |       |       |       |
|------------------------|-------|-------|-------|-------|-------|-------|
| Type                   | SW3/1 | SW3/2 | SW3/3 | SW3/4 | SW3/5 | SW3/6 |
| 80486SX/20             | Off   | Off   | Off   | On    | On    | Off   |
| 80486SX/25             | Off   | Off   | Off   | Off   | On    | Off   |
| 80486SX/33             | Off   | Off   | Off   | Off   | On    | Off   |
| 80486DX                | Off   | On    | On    | Off   | Off   | Off   |
| Pentium Overdrive      | Off   | On    | On    | Off   | Off   | Off   |

| CPU TYPE CONFIGURATION |            |            |            |            |            |            |
|------------------------|------------|------------|------------|------------|------------|------------|
| Type                   | J6         | J13        | J14        | J15        | JP1        | JP3        |
| 80486SX                | pins 2 & 3 | pins 2 & 3 | pins 1 & 2 | pins 2 & 3 | pins 1 & 2 | pins 2 & 3 |
| 80486DX                | pins 2 & 3 | pins 2 & 3 | pins 1 & 2 | pins 2 & 3 | pins 1 & 2 | pins 2 & 3 |
| 80486DX2               | pins 2 & 3 | pins 2 & 3 | pins 1 & 2 | pins 2 & 3 | pins 1 & 2 | pins 2 & 3 |
| ODP486SX               | pins 2 & 3 | pins 2 & 3 | pins 1 & 2 | pins 2 & 3 | pins 1 & 2 | pins 2 & 3 |

Note: Pins designated should be in the closed position.

| CPU SPEED CONFIGURATION |       |       |       |       |
|-------------------------|-------|-------|-------|-------|
| Speed                   | SW1/1 | SW1/2 | SW1/3 | SW1/4 |
| 20MHz                   | Off   | Off   | On    | Off   |
| 25MHz                   | On    | On    | Off   | On    |
| 33MHz                   | On    | Off   | On    | On    |
| 40MHz                   | Off   | Off   | On    | Off   |
| 50i MHz                 | On    | On    | Off   | On    |
| 50MHz                   | Off   | Off   | Off   | Off   |
| 66i MHz                 | On    | Off   | On    | On    |

| VESA WAIT STATE/BUS SPEED CONFIGURATION |               |                   |                   |                   |
|---|---------------|-------------------|-------------------|-------------------|
| CPU speed                               | Wait states   | J4                | J5                | J16               |
| ≤ 33MHz                                 | 0 wait states | pins 1 & 2 closed | pins 1 & 2 closed | pins 1 & 2 closed |
| > 33MHz                                 | 1 wait state  | pins 2 & 3 closed | pins 2 & 3 closed | pins 2 & 3 closed |