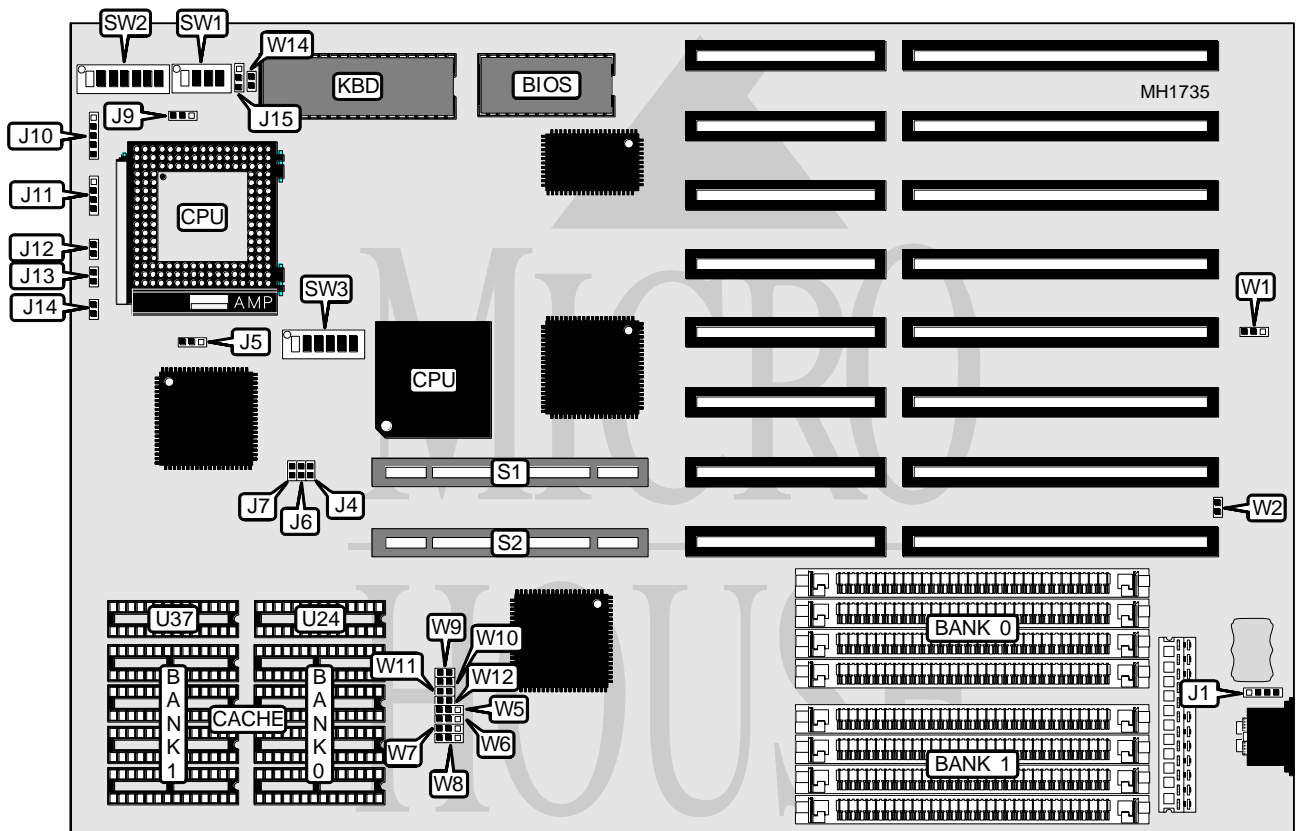


EFA CORPORATION

ECA 34M50FL

Processor 80386DX/CX486DLC/80486SX/80486DX/80486DX2
Processor Speed 16/20/25/33/40/50(internal)/50/66(internal)MHz
Chip Set UMC
Max. Onboard DRAM 32MB
Cache 64/128/256KB
BIOS AMI
Dimensions 330mm x 218mm
I/O Options 32-bit VESA local bus slots (2)
NPU Options 80387DX



CONNECTIONS			
Purpose	Location	Purpose	Location
External battery	J1	Turbo Switch	J13
Power LED & keylock	J10	Turbo LED	J14
Speaker	J11	Chassis fan power	J15
Reset switch	J12	32-bit VESA Local bus slots	S1 & S2

Continued on next page . . .

EFA CORPORATION

E C A - 3 4 M 5 0 F L

... continued from previous page

USER CONFIGURABLE SETTINGS		
Function	Jumper	Position
í CMOS memory normal operation	W1	pins 1 & 2 closed
CMOS memory clear	W1	pins 2 & 3 closed
í On board battery enabled	W2	pins 1 & 2 closed
On board battery disabled	W2	pins 2 & 3 closed
í Factory configured - do not alter	W14	Open

DRAM CONFIGURATION		
Size	Bank 0	Bank 1
1MB	(4) 256K x 9	NONE
2MB	(4) 256K x 9	(4) 256K x 9
4MB	(4) 1M x 9	NONE
5MB	(4) 256K x 9	(4) 1M x 9
8MB	(4) 1M x 9	(4) 1M x 9
16MB	(4) 4M x 9	NONE
20MB	(4) 1M x 9	(4) 4M x 9
32MB	(4) 4M x 9	(4) 4M x 9

CACHE CONFIGURATION				
Size	Bank 0	Bank 1	TAG/U24	Dirty Bit/U37
64KB	(4) 8K x 8	(4) 8K x 8	(1) 8K x 8	(1) 16K x 8
128KB	(4) 32K x 8	NONE	(1) 8K x 8	(1) 16K x 8
256KB	(4) 32K x 8	(4) 32K x 8	(1) 32K x 8	(1) 16K x 8

CACHE JUMPER CONFIGURATION								
Size	W5	W6	W7	W8	W9	W10	W11	W12
64KB	1 & 2	1 & 2	1 & 2	Open	Open	Open	Open	Open
128KB	2 & 3	1 & 2	2 & 3	1 & 2	Open	Closed	Open	Closed
256KB	2 & 3	2 & 3	1 & 2	2 & 3	Closed	Closed	Closed	Closed

Note: Pins designated should be in the closed position.

CPU TYPE CONFIGURATION						
Type	SW3/1	SW3/2	SW3/3	SW3/4	SW3/5	SW3/6
CX486DLC	Off	On	On	Off	Off	Off
80486SX/20	Off	Off	Off	On	On	Off
80486SX/25	Off	Off	Off	Off	On	Off
80486SX (PQFP)	Off	Off	Off	Off	Off	Off
80486DX	Off	On	On	Off	Off	Off
80486DX (PQFP)	On	Off	Off	Off	Off	On
ODP486SX	Off	On	On	Off	Off	Off
80486DX2	Off	On	On	Off	Off	Off

Continued on next page ...

EFA CORPORATION

E C A - 3 4 M 5 0 F L

... continued from previous page

CPU TYPE CONFIGURATION (CONT.)		
Type	Pins	J9
80486SX	168	pins 1 & 2 closed
80486SX/80486DX2	168 Overdrive	pins 1 & 2 closed
80486DX	168 Overdrive	pins 2 & 3 closed
80486DX	169 Overdrive	pins 1 & 2 closed
80486DX/80486DX2	168	pins 2 & 3 closed

CPU TYPE CONFIGURATION (CONT.)						
Type	SW2/1	SW2/2	SW2/3	SW2/4	SW2/5	SW2/6
80386	On	On	On	On	On	On
80486	Off	Off	Off	Off	Off	Off

NPU TYPE CONFIGURATION	
Type	SW2/switch 7
80387DX enabled	On
80387DX disabled	Off

CPU TYPE CONFIGURATION (CONT.)	
Type	J5
80486SX	pins 2 & 3 closed
80486DX	pins 2 & 3 closed
ODP486SX	pins 1 & 2 closed
80486DX2	pins 2 & 3 closed

Note: This only applies when the 80486SX/DX PQFP is disabled.

CPU SPEED CONFIGURATION						
CPU	Speed	Osc.	SW1/1	SW1/2	SW1/3	SW1/4
80386DX	16MHz	16MHz	On	On	On	On
80386DX	16MHz	16MHz	On	On	Off	Off
80386DX	20MHz	20MHz	On	On	On	Off
80386DX	33MHz	33MHz	On	Off	On	On
80386DX	40MHz	80MHz	On	Off	Off	Off
80486SX	20MHz	40MHz	Off	Off	On	Off
80486SX	25MHz	25MHz	On	On	Off	On
80487SX	20MHz	40MHz	Off	Off	On	Off
80487SX	25MHz	25MHz	On	On	Off	On
80486DX	25MHz	25MHz	On	On	Off	On
80486DX	33MHz	33MHz	On	Off	On	On
80486DX	50MHz	50MHz	Off	Off	Off	Off
ODP486SX	50i MHz	25MHz	On	On	Off	On
ODP486SX	66i MHz	33MHz	On	Off	On	On
80486DX2	50i MHz	25MHz	On	On	Off	On
80486DX2	66i MHz	33MHz	On	Off	On	On

Continued on next page ...

EFA CORPORATION
E C A - 3 4 M 5 0 F L*... continued from previous page*

VESA WAIT STATE/BUS SPEED CONFIGURATION				
CPU speed	Wait states	J4	J6	J7
Auto detect	Auto select	Closed	Open	Closed
≤ 33MHz	0 wait states	Closed	Closed	Open
> 33MHz	1 wait state	Open	Closed	Closed