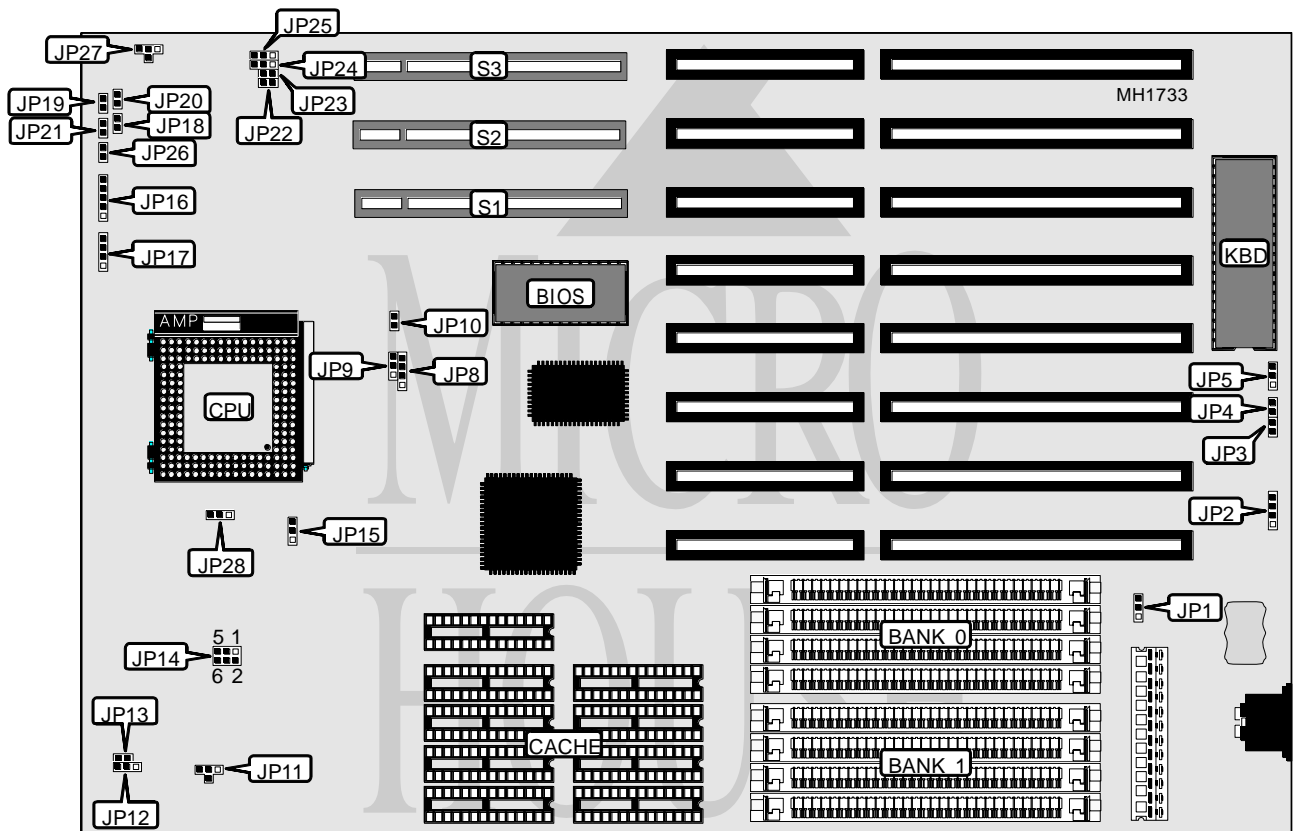


LION COMPUTERS, INC. NICE GREEN-VL/ISA

Processor	80486SX/80487SX/80486DX/80486DX2/Pentium Overdrive
Processor Speed	25/33/40/50(internal)/50/66(internal)MHz
Chip Set	C & T
Max. Onboard DRAM	128MB
Cache	128/256/512KB
BIOS	AMI
Dimensions	330mm x 218mm
I/O Options	32-bit VESA local bus slots (3)
NPU Options	None



CONNECTIONS			
Purpose	Location	Purpose	Location
External battery	JP2	Turbo switch	JP19
Green PC power connector	JP3	Green PC switch	JP20
Power LED & keylock	JP16	Turbo LED	JP21
Speaker	JP17	Reset switch	JP26
Green PC LED	JP18	32-bit VESA local bus slots	S1, S2 & S3

Continued on next page . . .

LION COMPUTERS, INC.
NICE GREEN-VL/ISA

... continued from previous page

USER CONFIGURABLE SETTINGS		
Function	Jumper	Position
í CMOS memory normal operation	JP1	pins 1 & 2 closed
CMOS memory clear	JP1	pins 2 & 3 closed
í Monitor type select color	JP4	Closed
Monitor type select monochrome	JP4	Open
í Flash BIOS write protect enabled	JP5	pins 1 & 2 closed
Flash BIOS write protect disabled	JP5	pins 2 & 3 closed
í CPU manufacturer type - Intel	JP15	pins 1 & 2 closed
CPU manufacturer type - Cyrix	JP15	pins 2 & 3 closed
í Factory configured - do not alter	JP24	N/A
í Factory configured - do not alter	JP25	N/A

DRAM CONFIGURATION		
Size	Bank 0	Bank 1
1MB	(4) 1M x 9	NONE
2MB	(4) 1M x 9	(4) 1M x 9
4MB	(4) 4M x 9	NONE
8MB	(4) 4M x 9	(4) 4M x 9
16MB	(4) 16M x 9	NONE
20MB	(4) 4M x 9	(4) 16M x 9
32MB	(4) 16M x 9	(4) 16M x 9
64MB	(4) 64M x 9	NONE
128MB	(4) 64M x 9	(4) 64M x 9

CACHE CONFIGURATION			
Size	Bank 0	Bank 1	TAG
256KB	(4) 32K x 8	(4) 32K x 8	(1) 32K x 8
512KB	(4) 128K x 8	NONE	(1) 128K x 8
1MB	(4) 128K x 8	(4) 128K x 8	(1) 128K x 8

CACHE JUMPER CONFIGURATION		
Size	JP11	JP12
256KB	pins 1 & 2 closed	pins 1 & 2 closed
512KB	pins 2 & 3 closed	pins 2 & 3 closed
1MB	pins 2 & 4 closed	pins 2 & 3 closed

CPU TYPE CONFIGURATION			
Type	JP8	JP9	JP10
80486SX	pins 2 & 3 closed	Open	Open
80487SX	pins 1 & 2, 3 & 4 closed	Open	Open
80486DX	pins 1 & 2, 3 & 4 closed	pins 2 & 3 closed	Open
80486DX2	pins 1 & 2, 3 & 4 closed	pins 2 & 3 closed	Open
Pentium Overdrive	pins 1 & 2, 3 & 4 closed	pins 1 & 2 closed	Closed

Continued on next page . . .

LION COMPUTERS, INC.

NICE GREEN-VL/ISA

... continued from previous page

CPU SPEED CONFIGURATION				
Speed	JP13	JP14	JP27	JP28
25MHz	Closed	pins 1 & 2 closed	pins 2 & 4 closed	pins 2 & 3 closed
33MHz	Open	pins 1 & 2, 5 & 6	pins 2 & 4 closed	pins 2 & 3 closed
40MHz	Open	pins 1 & 2, 3 & 4	pins 1 & 2 closed	pins 1 & 2 closed
50MHz	Closed	pins 1 & 2 closed	pins 2 & 4 closed	pins 2 & 3 closed
50MHz	Open	1 & 2, 3 & 4, 5 & 6	pins 1 & 2 closed	pins 1 & 2 closed
66MHz	Open	pins 1 & 2, 5 & 6	pins 2 & 4 closed	pins 2 & 3 closed

Note: Pins designated should be in the closed position.

VESA WAIT STATE/BUS SPEED (ID2 & ID3) CONFIGURATION			
CPU speed	Wait states	JP22 (ID3)	JP23 (ID2)
≤ 33MHz	0 wait states	Closed	Open
> 33MHz	1 wait state	Open	Closed