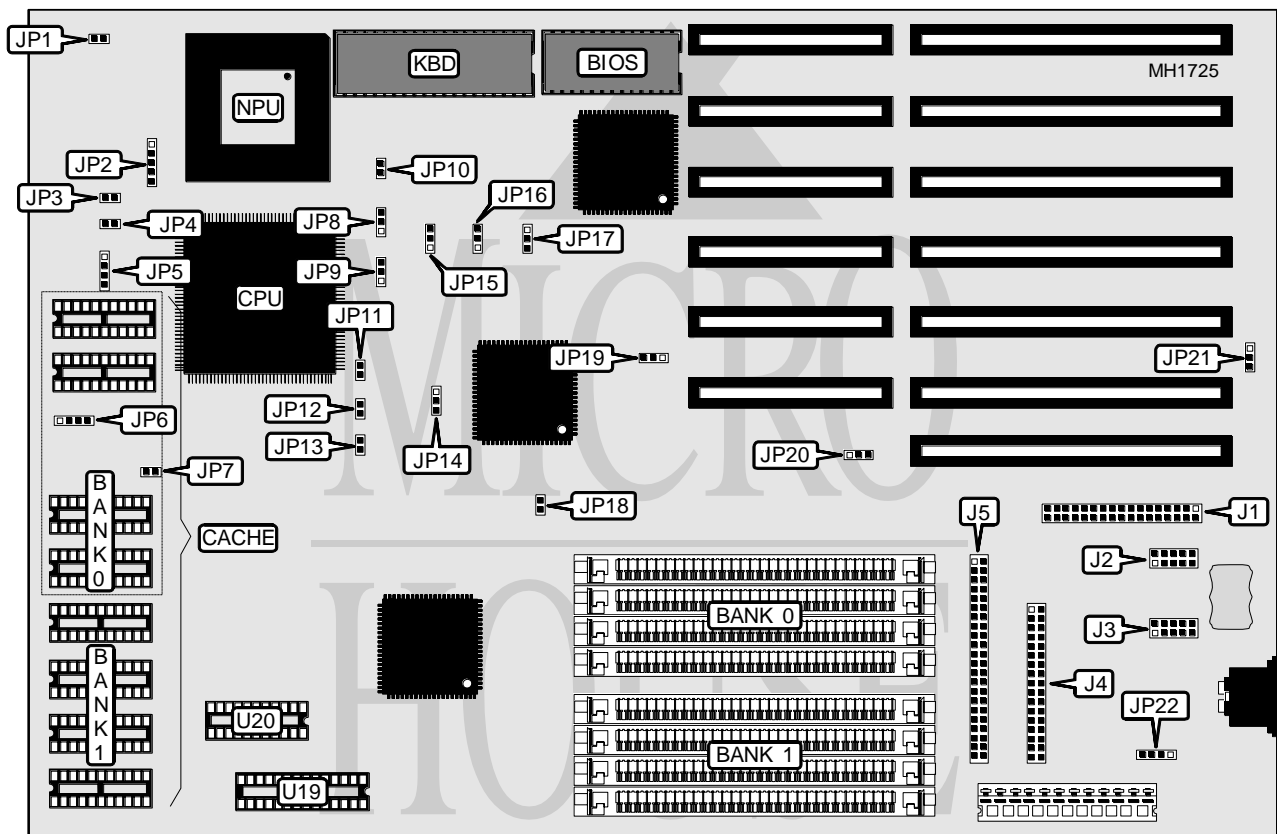


# AST RESEARCH, INC. ADVANTAGE! PLUS SYSTEM BOARD (202529-001,2,3,4)

<b>Processor</b>	80486SX/80487SX/80486DX/80486DX2
<b>Processor Speed</b>	25/33/50(internal)/66(internal)MHz
<b>Chip Set</b>	VLSI
<b>Max. Onboard DRAM</b>	32MB
<b>Cache</b>	64/256KB
<b>BIOS</b>	AST
<b>Dimensions</b>	330mm x 218mm
<b>I/O Options</b>	Floppy drive interface, IDE interface, parallel port, serial ports (2)
<b>NPU Options</b>	4167



CONNECTIONS			
Purpose	Location	Purpose	Location
Parallel port	J1	Turbo LED	JP3
Serial port 2	J2	Reset switch	JP4
Serial port 1	J3	Speaker	JP5
Floppy drive interface	J4	Hard drive LED	JP6
IDE interface	J5	External battery	JP22
Power LED & keylock	JP2		

Continued on next page . . .

**AST RESEARCH, INC.**  
**ADVANTAGE! PLUS SYSTEM BOARD**  
**(202529-001,2,3,4)**

... continued from previous page

USER CONFIGURABLE SETTINGS		
Function	Jumper	Position
í Monitor type select color	JP1	Closed
Monitor type select monochrome	JP1	Open
í I/O bus speed select ATCLK disabled	JP18	Open
I/O bus speed select ATCLK enabled	JP18	Closed
í IRQ7 select enabled	JP19	pins 2 & 3 closed
IRQ5 select enabled	JP19	pins 1 & 2 closed
í I/O port enabled	JP20	pins 1 & 2 closed
I/O port disabled	JP20	pins 2 & 3 closed
í CMOS memory normal operation (Internal Battery)	JP21	pins 2 & 3 closed
CMOS memory normal operation (External Battery)	JP21	Open
CMOS memory clear	JP21	pins 1 & 2 closed

DRAM CONFIGURATION		
Size	Bank 0	Bank 1
1MB	(4) 256K x 9	NONE
2MB	(4) 256K x 9	(4) 256K x 9
4MB	(4) 1M x 9	NONE
5MB	(4) 1M x 9	(4) 256K x 9
8MB	(4) 1M x 9	(4) 1M x 9
16MB	(4) 4M x 9	NONE
20MB	(4) 4M x 9	(4) 1M x 9
32MB	(4) 4M x 9	(4) 4M x 9

CACHE CONFIGURATION				
Size	Bank 0	Bank 1	TAG/U19	TAG/U20
64KB	(4) 8K x 8	(4) 8K x 8	(1) 8K x 8	NONE
256KB	(4) 32 x 8	(4) 32 x 8	(1) 32 x 8	(1) 64 x 1

CACHE CONFIGURATION				
Size	JP7	JP11	JP12	JP13
64KB	Open	Open	Open	Open
256KB	Closed	Closed	Open	Closed

Continued on next page ...

AST RESEARCH, INC.  
 ADVANTAGE! PLUS SYSTEM BOARD  
 (202529-001,2,3,4)

... continued from previous page

CPU TYPE CONFIGURATION			
Type	JP8	JP9	JP10
80486SX	Open	pins 2 & 3 closed	Open
80487SX	pins 2 & 3 closed	pins 1 & 2 closed	Closed
80486DX	pins 1 & 2 closed	pins 1 & 2 closed	Closed
80486DX2	pins 1 & 2 closed	pins 1 & 2 closed	Closed

CPU SPEED CONFIGURATION				
Speed	JP14	JP15	JP16	JP17
25MHz	pins 2 & 3 closed	pins 2 & 3 closed	pins 1 & 2 closed	pins 2 & 3 closed
33MHz	pins 2 & 3 closed	pins 1 & 2 closed	pins 1 & 2 closed	pins 2 & 3 closed
50I MHz	pins 2 & 3 closed	pins 2 & 3 closed	pins 1 & 2 closed	pins 2 & 3 closed
66I MHz	pins 2 & 3 closed	pins 1 & 2 closed	pins 1 & 2 closed	pins 2 & 3 closed