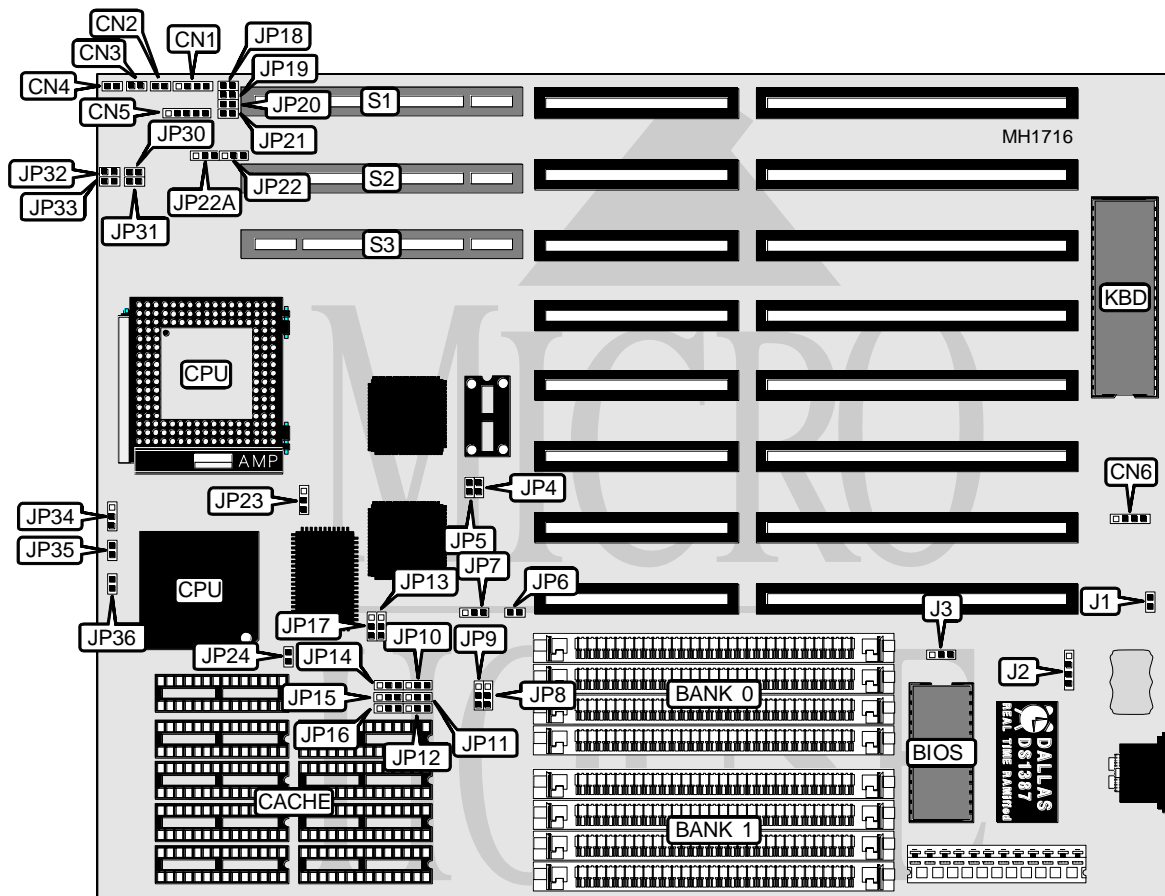


# YOUNG MICRO SYSTEMS, INC.

## VS3486F-3VL

<b>Processor</b>	80386DX/CX486DLC/80486SX/80486DX/80486DX2/ODP586SX
<b>Processor Speed</b>	25/33/40/50(internal)/66(internal)MHz
<b>Chip Set</b>	Symphony
<b>Max. Onboard DRAM</b>	64MB
<b>Cache</b>	64/256/1024KB
<b>BIOS</b>	AMI
<b>Dimensions</b>	230mm x 218mm
<b>I/O Options</b>	32-bit VESA local bus slots (3)
<b>NPU Options</b>	None



CONNECTIONS			
Purpose	Location	Purpose	Location
Speaker	CN1	External battery	CN6
Turbo LED	CN2	32-bit VESA Local bus slot	S1
Turbo switch	CN3	32-bit VESA Local bus slot	S2
Reset switch	CN4	32-bit VESA Local bus slot	S3
Power LED & keylock	CN5		

Continued on next page . . .

**YOUNG MICRO SYSTEMS, INC.**  
**VS3486F-3VL**

... continued from previous page

USER CONFIGURABLE SETTINGS		
Function	Jumper	Position
í Internal battery support enabled	J1	Closed
Internal battery support enabled	J1	Open
í Factory configured - do not alter	J2	Unknown
í Factory configured - do not alter	J3	Unknown

DRAM CONFIGURATION		
Size	Bank 0	Bank 1
1MB	(4) 256K x 9	NONE
2MB	(4) 256K x 9	(4) 256K x 9
4MB	(4) 1M x 9	NONE
5MB	(4) 1M x 9	(4) 256K x 9
8MB	(4) 1M x 9	(4) 1M x 9
16MB	(4) 4M x 9	NONE
17MB	(4) 4M x 9	(4) 256K x 9
20MB	(4) 1M x 9	(4) 4M x 9
32MB	(4) 4M x 9	(4) 4M x 9
64MB	(4) 16M x 9	NONE

CACHE JUMPER CONFIGURATION					
Size	JP10	JP11	JP12	JP15	JP16
64KB	pins 1 & 2	pins 1 & 2	pins 1 & 2	pins 1 & 2	pins 1 & 2
256KB	pins 2 & 3	pins 2 & 3	pins 2 & 3	pins 1 & 2	pins 1 & 2
1024KB	pins 2 & 3	pins 2 & 3	pins 2 & 3	pins 2 & 3	pins 2 & 3

Note: Pins designated should be in the closed position.

CPU TYPE CONFIGURATION								
Type	JP4	JP5	JP6	JP7	JP8	JP9	JP13	JP14
80386DX/25	Open	Closed	Open	1 & 2	2 & 3	1 & 2	1 & 2	2 & 3
80386DX/33	Closed	Open	Open	1 & 2	2 & 3	1 & 2	1 & 2	2 & 3
80386DX/40	Open	Open	Open	1 & 2	2 & 3	1 & 2	1 & 2	2 & 3
80486SX/25	Open	Closed	Closed	2 & 3	1 & 2	2 & 3	2 & 3	1 & 2
80486SX/33	Closed	Open	Closed	2 & 3	1 & 2	2 & 3	2 & 3	1 & 2
80486DX/25	Open	Closed	Closed	2 & 3	1 & 2	2 & 3	2 & 3	1 & 2
80486DX/33	Closed	Open	Closed	2 & 3	1 & 2	2 & 3	2 & 3	1 & 2
80486DX/50	Open	Closed	Closed	2 & 3	1 & 2	2 & 3	2 & 3	1 & 2
80486DX2/50i	Open	Closed	Closed	2 & 3	1 & 2	2 & 3	2 & 3	1 & 2
80486DX2/66i	Closed	Open	Closed	2 & 3	1 & 2	2 & 3	2 & 3	1 & 2

Note: Pins designated should be in the closed position.

Continued on next page ...

# YOUNG MICRO SYSTEMS, INC.

## VS3486F-3VL

... continued from previous page

CPU TYPE CONFIGURATION								
Type	JP17	JP18	JP19	JP20	JP21	JP22	JP22A	JP23
80386DX/25	1 & 2	Closed	Closed	Closed	Open	1 & 2	2 & 3	2 & 3
80386DX/33	1 & 2	Closed	Closed	Closed	Open	1 & 2	2 & 3	2 & 3
80386DX/40	1 & 2	Open	Closed	Closed	Open	1 & 2	2 & 3	2 & 3
80486SX/25	2 & 3	Closed	Closed	Open	Closed	1 & 2	2 & 3	2 & 3
80486SX/33	2 & 3	Closed	Closed	Open	Closed	1 & 2	2 & 3	2 & 3
80486DX/25	2 & 3	Closed	Closed	Open	Closed	1 & 2	2 & 3	2 & 3
80486DX/33	2 & 3	Closed	Closed	Open	Closed	1 & 2	2 & 3	2 & 3
80486DX/50	2 & 3	Open	Closed	Open	Closed	2 & 3	1 & 2	1 & 2
80486DX2/50i	2 & 3	Closed	Closed	Open	Closed	1 & 2	2 & 3	2 & 3
80486DX2/66i	2 & 3	Closed	Closed	Open	Closed	1 & 2	2 & 3	2 & 3

Note: Pins designated should be in the closed position.

CPU TYPE CONFIGURATION								
Type	JP24	JP30	JP31	JP32	JP33	JP34	JP35	JP36
80386DX/25	Closed	Closed	Open	Open	Open	1 & 2	Closed	Closed
80386DX/33	Closed	Closed	Open	Open	Open	1 & 2	Closed	Closed
80386DX/40	Closed	Closed	Open	Closed	Open	1 & 2	Closed	Closed
80486SX/25	Open	Closed	Open	Open	Open	1 & 2	Closed	Closed
80486SX/33	Open	Closed	Open	Open	Open	1 & 2	Closed	Closed
80486DX/25	Open	Closed	Open	Open	Open	1 & 2	Closed	Closed
80486DX/33	Open	Closed	Open	Open	Open	1 & 2	Closed	Closed
80486DX/50	Open	Closed	Open	Closed	Closed	1 & 2	Closed	Closed
80486DX2/50i	Open	Closed	Open	Open	Open	1 & 2	Closed	Closed
80486DX2/66i	Open	Closed	Open	Open	Open	1 & 2	Closed	Closed

Note: Pins designated should be in the closed position.