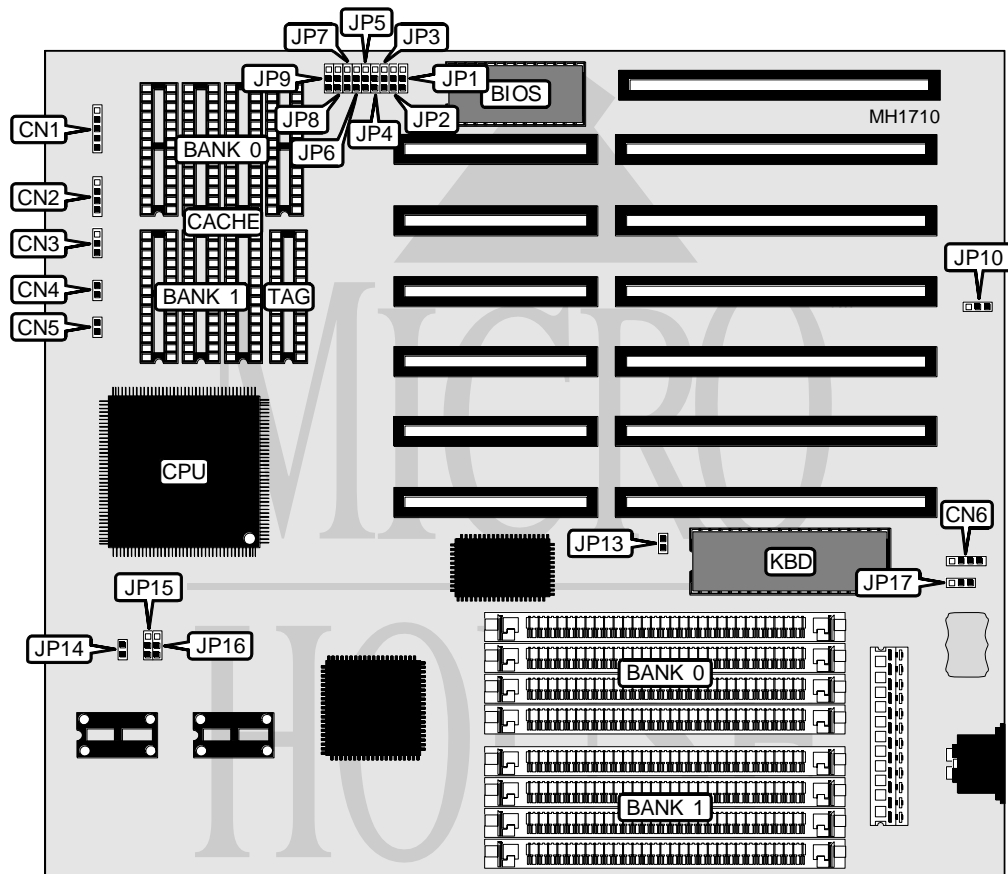


MICROMEDIA TECHNOLOGIES, INC.

486 - S

Processor	80486SX/80486DX/80486DX2
Processor Speed	20/25/33/50(internal)MHz
Chip Set	SIS
Max. Onboard DRAM	32MB
Cache	32/64/128/256KB
BIOS	AMI
Dimensions	230mm x 218mm
I/O Options	None
NPU Options	None



CONNECTIONS			
Purpose	Location	Purpose	Location
Power LED & keylock	CN1	Turbo LED	CN4
Speaker	CN2	Reset switch	CN5
Turbo switch	CN3	External battery	CN6

Continued on next page . . .

MICROMEDIA TECHNOLOGIES, INC.

486 - S

... continued from previous page

USER CONFIGURABLE SETTINGS		
Function	Jumper	Position
í CMOS memory normal operation	JP10	pins 1 & 2 closed
CMOS memory clear	JP10	pins 2 & 3 closed
í Monitor type select color	JP13	Closed
Monitor type select monochrome	JP13	Open
í Power good signal detect from board	JP17	pins 1 & 2 closed
Power good signal detect from power supply	JP17	pins 2 & 3 closed

DRAM CONFIGURATION		
Size	Bank 0	Bank 1
1MB	(4) 256K x 9	NONE
2MB	(4) 256K x 9	(4) 256K x 9
4MB	(4) 1M x 9	NONE
8MB	(4) 1M x 9	(4) 1M x 9
16MB	(4) 4M x 9	NONE
20MB	(4) 1M x 9	(4) 4M x 9
32MB	(4) 4M x 9	(4) 4M x 9

CACHE CONFIGURATION			
Size	Bank 0	Bank 1	TAG
32KB	(4) 8K x 8	NONE	(1) 8K x 8
64KB	(4) 8K x 8	(4) 8K x 8	(1) 8K x 8
128KB	(4) 32K x 8	NONE	(1) 32K x 8
256KB	(4) 32K x 8	(4) 32K x 8	(1) 32K x 8

CACHE JUMPER CONFIGURATION									
Size	JP1	JP2	JP3	JP4	JP5	JP6	JP7	JP8	JP9
32KB	1 & 2	1 & 2	1 & 2	1 & 2	1 & 2	1 & 2	1 & 2	1 & 2	1 & 2
64KB	1 & 2	1 & 2	2 & 3	2 & 3	1 & 2	1 & 2	1 & 2	2 & 3	2 & 3
128KB	2 & 3	1 & 2	2 & 3	2 & 3	2 & 3	1 & 2	2 & 3	1 & 2	1 & 2
256KB	2 & 3	2 & 3	2 & 3	2 & 3	2 & 3	2 & 3	2 & 3	2 & 3	2 & 3

Note: Pins designated should be in the closed position.

CPU TYPE CONFIGURATION			
Type	JP14	JP15	JP16
80486SX	Open	pins 2 & 3 closed	pins 2 & 3 closed
80487SX	Closed	pins 1 & 2 closed	pins 2 & 3 closed
80486DX	Closed	pins 1 & 2 closed	pins 1 & 2 closed