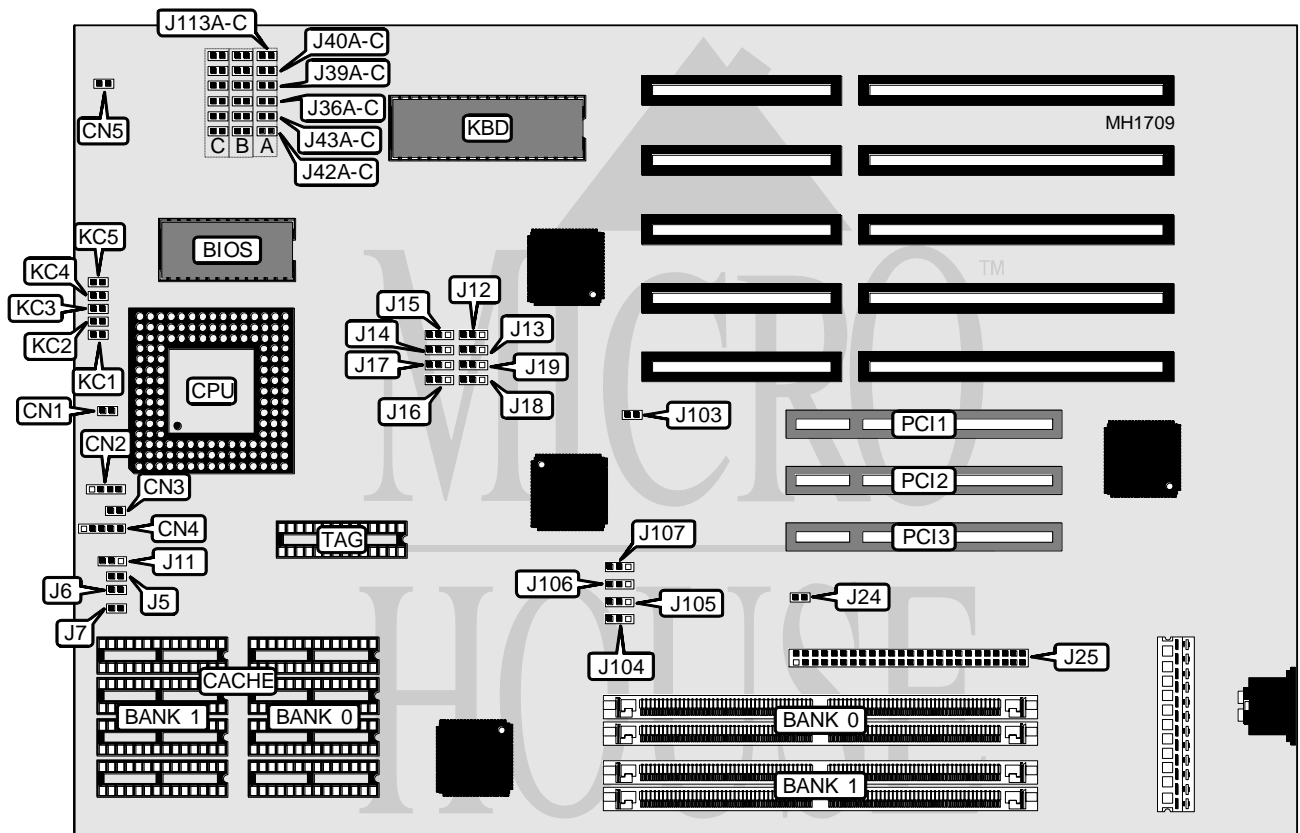


MICROMEDIA TECHNOLOGIES, INC.

PCI 486

Processor	80486SX/80486DX/80486DX2/Pentium Overdrive
Processor Speed	25/33/50(internal)/66(internal)MHz
Chip Set	Intel
Max. Onboard DRAM	128MB
Cache	64/128/256/512KB
BIOS	Phoenix
Dimensions	330mm x 218mm
I/O Options	PCI local bus slots (3)
NPU Options	None



CONNECTIONS			
Purpose	Location	Purpose	Location
Hard drive LED	CN1	SCSI connector	J25
Speaker	CN2	PCI local bus	PCI1
Reset switch	CN3	PCI local bus	PCI2
Power LED & keylock	CN4	PCI local bus	PCI3

Continued on next page . . .

MICROMEDIA TECHNOLOGIES, INC.

PCI 486

... continued from previous page

USER CONFIGURABLE SETTINGS		
Function	Jumper	Position
í CMOS memory normal operation	CN5	pins 1 & 2 closed
CMOS memory clear	CN5	pins 2 & 3 closed
í Factory configured - do not alter	J12	N/A
í SCSI interrupt select IRQ11	J14	pins 2 & 3 closed
SCSI interrupt select IRQ9	J14	pins 1 & 2 closed
í Factory configured - do not alter	J15	N/A
í Factory configured - do not alter	J16	N/A
í Cache enabled	J17	pins 2 & 3 closed
Cache disabled	J17	pins 1 & 2 closed
í SCSI terminator term power souce from system	J24	Closed
SCSI terminator term power souce from peripheral	J24	Open

CPU TYPE CONFIGURATION					
Type	KC1	KC2	KC3	KC4	KC5
80486SX	Open	Open	Open	Closed	Open
80487SX	Open	Closed	Closed	Open	Closed
80486DX	Closed	Open	Closed	Open	Closed
ODP486SX	Open	Closed	Closed	Open	Closed
80486DX2	Closed	Open	Closed	Open	Closed
Pentium Overdrive	Open	Closed	Closed	Open	Closed

CACHE JUMPER CONFIGURATION						
Size	J5	J6	J7	J11	J18	J19
64KB	Open	Open	Open	pins 2 & 3	pins 1 & 2	pins 1 & 2
128KB	Open	Closed	Open	pins 1 & 2	pins 2 & 3	pins 1 & 2
256KB	Open	Closed	Closed	pins 1 & 2	pins 1 & 2	pins 2 & 3
512KB	Closed	Closed	Closed	pins 1 & 2	pins 2 & 3	pins 2 & 3

Note: Pins designated should be in the closed position.

CPU SPEED CONFIGURATION		
Speed	J13	J103
25MHz	pins 1 & 2 closed	Open
33MHz	pins 2 & 3 closed	Closed
50i MHz	pins 1 & 2 closed	Open
66i MHz	pins 2 & 3 closed	Closed

PCI INTERRUPT SELECTION						
PCI1	J36A	J39A	J40A	J42A	J43A	J113A
IRQ3	Open	Open	Open	Open	Open	Closed
IRQ10	Open	Closed	Open	Open	Open	Open
IRQ11	Open	Open	Closed	Open	Open	Open
IRQ14	Open	Open	Open	Closed	Open	Open
IRQ15	Open	Open	Open	Open	Closed	Open
IRQ25	Closed	Open	Open	Open	Open	Open

Continued on next page ...

MICROMEDIA TECHNOLOGIES, INC.

PCI 486

PCI INTERRUPT SELECTION						
PCI2	J36B	J39B	J40B	J42B	J43B	J113B
IRQ3	Open	Open	Open	Open	Open	Closed
IRQ10	Open	Closed	Open	Open	Open	Open
IRQ11	Open	Open	Closed	Open	Open	Open
IRQ14	Open	Open	Open	Closed	Open	Open
IRQ15	Open	Open	Open	Open	Closed	Open
IRQ25	Closed	Open	Open	Open	Open	Open

PCI INTERRUPT SELECTION						
PCI3	J36C	J39C	J40C	J42C	J43C	J113C
IRQ3	Open	Open	Open	Open	Open	Closed
IRQ10	Open	Closed	Open	Open	Open	Open
IRQ11	Open	Open	Closed	Open	Open	Open
IRQ14	Open	Open	Open	Closed	Open	Open
IRQ15	Open	Open	Open	Open	Closed	Open
IRQ25	Closed	Open	Open	Open	Open	Open

LOCAL BUS MASTER SELECTION		
Master	J104	J105
iPCI 3	pins 2 & 3 closed	pins 2 & 3 closed
PCI 1	pins 1 & 2 closed	pins 1 & 2 closed

LOCAL BUS MASTER SELECTION		
Master	J106	J107
iSCSI	pins 2 & 3 closed	pins 2 & 3 closed
PCI 2	pins 1 & 2 closed	pins 1 & 2 closed

Continued on next page . . .

MICROMEDIA TECHNOLOGIES, INC.
 PCI 486

DRAM CONFIGURATION		
Size	Bank 0	Bank 1
2MB	(2) 256K x 36	NONE
4MB	(2) 256K x 36	(2) 256K x 36
4MB	(2) 512K x 36	NONE
6MB	(2) 256K x 36	(2) 512K x 36
6MB	(2) 512K x 36	(2) 256K x 36
8MB	(2) 512K x 36	(2) 512K x 36
8MB	(2) 1M x 36	NONE
10MB	(2) 256K x 36	(2) 1M x 36
10MB	(2) 1M x 36	(2) 256K x 36
12MB	(2) 512K x 36	(2) 1M x 36
12MB	(2) 1M x 36	(2) 512K x 36
16MB	(2) 1M x 36	(2) 1M x 36
16MB	(2) 2M x 36	NONE
18MB	(2) 256K x 36	(2) 2M x 36
18MB	(2) 2M x 36	(2) 256K x 36
20MB	(2) 512K x 36	(2) 2M x 36
20MB	(2) 2M x 36	(2) 512K x 36
24MB	(2) 1M x 36	(2) 2M x 36
24MB	(2) 2M x 36	(2) 1M x 36
32MB	(2) 2M x 36	(2) 2M x 36
32MB	(2) 4M x 36	NONE
34MB	(2) 256K x 36	(2) 4M x 36
34MB	(2) 4M x 36	(2) 256K x 36
36MB	(2) 512K x 36	(2) 4M x 36
36MB	(2) 4M x 36	(2) 512K x 36
40MB	(2) 1M x 36	(2) 4M x 36
40MB	(2) 4M x 36	(2) 1M x 36
48MB	(2) 2M x 36	(2) 4M x 36
48MB	(2) 4M x 36	(2) 2M x 36
64MB	(2) 4M x 36	(2) 4M x 36
64MB	(2) 8M x 36	NONE
66MB	(2) 256K x 36	(2) 8M x 36
66MB	(2) 8M x 36	(2) 256K x 36
68MB	(2) 512K x 36	(2) 8M x 36
68MB	(2) 8M x 36	(2) 512K x 36
72MB	(2) 1M x 36	(2) 8M x 36
72MB	(2) 8M x 36	(2) 1M x 36
80MB	(2) 2M x 36	(2) 8M x 36
80MB	(2) 8M x 36	(2) 2M x 36
96MB	(2) 4M x 36	(2) 8M x 36
96MB	(2) 8M x 36	(2) 4M x 36
128MB	(2) 8M x 36	(2) 8M x 36