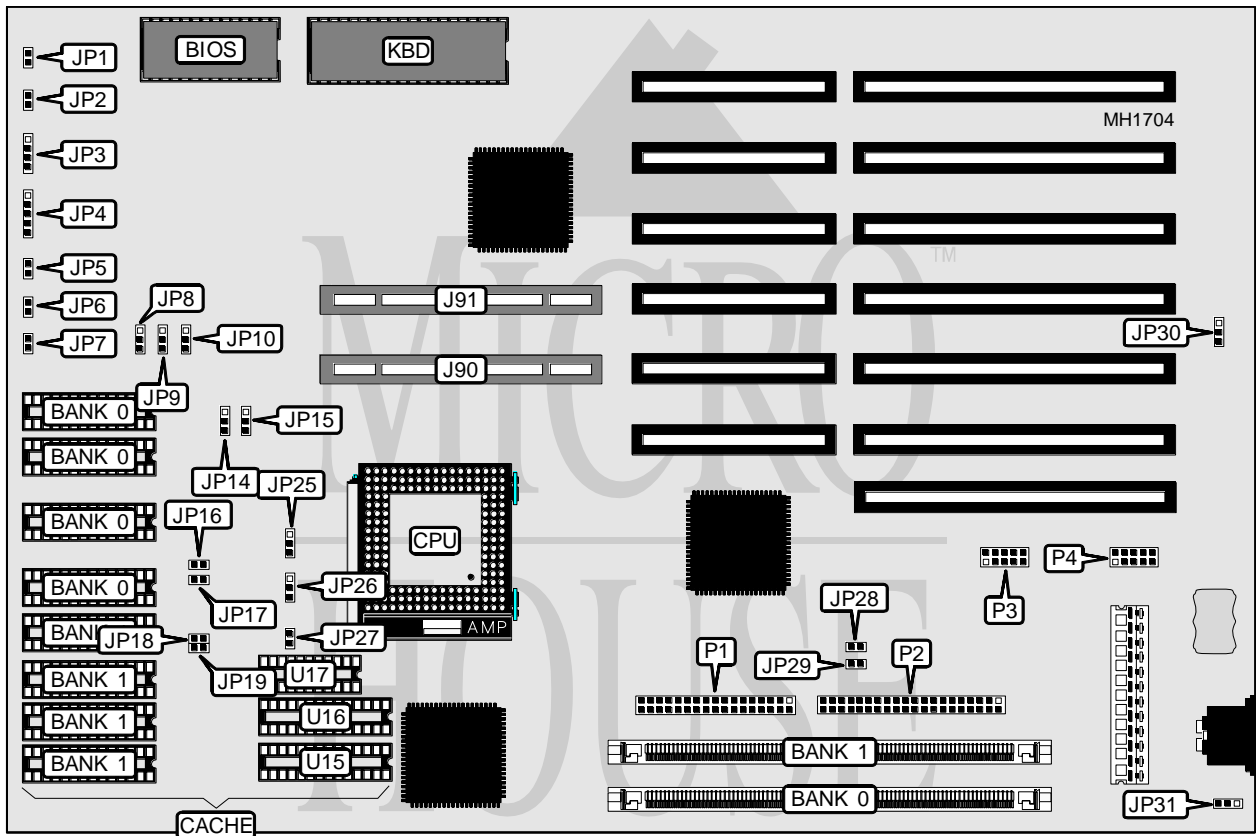


# MYLEX CORPORATION MVI486 & MVI486LC

<b>Processor</b>	80486SX/80487SX/80486DX
<b>Processor Speed</b>	20/25/33MHz
<b>Chip Set</b>	OPTI
<b>Max. Onboard DRAM</b>	32MB
<b>Cache</b>	64/128/256KB
<b>BIOS</b>	MYLEX
<b>Dimensions</b>	330mm x 218mm
<b>I/O Options</b>	32-bit VESA local bus slots (2), floppy drive interface, IDE interface, parallel port, serial ports (2)
<b>NPU Options</b>	None



CONNECTIONS			
Purpose	Location	Purpose	Location
32-bit VESA Local bus slot	J90	IDE interface LED	JP7
32-bit VESA Local bus slot	J91	External battery	JP31
Reset switch	JP2	Floppy drive interface	P1
Speaker	JP3	IDE port	P2
Power LED & keylock	JP4	Serial port 2	P3
Turbo LED	JP5	Serial port 1	P4
Turbo switch	JP6		

Continued on next page . . .

# MYLEX CORPORATION

## MVI486 & MVI486LC

... continued from previous page

USER CONFIGURABLE SETTINGS		
Function	Jumper	Position
í Monitor type select monochrome	JP1	Open
Monitor type select color	JP1	Closed
í CMOS memory clear	JP30	pins 1 & 2 closed
CMOS memory normal operation (External battery)	JP30	Open
CMOS memory normal operation (Internal battery)	JP30	pins 2 & 3 closed

DRAM CONFIGURATION		
Size	Bank 0	Bank 1
1MB	(1) 256K x 36	NONE
4MB	(1) 1M x 36	NONE
5MB	(1) 1M x 36	(1) 256K x 36
6MB	(1) 1M x 36	(1) 512K x 36
8MB	(1) 1M x 36	(1) 1M x 36
10MB	(1) 2M x 36	(1) 512K x 36
12MB	(1) 2M x 36	(1) 1M x 36
16MB	(1) 4M x 36	NONE
18MB	(1) 4M x 36	(1) 512K x 36
20MB	(1) 4M x 36	(1) 1M x 36
32MB	(1) 4M x 36	(1) 4M x 36
40MB	(1) 4M x 36	(1) 2M x 36
48MB	(1) 8M x 36	(1) 4M x 36
64MB	(1) 8M x 36	(1) 8M x 36

CACHE CONFIGURATION					
Size	Bank 0	Bank 1	TAG/U15	TAG/U16	TAG/U17
64KB	(4) 8K x 8	(4) 8K x 8	NONE	(1) 8K x 8	(1) 64K x 8
128KB	(4) 32K x 8	NONE	NONE	(1) 8K x 8	(1) 64K x 8
256KB	(4) 32K x 8	(4) 32K x 8	(1) 8K x 8	(1) 8K x 8	(1) 64K x 8

CACHE JUMPER CONFIGURATION						
Size	JP14	JP15	JP16	JP17	JP18	JP19
64KB	pins 2 & 3	pins 2 & 3	Open	Open	Open	Open
128KB	pins 1 & 2	pins 1 & 2	Closed	Closed	Open	Open
256KB	pins 2 & 3	pins 2 & 3	Closed	Closed	Closed	Closed

Note: Pins designated should be in the closed position.

CPU TYPE CONFIGURATION			
Type	JP25	JP26	JP27
80486SX	Open	pins 2 & 3 closed	Open
80487SX	pins 2 & 3 closed	pins 1 & 2 closed	Closed
80486DX	pins 1 & 2 closed	pins 1 & 2 closed	Closed

Continued on next page...

# MYLEX CORPORATION

## MVI486 & MVI486LC

... continued from previous page

CPU SPEED CONFIGURATION			
Speed	JP8	JP9	JP10
20MHz	pins 2 & 3 closed	pins 1 & 2 closed	pins 1 & 2 closed
25MHz	pins 1 & 2 closed	pins 2 & 3 closed	pins 2 & 3 closed
33MHz	pins 1 & 2 closed	pins 1 & 2 closed	pins 2 & 3 closed

PARALLEL PORT OUTPUT SELECTION		
Setting	JP28	JP29
Uni-directional (printer)	Closed	Closed
Bi-directional	Open	Open