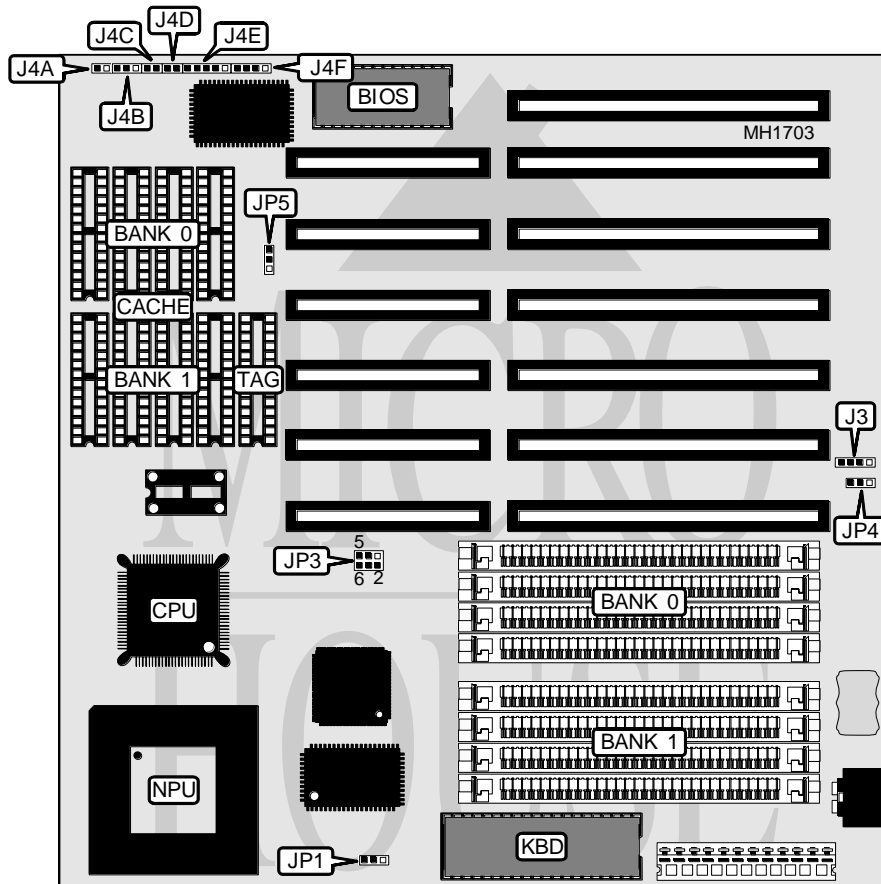


BIOSTAR MICROTECH INTERNATIONAL CORPORATION

MB-1333/40 AEQ-K/AEG-K

Processor 80386DX
Processor Speed 33/40MHz
Chip Set AMI
Max. Onboard DRAM 32MB
Cache 64/128/256KB
BIOS AMI
Dimensions 220mm x 220mm
I/O Options None
NPU Options 80387DX/CX487DLC



CONNECTIONS			
Purpose	Location	Purpose	Location
External battery	J3	Reset switch	J4D
Speaker	J4A	Turbo switch	J4E
Power LED & keylock	J4B	+5Vdc (pin 1)	J4F
Turbo LED	J4C	Ground (pin 2)	J4F

Continued on next page . . .

BIOSTAR MICROTECH INTERNATIONAL CORPORATION

MB-1333/40 AEQ-K/AEG-K

... continued from previous page

USER CONFIGURABLE SETTINGS		
Function	Jumper	Position
í Monitor type select monochrome	JP1	pins 1 & 2 closed
Monitor type select color	JP1	pins 2 & 3 closed
í CMOS memory normal operation	JP4	pins 2 & 3 closed
CMOS memory clear	JP4	pins 1 & 2 closed

DRAM CONFIGURATION		
Size	Bank 0	Bank 1
1MB	(4) 256K x 4	None
2MB	(4) 256K x 4	(4) 256K x 4
4MB	(4) 1M x 4	None
5MB	(4) 256K x 4	(4) 1M x 4
8MB	(4) 1M x 4	(4) 1M x 4
16MB	(4) 4M x 4	None
20MB	(4) 1M x 4	(4) 4M x 4
20MB	(4) 4M x 4	(4) 1M x 4
32MB	(4) 4M x 4	(4) 4M x 4

CACHE CONFIGURATION				
Size	Max Cachable	Bank 0	Bank 1	TAG
64KB	8MB	(4) 8K x 8	(4) 8K x 8	(1) 8K x 8
128KB	16MB	(4) 32K x 8	NONE	(1) 8K x 8
256KB	32MB	(4) 32K x 8	(4) 32K x 8	(1) 32K x 8

CACHE CONFIGURATION			
Size	Max Cachable	JP3	JP5
64KB	8MB	Open	pins 1 & 2 closed
128KB	16MB	pins 1 & 2 and 3 & 4 closed	pins 2 & 3 closed
256KB	32MB	pins 1 & 2, 3 & 4 and 5 & 6 closed	pins 1 & 2 closed