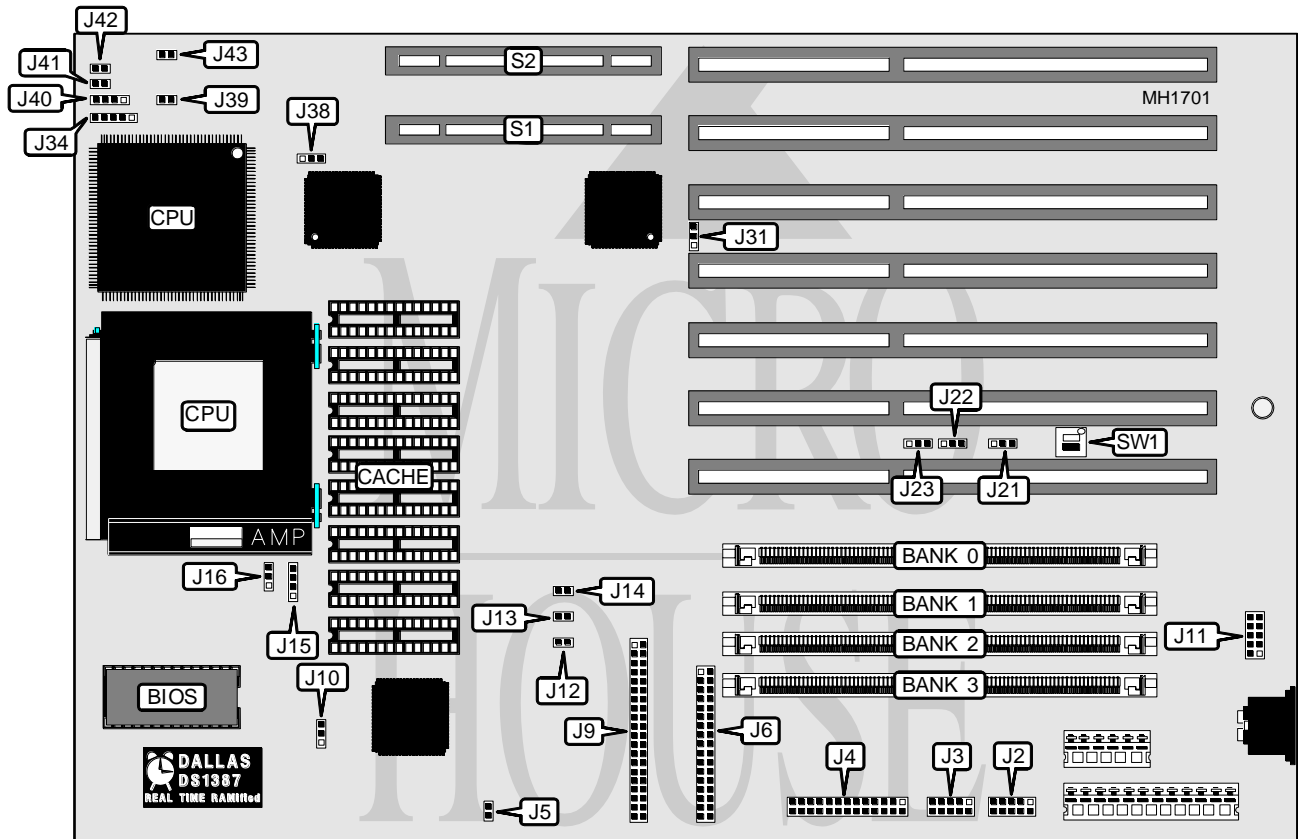


AMERICAN MEGATRENDS, INC. ENTERPRISE-IV EISA VLB

Processor	80486SX/80487SX/80486DX/ODP486SX/80486DX2/Pentium Overdrive
Processor Speed	25/33/50(internal)/50/66(internal)MHz
Chip Set	AMI
Max. Onboard DRAM	256MB
Cache	256KB
BIOS	AMI
Dimensions	330mm x 218mm
I/O Options	32-bit VESA local bus slots (2), floppy drive interface, IDE interface, parallel port, serial ports (2)
NPU Options	None



CONNECTIONS			
Purpose	Location	Purpose	Location
Serial port 1	J2	Power LED & keylock	J34
Serial port 2	J3	Turbo switch	J39
Parallel port	J4	Speaker	J40
IDE interface LED	J5	Reset switch	J41
Floppy drive interface	J6	Turbo LED	J42
IDE interface	J9	32-bit VESA Local bus slot	S1
PS/2 mouse	J11	32-bit VESA Local bus slot	S2

Continued on next page . . .

AMERICAN MEGATRENDS, INC.
ENTERPRISE-IV EISA VLB

... continued from previous page

USER CONFIGURABLE SETTINGS		
Function	Jumper/Switch	Position
í Factory configured - do not alter	J10	N/A
í Factory configured - do not alter	J21	N/A
í CPU low priority	J31	pins 1 & 2 closed
CPU high priority	J31	pins 2 & 3 closed
í Factory configured - do not alter	J38	N/A
í Factory configured - do not alter	SW1/switch 1	Off
í Monitor type select monochrome	SW1/switch 2	Off
Monitor type select color	SW1/switch 2	On

DRAM CONFIGURATION				
Size	Bank 0	Bank 1	Bank 2	Bank 3
1MB	(1) 256K x 36	None	None	None
2MB	(1) 256K x 36	(1) 256K x 36	None	None
4MB	(1) 1M x 36	None	None	None
6MB	(1) 256K x 36	(1) 256K x 36	(1) 1M x 36	None
8MB	(1) 1M x 36	(1) 1M x 36	None	None
10MB	(1) 256K x 36	(1) 256K x 36	(1) 1M x 36	(1) 1M x 36
12MB	(1) 1M x 36	(1) 1M x 36	(1) 1M x 36	None
16MB	(1) 1M x 36	(1) 1M x 36	(1) 1M x 36	(1) 1M x 36
16MB	(1) 4M x 36	None	None	None
18MB	(1) 256K x 36	(1) 256K x 36	(1) 4M x 36	None
20MB	(1) 1M x 36	(1) 4M x 36	None	None
24MB	(1) 1M x 36	(1) 1M x 36	(1) 4M x 36	None
32MB	(1) 4M x 36	(1) 4M x 36	None	None
36MB	(1) 1M x 36	(1) 4M x 36	(1) 4M x 36	None
40MB	(1) 1M x 36	(1) 1M x 36	(1) 4M x 36	(1) 4M x 36
48MB	(1) 4M x 36	(1) 4M x 36	(1) 4M x 36	None
64MB	(1) 4M x 36	(1) 4M x 36	(1) 4M x 36	(1) 4M x 36
64MB	(1) 16M x 36	None	None	None
128MB	(1) 16M x 36	(1) 16M x 36	None	None
192MB	(1) 16M x 36	(1) 16M x 36	(1) 16M x 36	None
256MB	(1) 16M x 36	(1) 16M x 36	(1) 16M x 36	(1) 16M x 36

CPU SPEED CONFIGURATION			
Speed	J12	J13	J14
25MHz	Open	Open	Open
33MHz	Open	Closed	Open
50i MHz	Open	Open	Open
50MHz	Closed	Open	Closed
66i MHz	Open	Closed	Open

Continued on next page . . .

AMERICAN MEGATRENDS, INC.

ENTERPRISE-IV EISA VLB

... continued from previous page

CPU TYPE CONFIGURATION				
PGA CPU	PQFP CPU	J15	J16	J43
None	80486SX,80486DX	N/A	N/A	Open
ODP486SX, 80487SX, ODP586SX	80486SX,80486DX	1&2, 3&4	pins 2 & 3	Closed
ODP486SX, 80487SX, ODP586SX	None	1&2, 3&4	pins 2 & 3	N/A
80486DX, 80486DX2	None	1&2, 3&4	pins 1 & 2	N/A
80486DX, 80486DX2	80486SX,80486DX	1&2, 3&4	pins 1 & 2	Closed
80486SX	None	pins 2 & 3	N/A	N/A
80486SX	80486SX,80486DX	pins 2 & 3	N/A	Closed
Note: Pins designated should be in the closed position.				

SERIAL PORT INTERRUPT SELECTION			
Port 1 (J2)	Port 2 (J3)	J22	J23
í IRQ4	í IRQ3	pins 2 & 3 closed	pins 1 & 2 closed
IRQ3	IRQ4	pins 1 & 2 closed	pins 2 & 3 closed